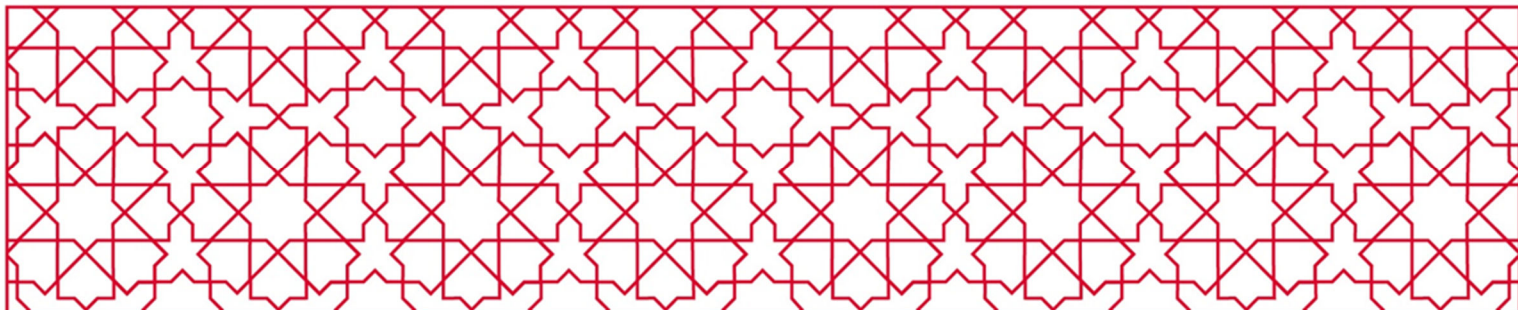


Leisa Prowse
CONSULTING

Somerset Dam Improvement Project

Community Reference Group Meeting 7

June 2026



Contents

1	Introduction	1
1.1	Workshop purpose	1
1.2	Attendees	1
1.3	Welcome	1
2	Communications update	2
3	Ministerial Infrastructure Designation (MID) update	2
4	Project site works update.....	3
5	Legacy project update.....	4
6	Group reflection	5
7	Meeting close	6
	Appendix A: Presentation.....	7

1 Introduction

The seventh meeting of the Community Reference Group (CRG) for the Somerset Dam Improvement Project (SDIP) was held on Thursday 14 May 2026. The meeting was held at the Somerset General Store between 4:00pm and 6:00pm.

1.1 Meeting purpose

The purpose of the CRG meeting was to:

- provide a communication update
- discuss the Ministerial Infrastructure Designation (MID) submission and consultation
- provide a project update
- provide a legacy projects update.

Seqwater's presentation is included at Appendix A.

1.2 Attendees

Meeting 7 was attended by eight CRG members:

- Rosemarie Allan
- Bronwyn Davies (online)
- Bebe Jecis (online)
- David Kenneally
- Gary Love (online)
- Greg Mann (online)
- Don McConnell
- Dale Sinclair.

Vicki Sweedman and Tim Mason did not attend the meeting.

The workshop was also attended by seven members of the project team, including:

- two Leisa Prowse Consulting (LPC) representatives
- five Seqwater representatives.

1.3 Welcome

Seqwater welcomed CRG members to the seventh CRG meeting for the SDIP project. The LPC facilitator briefly summarised key points from the Terms of Reference, including:

- Participation in the CRG is voluntary.
- The CRG is not a decision-making group and consensus is not required.
- The CRG aims to represent a diverse range of community viewpoints.
- Members are encouraged to represent their community or stakeholder group's views in the room.
- Members must not speak to the media on behalf of the group without Seqwater's authorisation.
- No proxies will be accepted.
- If you cannot attend a meeting, let Seqwater know that you are an apology.

The facilitator confirmed there were no outstanding actions.

2 Communications update

Seqwater provided updates on upcoming communication and engagement activities for SDIP, including the following.

- The Ministerial Infrastructure Designation (MID) consultation period is now open and will close on 22 May 2026.
- The project team outlined actions to support finalising the Detailed Business Case, including an update on the role of the Social Impact Management Plan (SIMP) and how social impact will be managed over the project lifecycle.
- The draft SDIP promotional video is in progress, and the project team shared a preview of the draft animation and project promotion video.
- The project team explained that some content in the video cannot currently be sent to the wider database however will be released externally in the coming months.
- A recreation assessment is ongoing. The project team would like to issue a survey to CRG members and their networks. Outcomes of the survey would shape the assessment report.

CRG members were invited to provide feedback on the video and commented that:

- there is a need to share more information about the saddle dam, as there has been a lot of community interest
- drone images are preferable to animated images
- a shorter video without technical information would be useful, with a link to a longer video that people can access if they are interested
- videos are more accessible and interesting than text
- the content was considered to be very good, enjoyable, and engaging.

The project team agreed that it would be useful to share information about the saddle dam as there is some misunderstanding about its purpose.

Seqwater shared an update on how social impacts will be managed, including:

- The voluntary Social Impact Management Plan (SIMP) that the CRG were working with Seqwater to develop in 2020 will change to align with the work being done on other dam improvement projects (DIP).
- The project team will develop social impact management guides or factsheets that will be available to the wider public. The aim of this format is to improve ease of access to information that is readily available, simple to understand and able to be updated as the project progresses.

The facilitator invited attendees to discuss the update. CRG members made comments relating to:

- being unable to make phone calls due to increased user base on the local telecommunications network, which is impacting the ability to run their business
- concerns about the lack of signal related to construction workers using phones, which is impacting bandwidth and overwhelming the capacity of the telecommunication tower
- capacity of volunteers and ease of sharing social impact information
- whether a dedicated SDIP Facebook page could be created.

The project team shared the following insights:

- The phone call issue will be taken on board as an action point. Seqwater does have an avenue to engage with the telecommunication companies. Feedback will be provided to CRG members, preferably before the next meeting.
- There are resourcing challenges relating to the need to increase social media posts about one project for an organisation as large as Seqwater. The project team will discuss creating shareable graphics or social media tiles to issue to CRG members along with email updates.

3 Ministerial Infrastructure Designation (MID) update

Seqwater shared an update about the MID including the following.

- The consultation period is now live.
- The nature and purpose of following the MID approval pathway.
- The proposed development outlined in the application, made up of temporary works and permanent activities.
- Technical specialists engaged to complete assessments for:
 - flora and fauna
 - bushfire hazard risk
 - cultural heritage
 - Jinibara People Aboriginal Corporation consultation
 - contaminated land
 - lighting
 - traffic
 - noise and vibration
 - air quality
 - stormwater.
- Key considerations in the application, including
 - community benefit
 - land tenure
 - ecological impacts
 - noise
 - traffic and roads
 - heritage.

The facilitator invited attendees to discuss the update. CRG members made comments relating to the application being quite long and difficult to read.

The project team noted that:

- There are requirements set by approval agencies that the report must cover. However, the feedback provides a good insight, and the project team will consider publishing a summarised version for future dam improvement projects.
- A baseline noise assessment was done to compare with potential noise levels that will occur during work times.
- Out of hours work is likely throughout the project delivery, however remains the responsibility of the head contractor to confirm (once appointed) as part of managing the project schedule.
- Submissions must be issued to the Department, as the decision maker, not Seqwater.

4 Project site works update

Seqwater shared an update on the project site works including:

- The design is complete and the tender has gone to market for the renovation of some Seqwater owned Murrumba Cottages. There is a plan to commence works in July 2026 (subject to approvals).
- The Wivenhoe Somerset Road intersection works are underway with clearing completed, excavations ongoing, and drainage, pavement, and embankment soil nails upcoming.
- The site geotechnical works are underway with right bank access track and drilling complete, and gallery drilling, piezometer installation and grouting ongoing.

The facilitator invited attendees to discuss the update. CRG members made comments relating to:

- Interest in what would happen to the cottages that are not being upgraded
- wastewater management
- the sound decision to program the cottage renovations during winter, as there is less holiday traffic in the area
- whether the drilling findings reflect what was expected.

The project team shared the following insights:

- the future for the cottages is not yet determined
- the renovated houses will be linked to sewer and water systems
- drilling data is now being interpreted and is generally positive to date
- the drilling data is being built upon to reduce the risk of the project.

5 Legacy project update

Seqwater provided an update on the ongoing assessment of the prioritised legacy projects. This list of prioritised legacy projects was developed by CRG members in Meetings 4 and 5. The legacy project list includes:

- 1) relocation of memorial (which Seqwater has committed to delivering)
- 2) combination of projects 4, 6, and 14, that is:
 - heritage display
 - upgrades to Somerset Day Park
 - new pedestrian footpaths
 - noting the kayak launch site has been removed from this list (due to engineering constraints)
- 3) restoration of the dam viewing lookout on Esk-Kilcoy Road (tied third)
- 4) ~~kayak launch site (tied third)~~
- 5) upgrades to the dam viewing lookout on Esk-Kilcoy Road (tied fifth)
- 6) heritage display (tied fifth)
- 7) new pedestrian paths
- 8) Coronation Hall carpark – option B
- 9) tennis court lighting
- 10) ~~new recreation trail: Village to the Spit.~~

Seqwater noted that the kayak launch site and new recreational trail to the Spit are no longer part of the legacy project options due to significant engineering constraints.

The facilitator invited attendees to discuss the update. CRG members made comments relating to:

- an understanding that there had been communication between councillors and Seqwater about the legacy projects
- disappointment that the kayak launch site has not been included and concerns that without this people will create desired informal paths to launch their kayaks
- an observation that people would appreciate electric barbeques being installed at the Somerset Park.

The project team shared the following insights:

- the whole list is being contemplated as part of the investment request
- the kayak launch was addressed at the last meeting
- for the kayak launch to be included it would need to comply with design and accessibility codes, and this could not be done safely as the slope of the river bank is too great
- the project team spent considerable time working on the kayak launch but could not find a solution
- ongoing maintenance of the park and day use area needs to be considered.

6 Group reflection

CRG members were invited to participate in a group reflection exercise. The facilitator introduced this exercise as an opportunity for CRG members to provide feedback on the CRG process and Seqwater's performance over the past 7 meetings.

The facilitator reminded the group what they said in Meeting 1 when asked to what a successful CRG process might look like. Success factors mentioned in Meeting 1 that related specifically to the CRG process related to:

- visually communicating the change to help community members understand it (e.g. the use of graphics and renders)
- informing the project team, specifically about traffic impacts and traffic management
- involving upstream community members
- holding meetings in-person
- making a contribution to the project and having an influence on project decisions
- being a point of contact between the project team and the community.

The facilitator asked CRG members to respond to the following question: **With all of that in mind, would you say that we are on the path to success?**

CRG members shared the following insights.

- Three members said 'yes'.
- One member noted that it has been challenging because community members are still asking about the potential flood impacts of the project. This member observed that the wider community still do not understand the project.
- The video being created by Seqwater could more clearly communicate project impacts, such as what the water storage would look like when it is at capacity.
- A member asked whether a map could be shared that shows the normal and maximum dam levels and flood levels in extreme events.
- A member noted that the wider community has not been taken on the journey of the project.

The project team responded with the following comments.

- Communicating a bigger dam wall and flood outcomes presents a challenge. The project team will discuss creating a video that explains how a bigger wall, and better flood mitigation does not immediately result in worsened upstream flooding during the types of major floods which we have experienced. A simple way to view flood levels is that a higher dam will continue to operate safely during extreme flood events (beyond those we have previously experienced) when the existing dam wall may have failed. The project team confirmed that more information will be available to explain this process, once the design is progressed through the approval of the Detailed Business Case.
- The project team also noted that there is a balance that needs to be struck between managing concerns about flood impacts and not creating undue stress about the safety of the dam wall when it is still operating as designed.
- The project team is exploring the options for sharing information in regional and rural areas, including regular notices in local newspapers.

The facilitator noted that the flood modelling question has not been closed out, and brought the CRG members back to the question of success. The facilitator then asked the following questions:

Are there things that we should be doing that we are not doing now? What do you want to cover going forward? Are the meetings still valuable? Do you want to maintain your CRG membership?

CRG members suggested that they could send the project team some questions that the community are seeking to have answered. The answers could then be provided to members who could share the responses they receive with the community. This could include questions that address what a taller dam wall would mean for people living in Kilcoy.

7 Meeting close

Before closing the meeting, the facilitator checked in with each CRG member. A member clarified that the additional death that occurred during dam construction was a person who passed away from a heart attack. It was not related to construction.

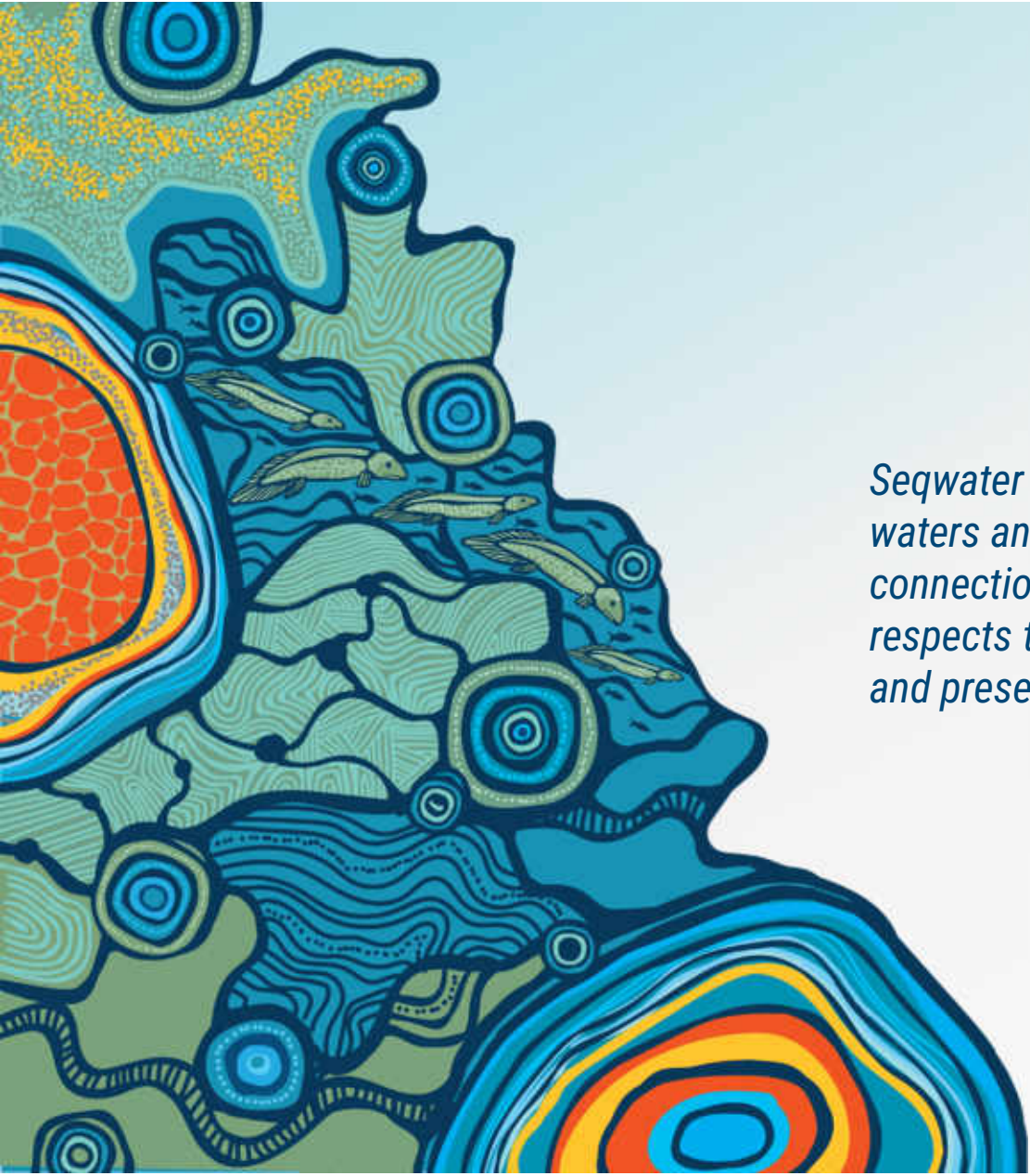
The project team indicated that the next meeting would take place in August 2026.

Appendix A: Presentation

Community Reference Group
Meeting 7

Thursday 14 May 2026





Seqwater acknowledges the Traditional Owners of these waters and surrounding lands and recognises their continued connection to the land, waters and community. We pay our respects to them and their cultures and to elders both past and present.

Agenda

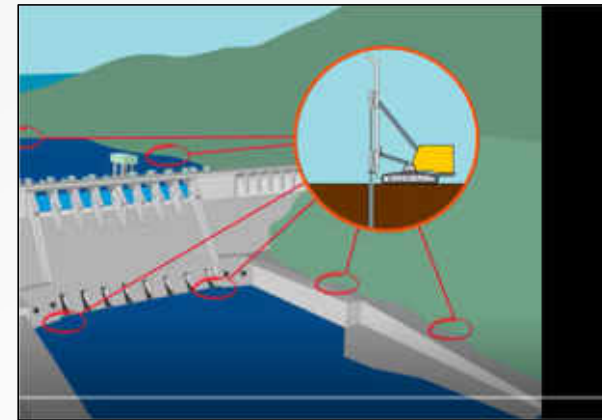
Item	Details
Welcome	<ul style="list-style-type: none">• Housekeeping and introductions
Outstanding actions	<ul style="list-style-type: none">• Nil outstanding
Communications update	<ul style="list-style-type: none">• Update
Managing social impact	<ul style="list-style-type: none">• Update
MID consultation	<ul style="list-style-type: none">• Update
Project & Seqwater owned houses	<ul style="list-style-type: none">• Update
Legacy Project	<ul style="list-style-type: none">• Update
Group reflection exercise	<ul style="list-style-type: none">• Exercise
Conclusion	<ul style="list-style-type: none">• Other business / discussions within community• Key takeaways• Identified future meeting topics• Next meeting

Communications Update



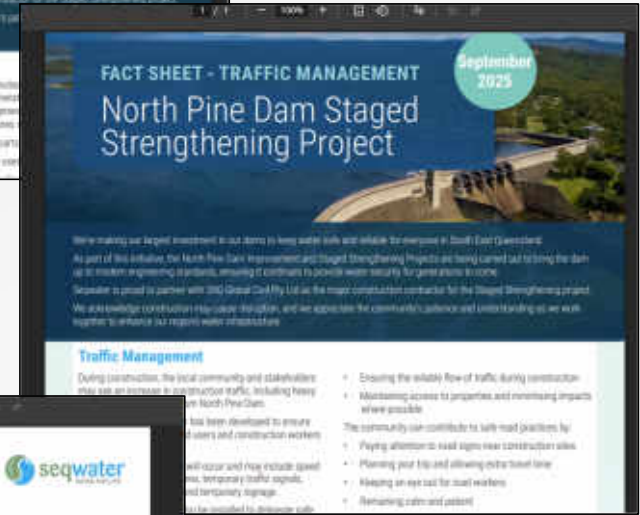
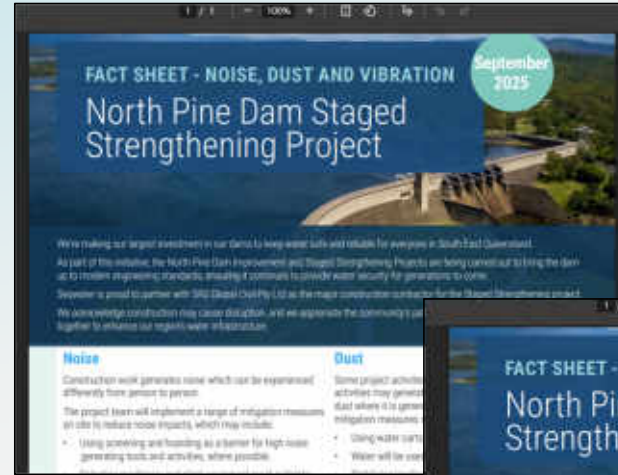
Communications Update

- MID consultation period open – closing May 22nd 2026
- Support for Detailed Business Case finalisation
 - Update on the role of Social Impact Management Plan (SIMP)
 - Managing social impact over project lifecycle
- SDIP promotional video – draft in progress
 - First glimpse at draft animation _____
 - Working promo video _____
 - Any feedback?
- DIP Community Sentiment Survey
- Next project newsletter June 2026
- Information Sessions to follow
- Recreation assessment survey – TBC



Managing social impacts

- Role of a previous voluntary Social Impact Management Plan (SIMP) to align with DIP projects
- Reviewed existing SIMP, tested the document for value
- Limitations on development until construction contractor appointed
- Mitigations outlined elsewhere
- Social impact management guides/factsheets
- Easy to access, read and digest information that can be updated as needed as project progresses



Ministerial Infrastructure Designation

Consultation now live

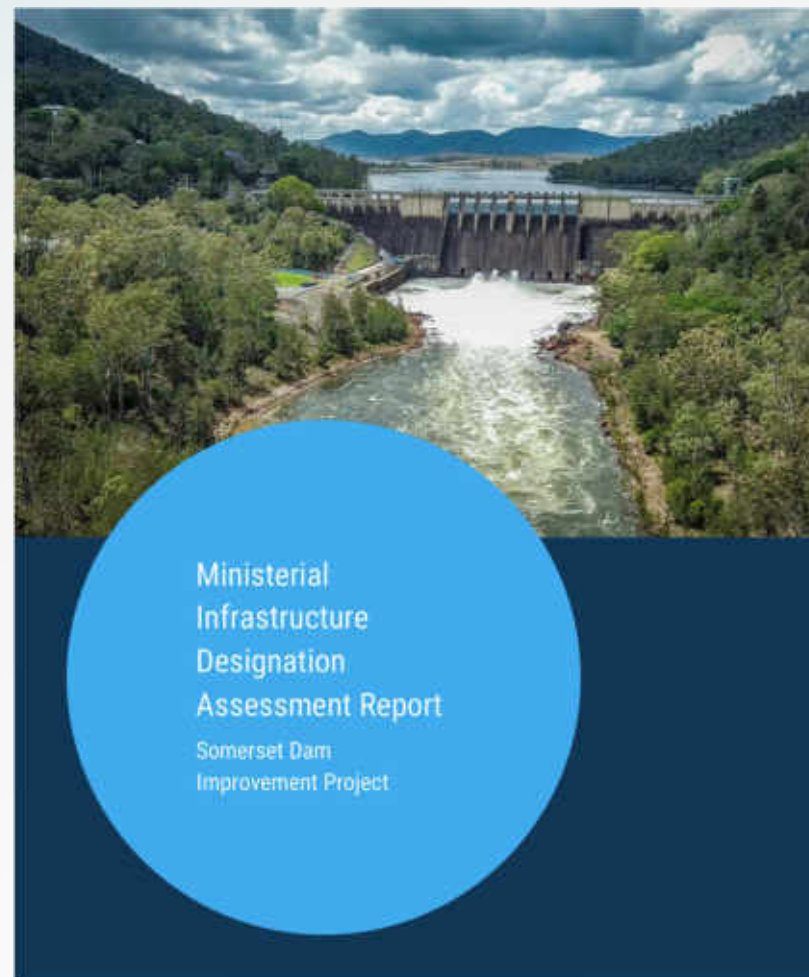
Ministerial Infrastructure Designation (MID)

What is a MID?

- An MID is a planning approval process for delivery of key community infrastructure
- Development under a designation is accepted development under the Planning Act 2016

The process

- The MID process is set out in the Minister's Rules and Guidelines
- MID submission is assessed by the Planning Minister
- Assesses land use planning matters (e.g. project activities, environment, traffic, amenity)
- Coordinated assessment of state agency interests
- Involves community consultation



MID

Why was this pathway chosen?

- Pathway provides a coordinated, whole-of-government approval pathway
- Department of State Development, Infrastructure and Planning manages the assessment process including State agency inputs, manages the resolution of assessment matters and conditioning of the proposed development
- Reduce the number of individual approvals and permits for the project
- A faster assessment pathway compared to the alternative pathways considered:
 - Coordinated Project under the State Development and Public Works Organisation Act 1975 (for development requiring a more complex level of environmental impact assessment)
 - Individual development applications for various development matters under the Planning Act 2016
(e.g. Material Change of Use, Reconfiguration of land, Operational Works)

MID

What has been applied for?

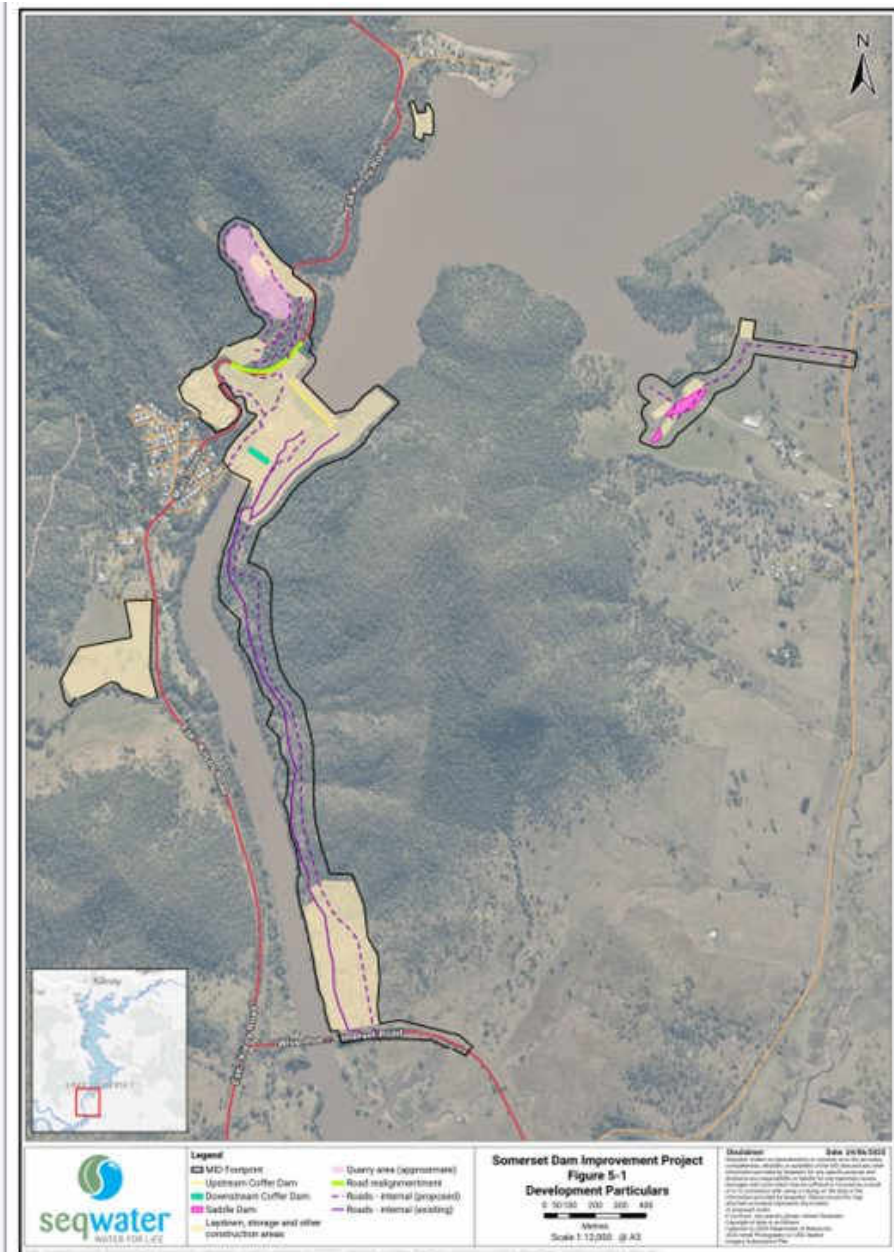
- The MID seeks approval for the following infrastructure categories:
 - Item 19 – Water cycle management infrastructure
 - Item 20 – Storage and works depots and similar facilities, including administrative facilities relating to the provision or maintenance of infrastructure stated in this part.



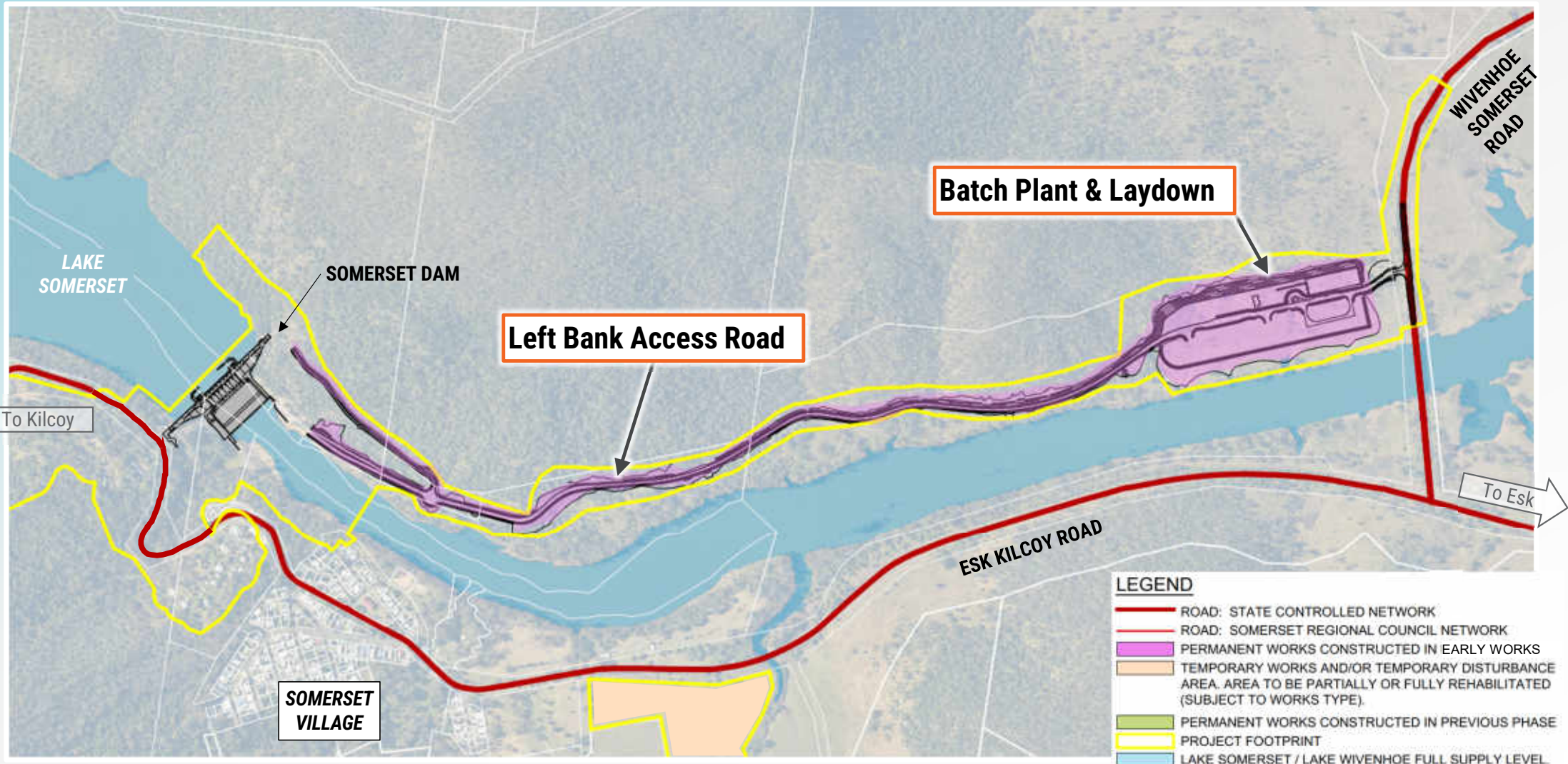
MID

Proposed development

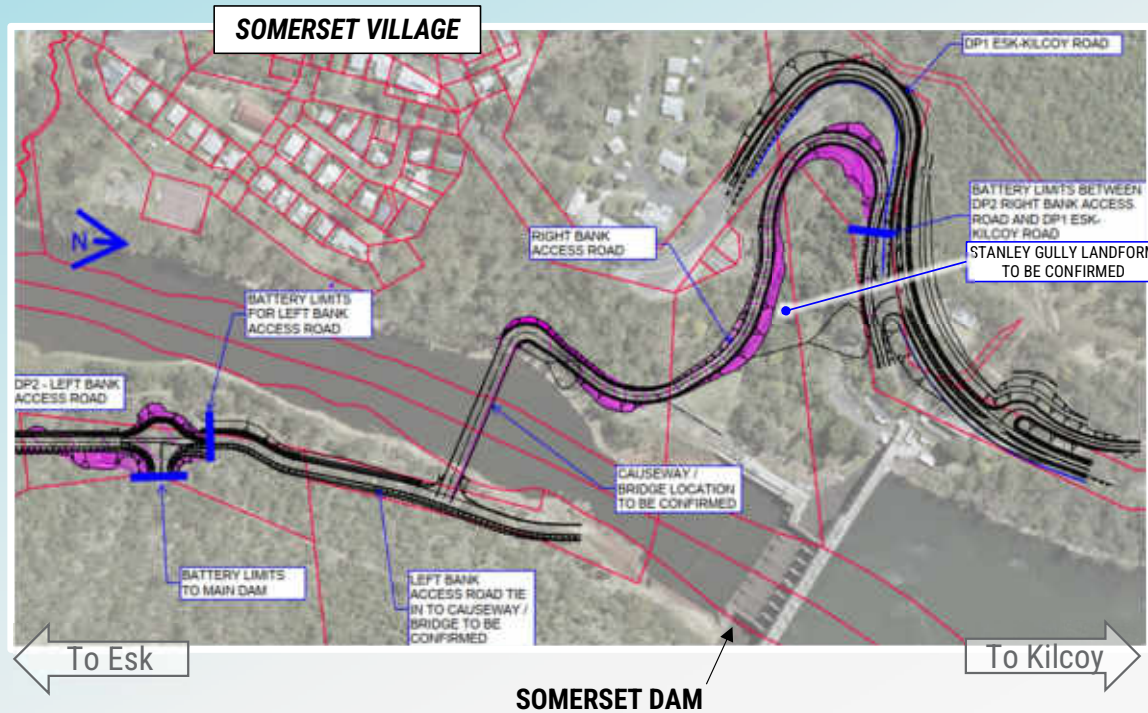
- **Temporary works and activities:**
 - construction site offices, laydown areas, sheds, car parking
 - concrete batch plant
 - quarry (re-use of existing)
 - coffer dam
- **Permanent:**
 - main dam upgrade
 - saddle dam
 - left and right bank access roads
 - realignment of Esk-Kilcoy Road segment
 - refurbishment of Somerset cottages
 - operation facilities: office, workshop, car parking, other ancillary facilities, emergency helicopter landing facility



Left Abutment Access Road & Batch Plant



Right Bank Access Road

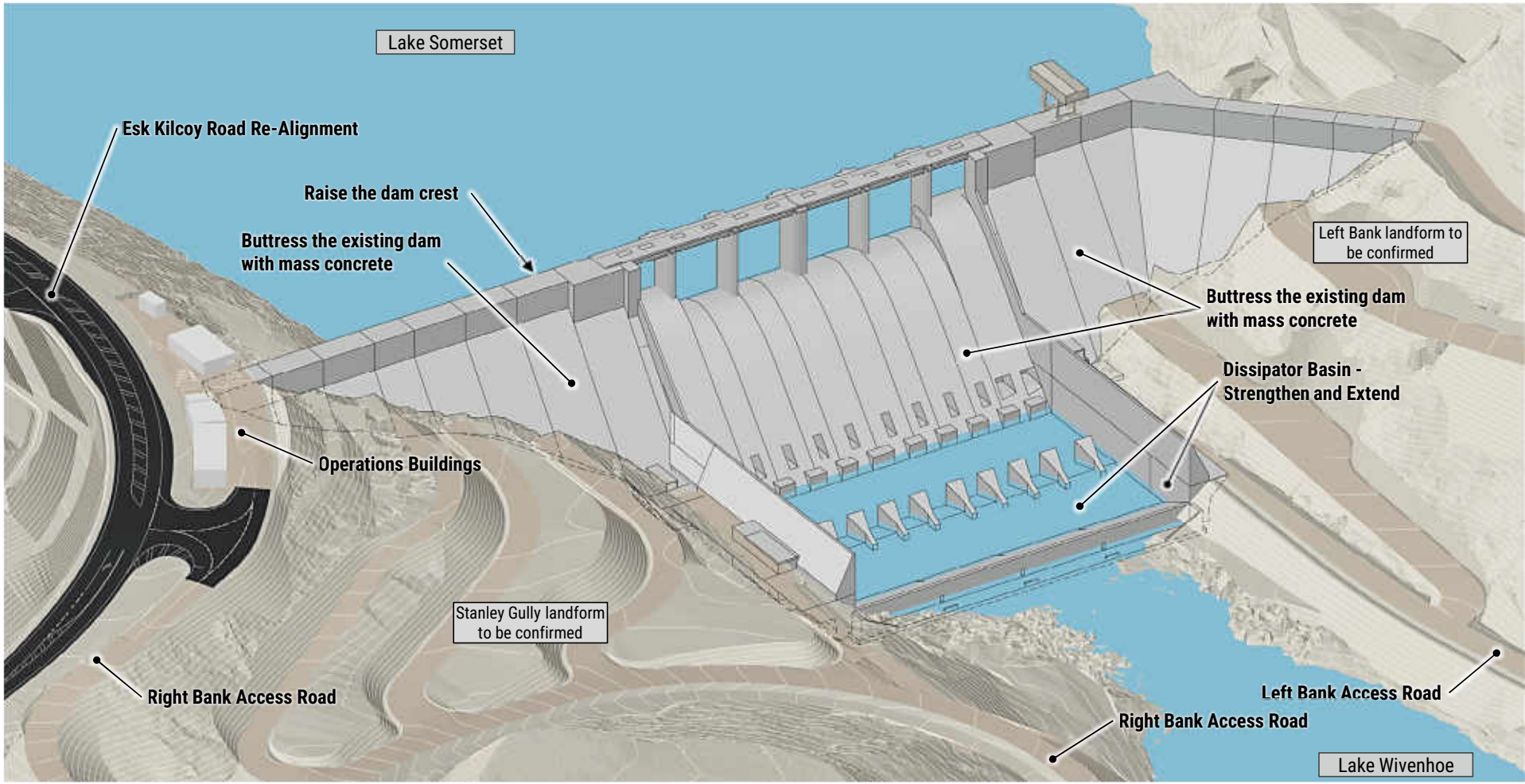


Purpose

- Prepare site for access during construction of Main Dam Works
- Provide key safe access from existing quarry to proposed concrete batching plant
- Enable main dam works Buttress & Crest Raising Works



Project Scope – Main Dam Works



3D VIEW OF IMPROVED MAIN DAM (NOTE: WORK IN PROGRESS)

Refurbishment of Somerset cottages



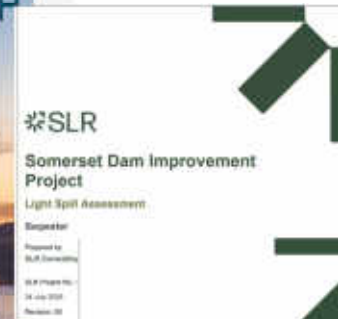
How the MID was prepared

- The MID was prepared to address the criteria stated in the Minister's Guidelines and Rules
- The MID application includes assessment of a number land use and planning matters to identify project impacts and develop mitigation and management measures
- Technical specialists were engaged to complete these assessments:
 - Flora and fauna
 - Bushfire hazard risk
 - Cultural heritage
 - Jinibara People
 - Contaminated land
 - Lighting
 - Traffic
 - Noise and vibration
 - Air quality
 - Stormwater



BUSHFIRE HAZARD ASSESSMENT AND MANAGEMENT PLAN

Somerset Dam, Queensland
11 July 2025



How the MID was prepared

Technical Agency Consultation

- Extensive pre-lodgement engagement has been undertaken with Queensland Government departments since 2019. This includes:
 - Office of the Coordinator General
 - Department of State Development, Infrastructure and Planning
 - Department of Primary Industries
 - Department of Environment, Tourism, Science and Innovation
 - Department of Transport and Main Roads
 - Department of Natural Resources and Mines, Manufacturing and Regional and Rural Development
 - Department of Local Government, Water and Volunteers
 - Department of Women, Aboriginal and Torres Strait Islander Partnerships and Multiculturalism
 - Department of Climate Change, Energy, the Environment and Water (Commonwealth)

Key considerations

Community benefit

- Somerset Dam plays a critical role in flood mitigation and long-term water security for SEQ through:
 - Upgrading the existing Somerset Dam to meet current dam safety requirements.
 - Maintain flood mitigation and climate resilience through improving dam capacity to withstand extreme weather events
 - Enable long-term water security

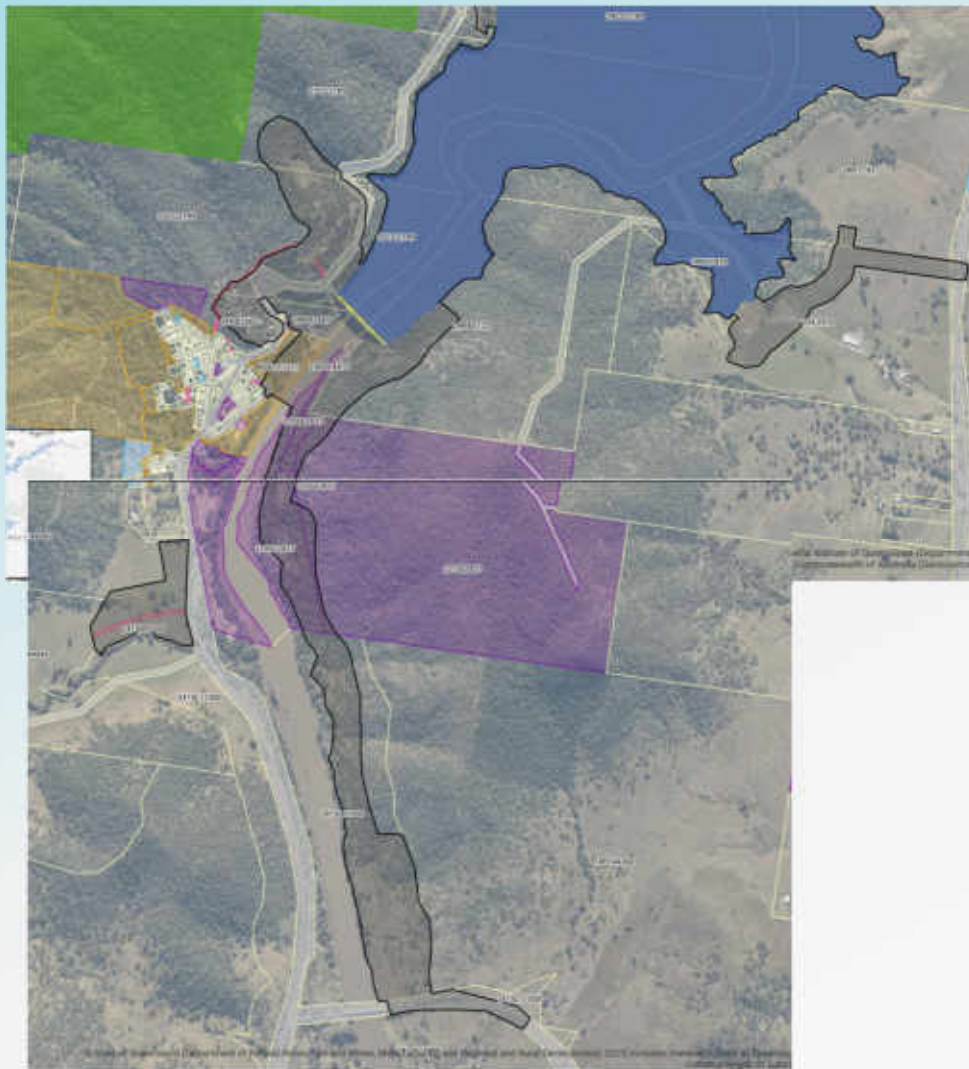
Land tenure

- Need to be suitable for the proposed infrastructure
- Seqwater owns the majority of land within the MID footprint
- Taking actions to address and resolve tenure on reserves, area subject to Native Title rights and freehold land

Ecological Impacts (MSES)

- Impacts of vegetation clearing on habitat of protected species:
 - Koala
 - Black-breasted button quail
 - Brush-tailed rock-wallaby
 - Grey-headed flying fox
 - Essential habitat
- A land-based offset will be provided to compensate for the residual impacts on these species

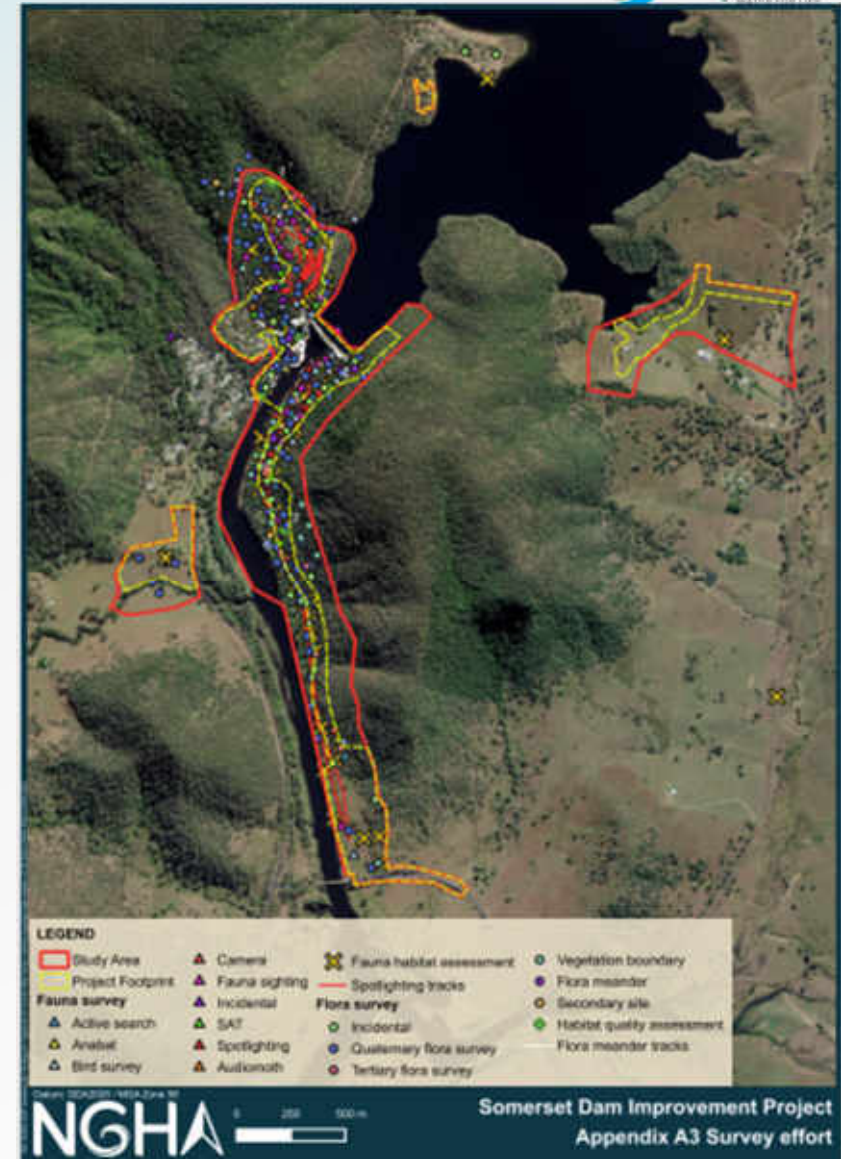
Land tenure



SDIP

Survey effort to determine the project impacts on MNES

- Ecological assessments were undertaken by qualified ecologists to assess the potential project impacts on ecological values (State and Commonwealth)
- Fieldwork undertaken between 2021-2026



SDIP

Threatened fauna habitat

Brush-tailed Rock-wallaby



Black-breasted Button-quail



SDIP

Threatened fauna habitat

Koala (dispersal, foraging & refuge)



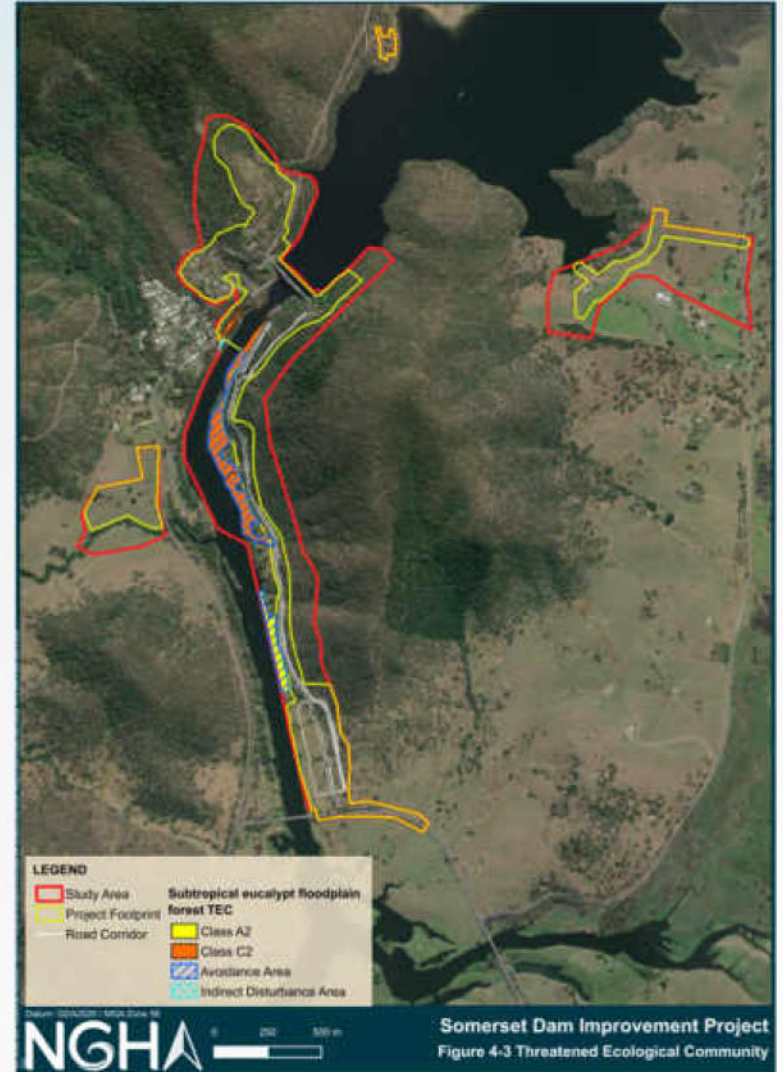
Grey-headed Flying-fox (Foraging & potential roosting)



SDIP

Threatened Flora Offset investigations

- Subtropical eucalypt floodplain forest and woodland





Key considerations

Noise

- There will be noise from construction activities
- Core work hours – 6.00am to 6.00pm Monday to Saturday
- Likely to incorporate dual shifts (inc. 24/7) for critical works e.g. concrete batching and pouring, critical dam operation activities
- Noise Management Plan will address mitigation and management measures to reduce noise emissions from project activities

Traffic and Roads

- Traffic volumes at different project stages
- Assessed capacity of the current road network to accommodate project traffic
- Road network upgrades

Heritage

- Conserve historic and Aboriginal heritage values of the project area.
- Sensitive restoration of Seqwater workers cottages

Next steps



MID process output

- The final output will be a Decision Notice issued by the Planning Minister granting approval of the designation.
- Decision Notice will include:
 - infrastructure that is approved to occur within the MID area
 - a notice of requirements (i.e. conditions that must be met)

Key points to note:

- Infrastructure and uses can continue to operate within the MID footprint as long as they are consistent with the MID decision
- The MID will cease to have effect 6 years after the designation starts if Seqwater does not own or have appropriate tenure of the land
- Seqwater has a responsibility to continue to comply with the designation requirements (conditions) for the duration of the designation
- Activities outside the MID footprint or differing from the MID decision may trigger a need to amend the MID, another approval

Additional approvals

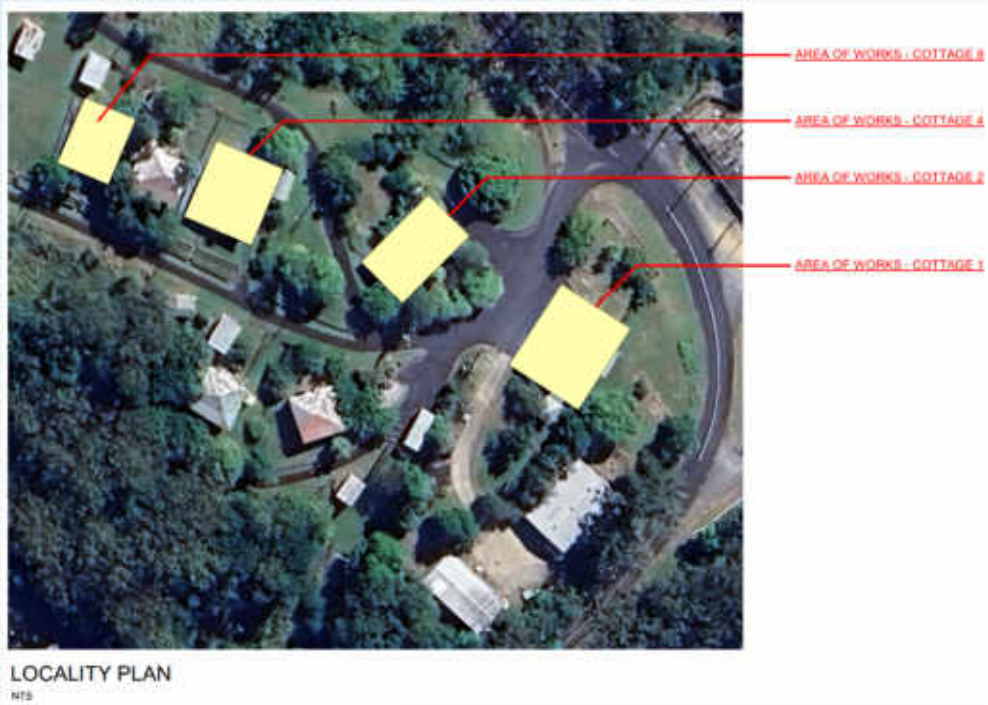
- *EPBC Act 1999*
 - Controlled action requiring assessment by preliminary documentation
- *Nature Conservation Act 1992*
 - Species Management Program
 - Clearing of Protected Plants
 - Nature refuge revocation
- *Water Act 2000*
 - Resource Operations Licence changes for temporary works
- *Environmental Protection Act 1994*
 - Environmental Authority for Environmentally Relevant Activity (on-site quarry)
- *Aboriginal Cultural Heritage Act 2003*
 - Cultural Heritage Management Agreement
- *Native Title Act 1933*
 - Indigenous Land Use Agreement
- *Land Act 1994*
 - Road closure and opening
 - Permit to work on roads



Project Site works - Update

Seqwater owned houses – Murrumba Cottages

- Design complete
- Tender to Market
- Renovation of Houses 1,2,4 & 8
- Plan to commence works – July 2026



Wivenhoe Somerset Rd – Intersection

- Tree Clearing - complete
- Excavations – ongoing
- Drainage - upcoming
- Pavement - upcoming
- Soil nails - upcoming



Site Geotechnical works

- Gallery Drilling - ongoing
- Right bank access track - complete
- Right Bank drilling – complete
- Piezometer install and grouting - ongoing



Geotechnical Works to date

Drainage Curtain - ongoing

- 34 installed (1726m)
- 30 remain

Main Dam investigation - ongoing

- 68 holes drilled (2500m)
- 12 holes remain

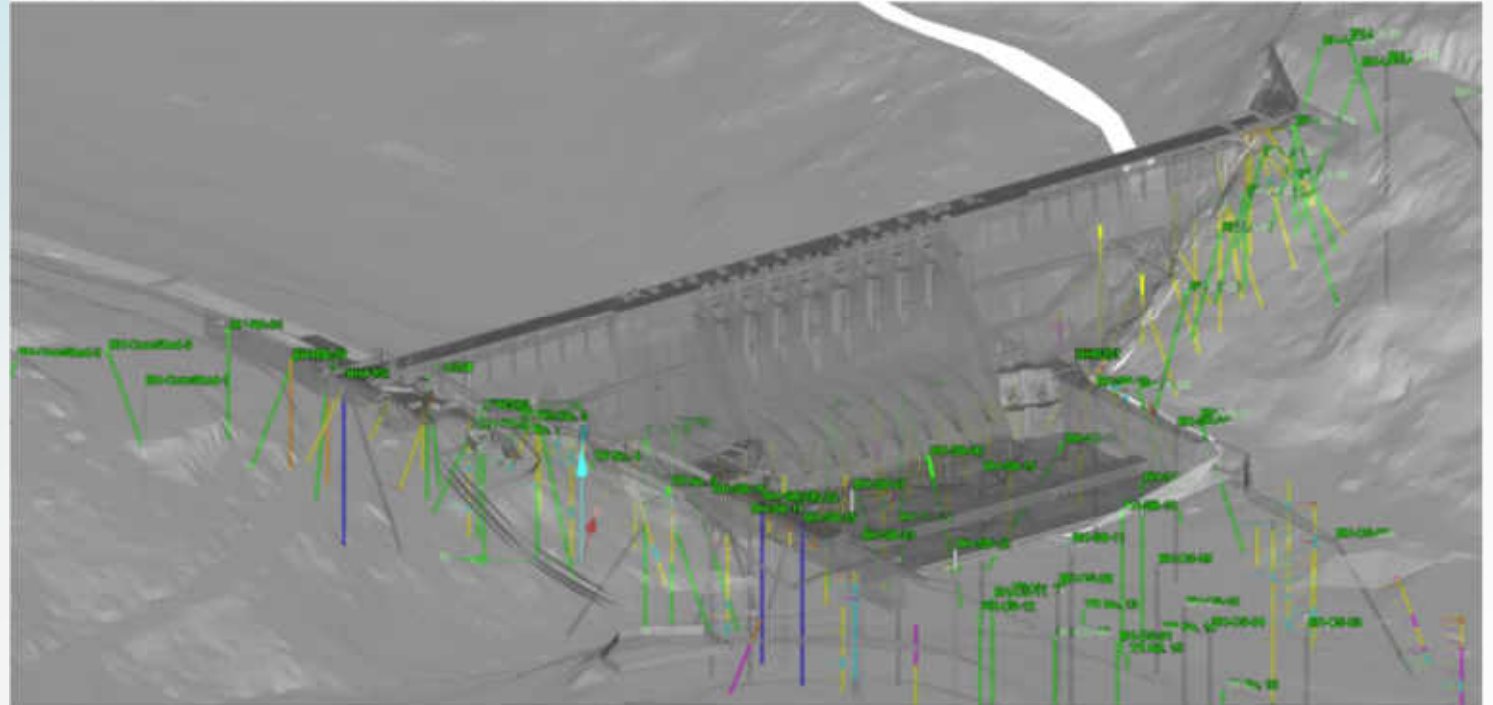
Barge Drill - complete

- 18 holes drilled (577m)

Civil Road works - complete

- 45 holes drilled (484m)

Isometric View – Dam & Downstream



Legacy Project Update

Summary of legacy feedback from last CRG meeting

Updated prioritised list of legacy projects

- 1) Relocation of memorial (assumed by Seqwater)
- 2) Combination of projects 4, ~~5~~, 6 and 14
 - Heritage display
 - ~~Kayak launch site~~
 - Upgrades to Somerset Day Park
 - New pedestrian footpaths
- 3) Restore the dam viewing lookout on Esk Kilcoy Road (tied third)
- 4) ~~Kayak launch site (tied third)~~
- 5) Upgrade the dam viewing lookout on Esk Kilcoy Road (tied fifth)
- 6) Heritage display (tied fifth)
- 7) New pedestrian paths
- 8) Coronation hall carpark refresh – option B
- 9) Tennis Court lighting
- 10) ~~New recreation trail: Village to the Spit~~



Outdated signs at lookout



Project 6: Upgrades to day area (Somerset Park).



Examples of low maintenance, nature based playground and BBQ



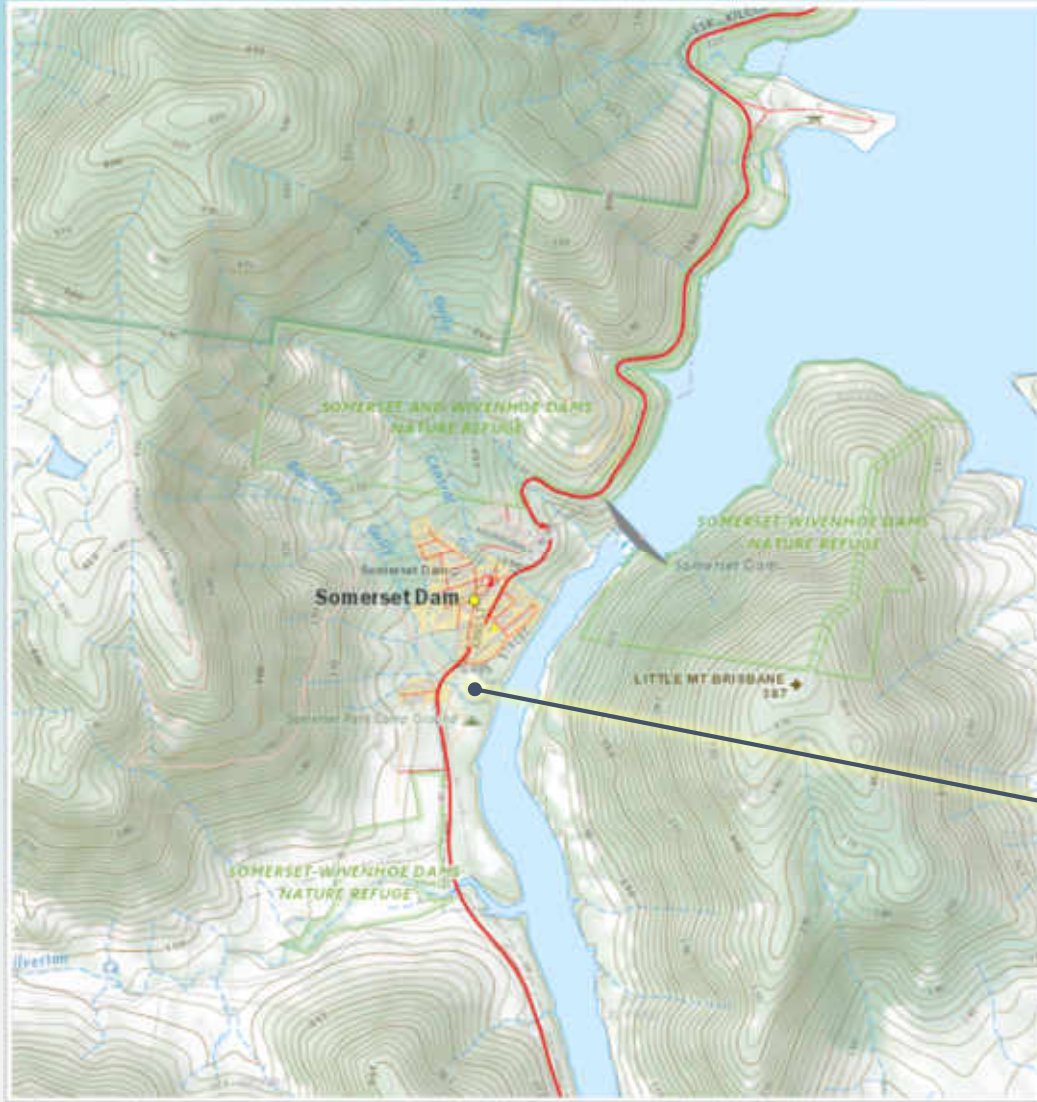
Potential Scope:

- Expand facilities offerings at Somerset Park.
- Minimalistic Playground (swings, nature based play, paths etc)
- BBQ (integrate with existing facilities).
- Possible augmentation of parking area
- Access track and landscaping (low maintenance)
- Connectivity to campground

Potential Limitations/Risks:

- Who will own and maintain asset?
- Possible misalignment with Seqwater recreational policy.
- Seqwater Recreation Master Plan under development (early planning)

Legacy Projects Ideas

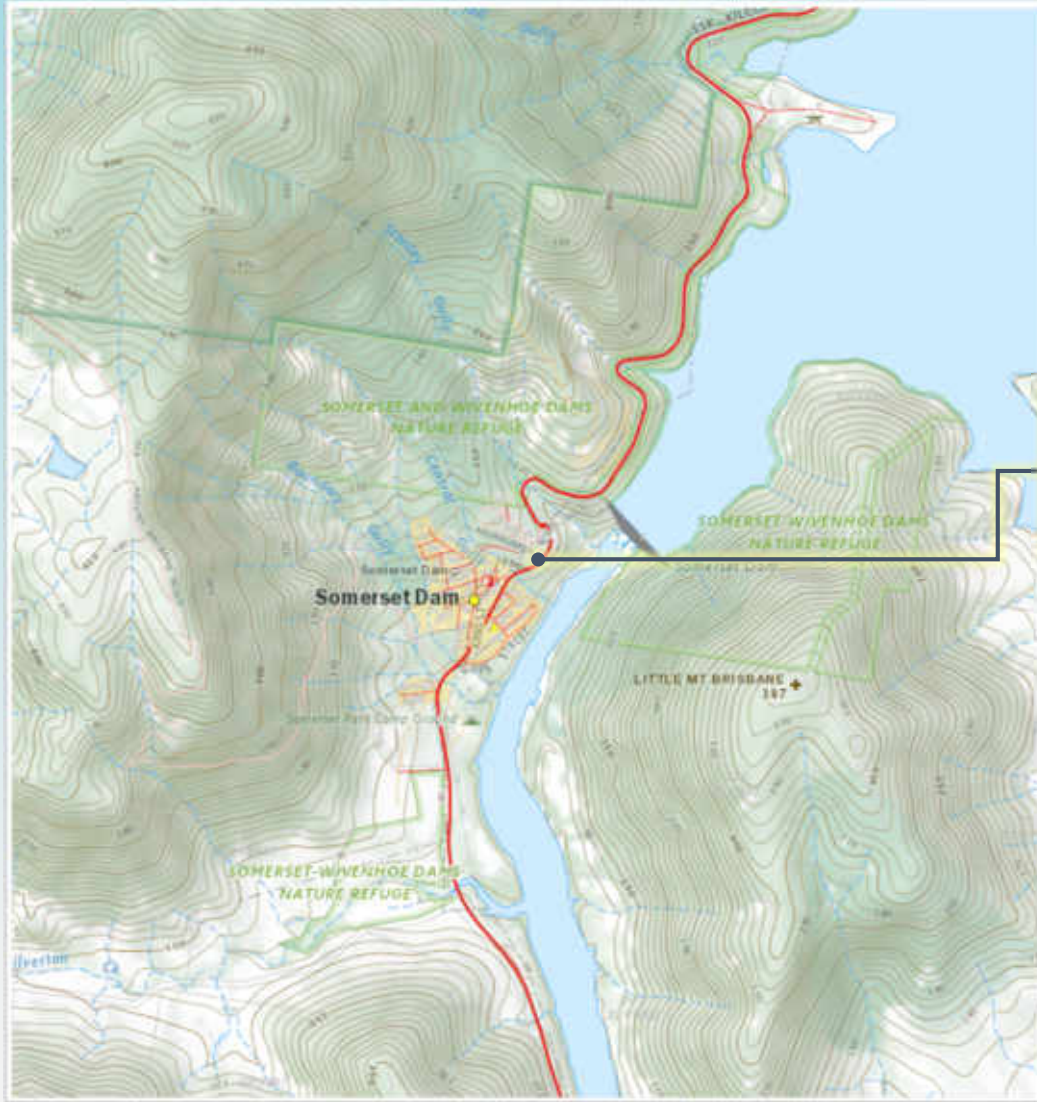


- Project 1A: Restore Dam Viewing Lookout
- Project 1B: Upgrade Dam Viewing Lookout
- Project 3: New Recreation Trail: Village → Spit
- Project 4: Heritage Display (Dam related)
- Project 5: Kayak Launch Site
- Project 6: Upgrades to day area (Somerset Park)
- Project 8: Tennis Court Lighting
- Project 12: Relocation of Memorial
- Project 14: New Pedestrian Paths
- Project 16: Coronation Hall Car Park – Option B
- Project 17: Combination of Project 4, 5, 6 & 14**

Project 17: Combination of Project 4, 5, 6 & 14

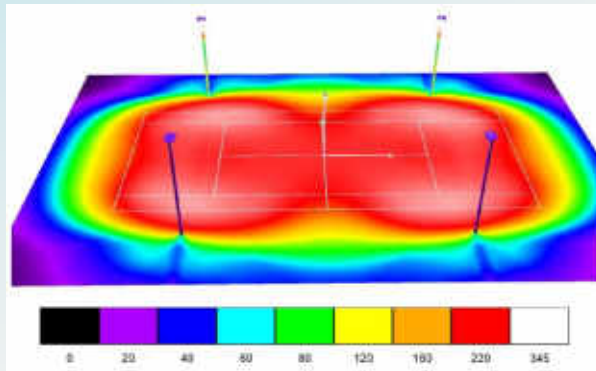
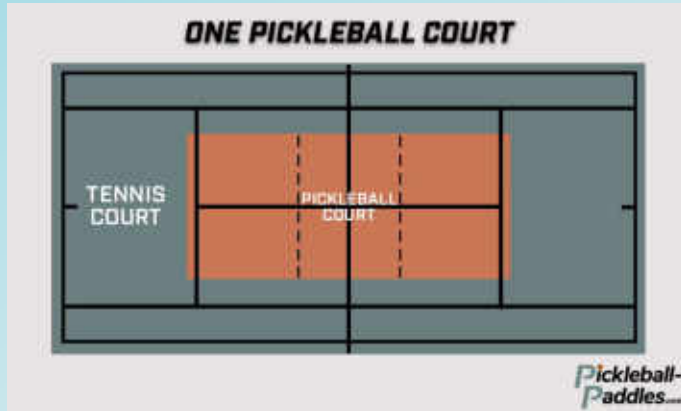


Legacy Projects Ideas



- 1) Project 12: Relocation of Memorial
- 2) Combination of Projects 4, 5, 6 and 14
 - Project 4: Heritage Display (Dam related).
 - ~~Project 5: Kayak Launch Site~~
 - Project 6: Upgrades to day area (Somerset Park)
 - Project 14: New Pedestrian Paths
- 3) Project 1A: Restore Dam Viewing Lookout + Extension of Footpath to dam viewing lookout. + Coronation Hall Carpark – Refresh.
- 4) ~~Project 5: Kayak Launch Site~~
- 5) Project 1B: Upgrade Dam Viewing Lookout
- 6) Project 4: Heritage Display (Dam related).
- 7) Project 14: New Pedestrian Paths
- 8) Project 16: Coronation Hall Car Park – Option B
- 9) **Project 8: Tennis Court Lighting**
- 10) ~~Project 3: New Recreation Trail: Village → Spit~~

Project 8: Tennis Court Lighting



Potential Scope:

- LED outdoor lighting for 2-Tennis Courts (recreational only).
- Concrete footings, poles, lights, spill shields, U/G conduits, control equipment and connection to grid.
- Light pollution assessment.
- Security Lighting (if required).
- Coin, token or smart card operated meter and timer to control LED outdoor lighting.
- Pickle ball incorporation.
- Aligns with regional investment into sport and recreation facilities

Potential Limitations/Risks:

- Light pollution – would need investigation.
- Who will own and maintain asset?
- Who pays for power?
- Curfew / timeout for lights?
- Copper theft.

Group reflection exercise

Reflection

Success Factors

- The change visually communicated to help community understand it.
- Able to inform the project team, specifically about traffic impacts and traffic management.
- Upstream community members involved.
- Meetings held in-person.
- Able to contribute to the project and have an influence on the project team's decisions.
- CRG is a point of contact between the project team and the community.

Other business

Other business

Community raised concerns

Key takeaways

Next meeting

August 2026



Thank you

