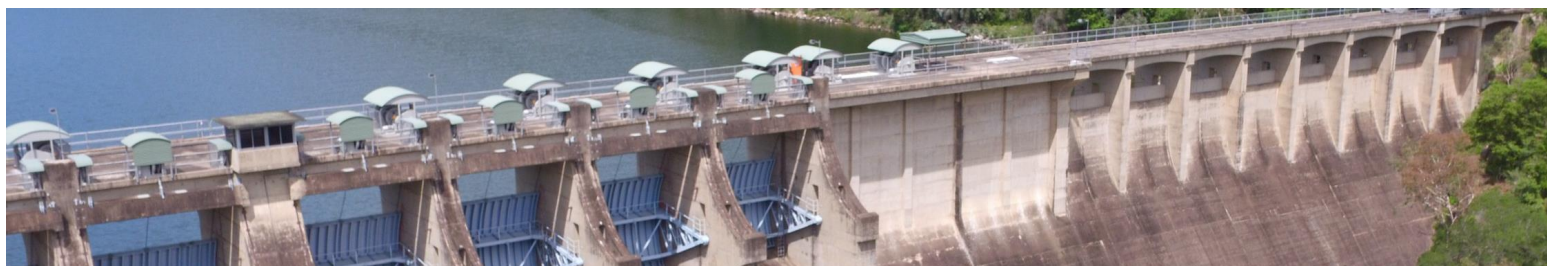


Somerset Dam Upgrade

Dam Improvement Program

January 2020



Somerset Dam is one of several dams to be upgraded as part of Seqwaters Dam Improvement Program.

Like all major infrastructure, dams are regularly assessed and upgraded to comply with improving engineering standards and guidelines.

Dam Safety

In Queensland, dam owners are responsible for the safety of their dams under the Water Supply (Safety and Reliability) Act 2008 (the Act). The Department of Natural Resources, Mines and Energy requires Seqwater to comply with the Queensland Dam Safety Management Guidelines under the Act.

We also seek to meet the national guidelines set by the Australian National Committee on Large Dams (ANCOLD).

Somerset Dam was built between 1935 and 1959. Since then, there have been significant changes including:

- population growth downstream
- advances in dam design
- improved estimation of extreme rainfall and flood events
- improved understanding of earthquake probabilities and loads.

In 2012-13 we commissioned an independent review which found improvements are needed at a number of our dams to meet the current dam safety guidelines and the latest engineering standards.

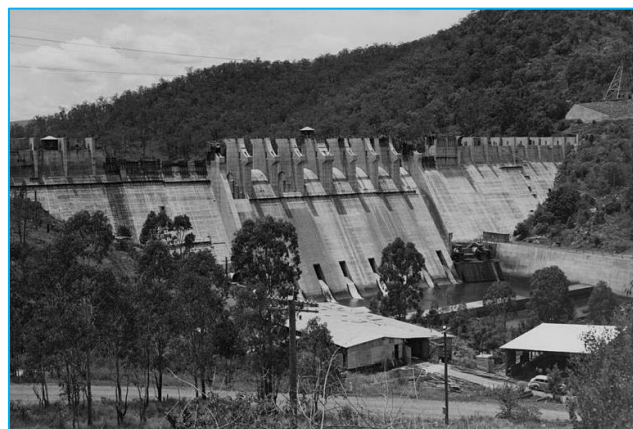
About the upgrade

A preliminary business case for the upgrade, including a preliminary social impact evaluation, was completed in 2019. Building Queensland and Seqwater are now working together to undertake a detailed business case for the project.

We are reviewing designs and planning to minimise impacts to the environment and the community. We also need to maintain water supply and flood mitigation benefits and keep the lake open to recreation.

The upgrade project is expected to include:

- Raising the dam walls to withstand higher floods
- Making the spillway dissipator basin larger and stronger
- Strengthening the dam walls with additional concrete
- Changes to the spillway, including either removing or replacing the spillway gates.



*Somerset Dam under construction, 1949.
(Qld State Archives)*



Timing

Construction of the upgrade is dependent on State Government approvals. Construction is expected to begin in 2022 (subject to approvals) and may take up to four years to complete.

2012-14	✓
DAM SAFETY REVIEW	
2017-19	✓
OPTIONS ANALYSIS AND CONCEPT DESIGN	
Current	←
BUSINESS CASE	
2021	👁️
DESIGN AND APPROVALS	
2021 - 22	👁️
PROJECT PLANNING	
FROM 2022	👁️
CONSTRUCTION START	

Community Reference Group

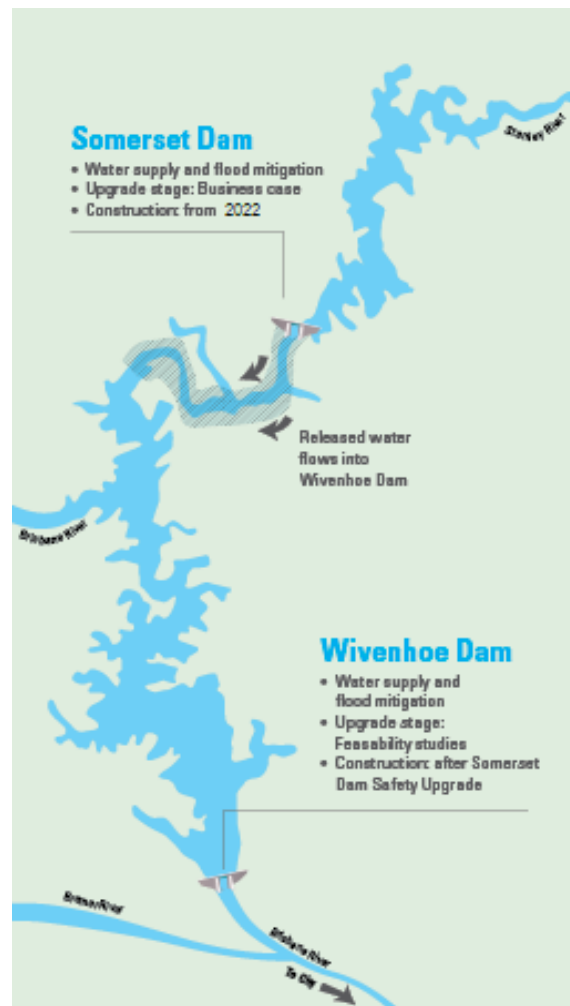
Seqwater is establishing a Community Reference Group (CRG) for the Somerset Dam Upgrade. The community representatives will work collaboratively with Seqwater to develop and implement a Social Impact Management Plan for the project. You can provide feedback to the CRG through the project webpage.



Aerial view of Somerset Dam

Lake Levels

The temporary full supply water level of Somerset Dam will be maintained at 97m AHD, 2m lower than the normal full supply level, during the upgrade work. We will reinstate the normal full supply level when the upgrade is completed.



Keeping you informed

- w** seqwater.com.au/project/somerset-dam-upgrade
- e** somersetupgrade@seqwater.com.au
- s** seqwater.com.au/subscribe-our-e-updates
- p** 1300 SEQWATER (1300 737 928)



Non-English speakers call 131 450 and ask for Seqwater on 07 3035 5500.



If you have a hearing or speech impairment contact us through the National Relay Service and give the number 07 3035 5500. Visit www.relayservice.gov.au for more information.