

Water AND THE Land



Irrigation channels

Queensland is one of Australia's premium food bowls and irrigation channels play a key role in supporting our farming and agriculture.

An irrigation channel is a man-made structure that transports water from one location to another either from a river or dam.

There are hundreds of kilometres of irrigation channels across Queensland which deliver water to more than 6,200 irrigation customers.

There are many different types of channels but most are open and can be manually operated to regulate the water flow.

It's important to stay away from channels and don't swim in the water. Large volumes of water can flow through the channels at high speed. Submerged hazards such as logs, pipes and rocks could also be under the water which could trap you if you jump in.

What is a CATCHMENT?

A catchment is like a giant bowl in the land which collects water.

Gravity triggers the water and rain in a catchment to flow downhill to where it collects naturally in creeks, rivers or lakes.

The water collected is used to help supply homes, businesses and agriculture through dams and weirs, and tapping into groundwater.

If you live in a catchment near a major creek, river or dam, it's important to not only help keep our waterways clean. It is also important to understand the sources of water in your local area and the likelihood of flooding so you can be prepared and stay safe.



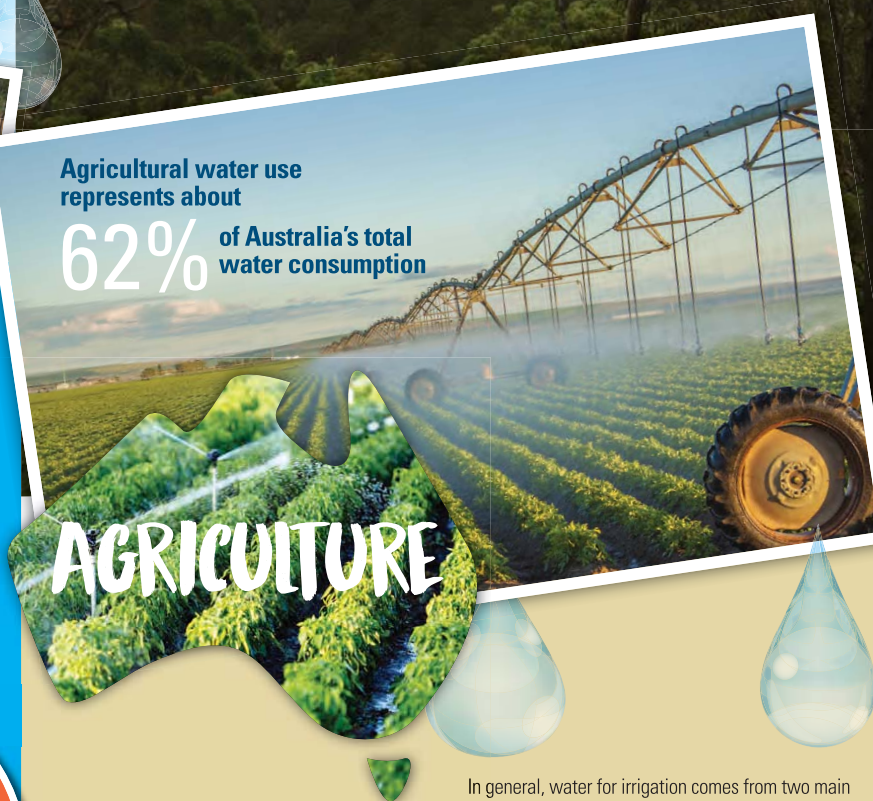
EXPLORE THE WATER CYCLE FROM CATCHMENT TO TAP!

Come behind the scenes and see first-hand how drinking water is treated and supplied across South East Queensland. Learning experiences are held at major Seqwater dams, water treatment plants – even the Gold Coast Desalination Plant. These experiences cater for primary schools, secondary schools, TAFE, university groups as well as professional delegations and community groups.

Book a learning experience by emailing education@seqwater.com.au or visiting seqwater.com.au/education

Agricultural water use represents about

62% of Australia's total water consumption



AGRICULTURE

The agricultural industry is the largest consumer of water in Australia.

Agricultural water use represents about 65% of Australia's total water consumption, with most being used in irrigation – the supply of water to land or crops to help growth.

Water is used to produce an enormous range of products, many of which we consume each day.

Agricultural production in Australia relies heavily on good water management - in plants, in the soil and at the field and farm level.

In general, water for irrigation comes from two main sources, river systems and underground aquifers.

Major river systems used for irrigation in Australia include the Murray-Darling system, the Ord River in the Kimberley region of Western Australia and many rivers along the east coast of Australia.

In Queensland, water authorities such as Seqwater and SunWater operate water supply schemes, which provide water to more than 6,200 rural irrigation customers.

These customers use the water to produce cotton, dairy, vegetable and grain crops and sugarcane.

