

April 2022



Here's your regular update on:

Announce Allocations as at 1 April

Groundwater Bore Level Graphs

Metering requirements

GW & SW Zone Maps

## Announced Allocation Increase

As per the rules in the Central Lockyer Valley WSS Operations Manual the announced allocation % have been reviewed as at 1 April 2022.

The announced allocations effective now are:

### Groundwater (Increase)

Low Priority (all zones) – 100% (increase from 60%)

Medium Priority (all zones) – 100% (increase from 80%)

### Morton Vale Pipeline (no change)

Medium Priority B – 100%

### Surface Water (increase)

Medium Priority C – All zones 60%

- Zones 1 & 4 (increase from 28%)
- Zones 2,3 & 5 (increase from 57%)

As water continues to be diverted into Lake Clarendon, we will review the announced allocation % monthly.

Groundwater announced allocation observation bore levels have increased on average 2.3m during the last two months. With two bores increasing just over 8m each (Zone 2 & Zone 8). For your interest on the next page you will see the levels for each bore per zone since the 1 November 2020. The blue line is the actual bore level and the orange line is the critical level from the Operations Manual. The critical level determines the groundwater announced allocation. You can see that all bore levels are well above the critical level, hence the increased groundwater announced allocation %. For detailed information on all water sharing rules please refer to the Operations Manual which can be found on our website [here](#).

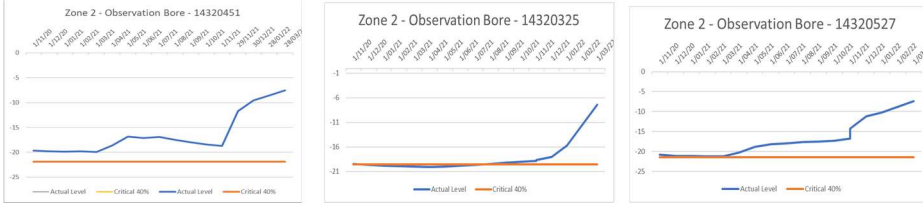
## Metering

Now that water is available to be taken in your scheme, please remember that all water taken must be taken through a working meter. If you do not have a meter, your meter is not working or you don't think your meter is working properly, please contact your Irrigation Team by email [irrigators@seqwater.com.au](mailto:irrigators@seqwater.com.au) or call 1800 077 005 and they will be able to help you.

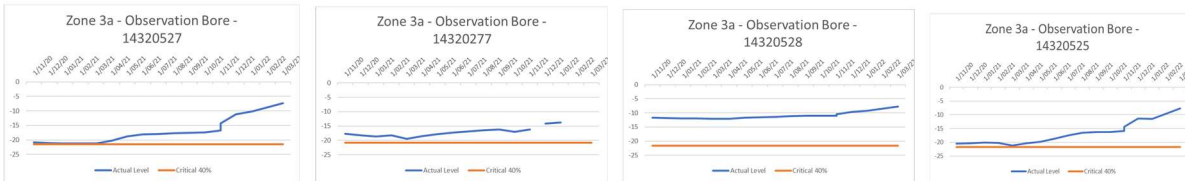


# Groundwater Announced Allocation Bore Levels as at 1 April 2022

## Zone 2



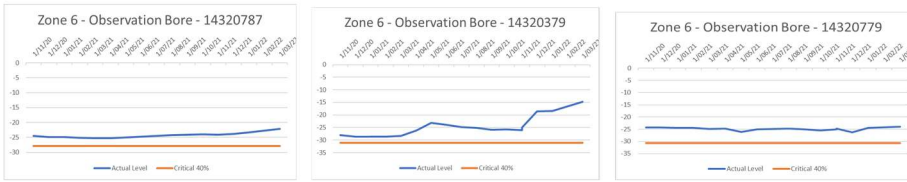
## Zone 3



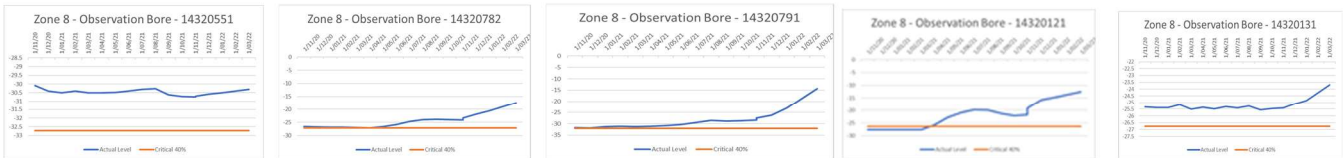
## Zone 5



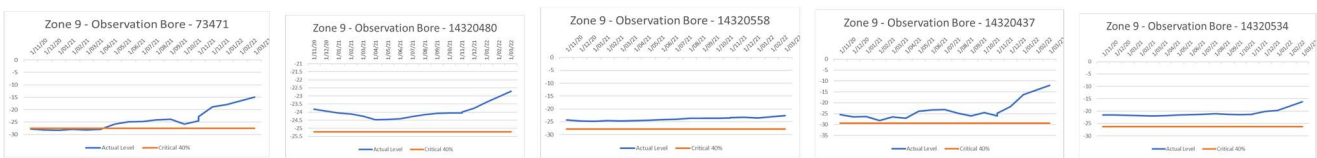
## Zone 6



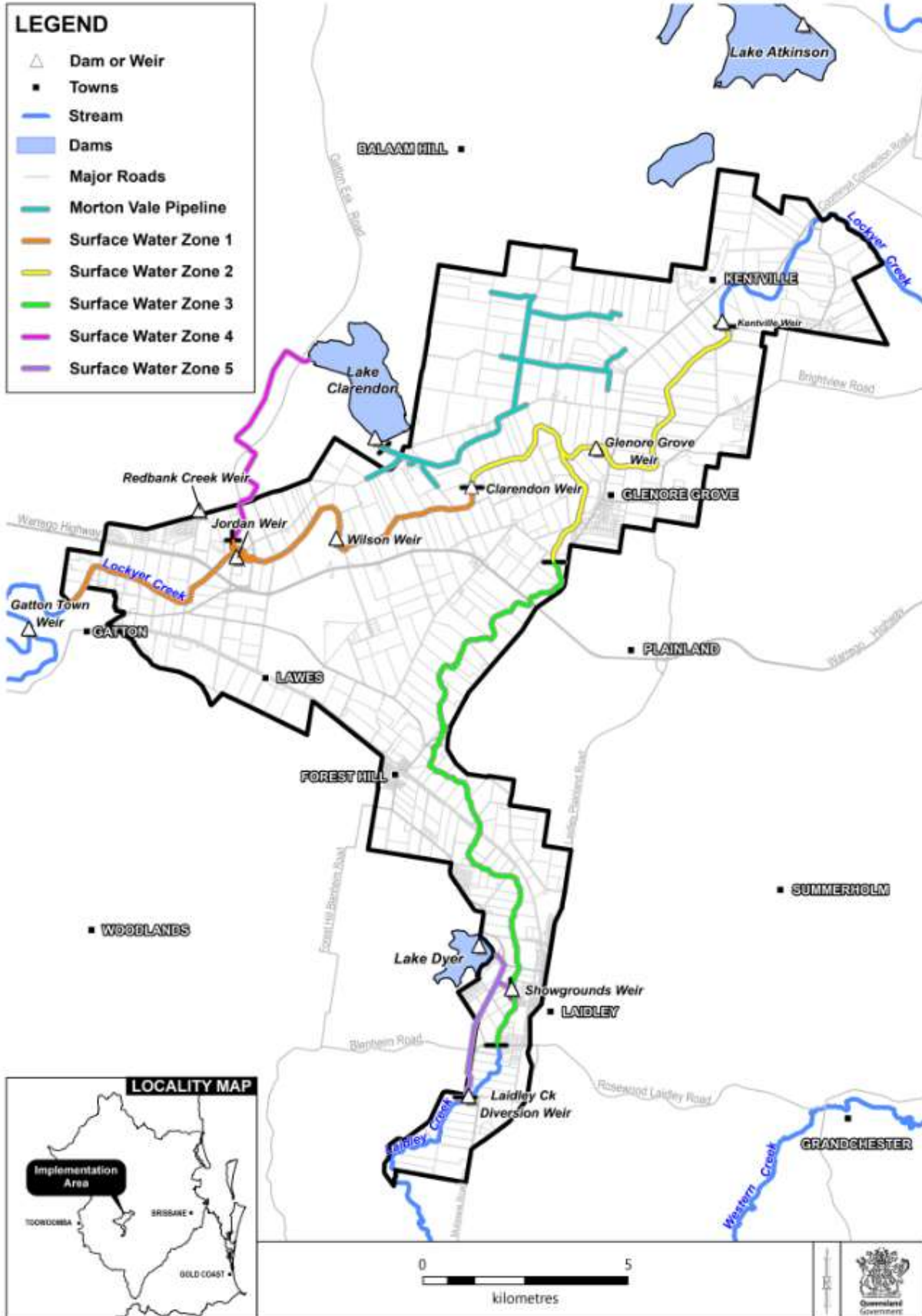
## Zone 8



## Zone 9



## Surface Water Zone Map:



## Ground Water Zone Map:

