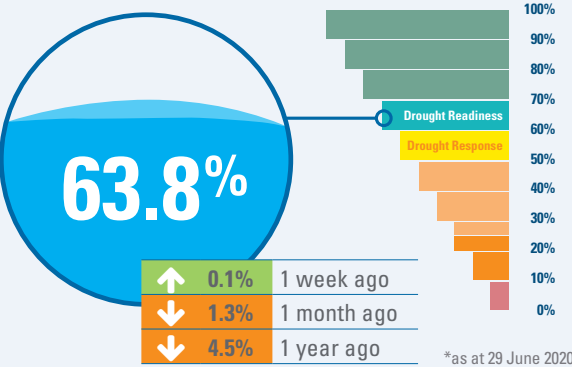


# WATER SECURITY STATUS REPORT

June 2020




## Water Grid capacity



## Dam storage levels

\*Data correct at 29 June 2020 – Dams selected are largest storages for North, South and Central areas. Visit the Seqwater website for more information.




**Baroon Pocket**

Full supply capacity **61,000 ML**  
Current capacity **55,922 ML**

↓ 0.3%	1 week ago
↓ 2.1%	1 month ago
↓ 7.0%	1 year ago

**STORAGE LEVEL**

**91.8%**




**North Pine (Lake Samsonvale)**

Full supply capacity **214,302 ML**  
Current capacity **131,424 ML**

↓ 0.5%	1 week ago
↓ 2.0%	1 month ago
↓ 7.8%	1 year ago

**STORAGE LEVEL**

**61.4%**



**Wivenhoe/Somerset**

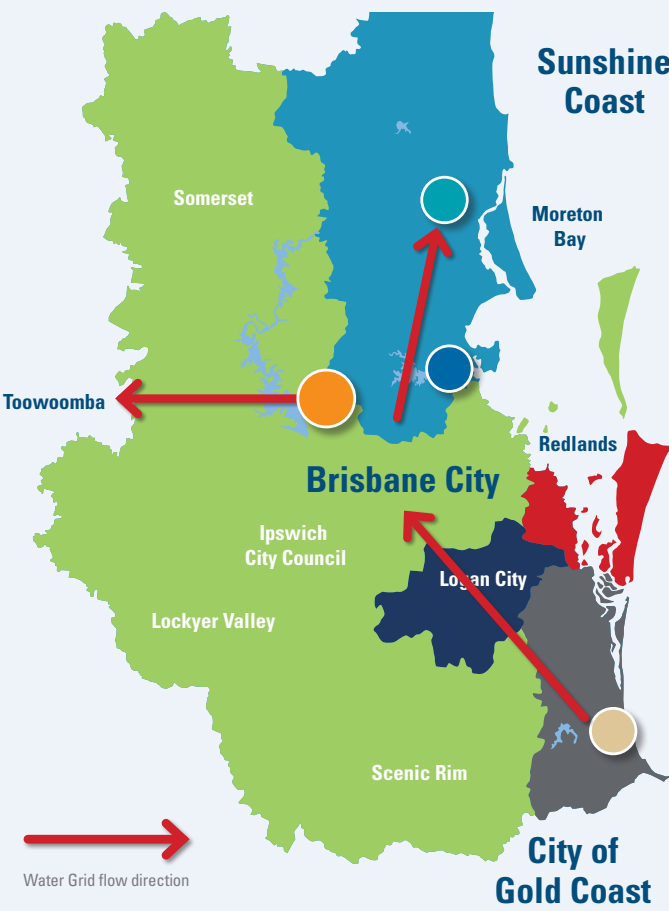
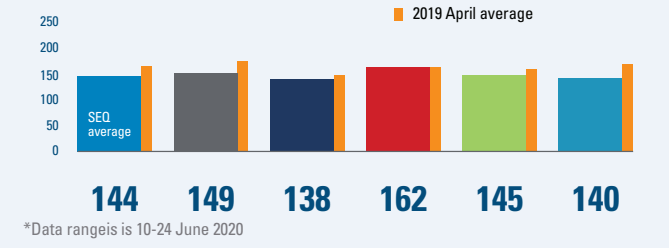
Full supply capacity **1,545,089 ML**  
Current capacity **862,956 ML**

↓ 0.2%	1 week ago
↓ 0.7%	1 month ago
↓ 5.0%	1 year ago

**STORAGE LEVEL**

**55.9%**

## Average daily residential consumption (L/Person)





**Hinze**

Full supply capacity **310,730 ML**  
Current capacity **293,173 ML**

↓ 0.5%	1 week ago
↓ 1.7%	1 month ago
↑ 1.1%	1 year ago

**STORAGE LEVEL**

**94.3%**

## Grid operations and overall water security position

The weather in South East Queensland (SEQ) for the June period was mostly dry with some periods of limited rainfall. Unfortunately, there was not enough rain in the right areas to make an impact on storage levels and the SEQ Water Grid storage has reduced further from 65.1% last month to currently sitting at 63.8%. Lake Wivenhoe—the region’s largest water storage—still sits below 50%.

The Seqwater daily average water usage has dropped significantly to 144 litres per day (LPD) from 171 LPD this time last month. Although water usage is typically lower in Winter months, the almost 30 LPD reduction in is the lowest water usage we have seen since September 2014. It is encouraging that this drop in use can be achieved in SEQ, particularly if the 150 LPD water demand target set for Drought Response at 60% occurs later in the year.

The Southern Regional Water Pipeline (SRWP) continues to operate in a northerly direction to assist supplementing Wivenhoe

supported by the Gold Coast Desalination Plant when required. The northern pipeline interconnector has switched to a northerly direction to support essential works in the North at Landers Shute. The pipeline from Wivenhoe Dam to Cressbrook Dam is also currently in operation to supplement Toowoomba’s water supply.

Combined storage levels this time last year were at 68.3% and if the same conditions experienced in 2019 were repeated this year, the level could reach the 60% Drought Response trigger by mid-September 2020. The BOM climate outlook for July to September is for hotter than average weather and higher than average rainfall.

While South East Queensland remains in drought preparedness phase Seqwater is preparing for the possibility of moving back into the drought response and the actions required in partnership with the five water service providers in SEQ to ensure a consistent and coordinated response.

## Water Grid storage

### Water Grid Storage actual drawdown to 25 June 2020, and projected draw down.

The Water Grid drawdown graph show historical storage data and a projected draw down if the same rate observed between January 2019 and December 2019 occurred in the corresponding months from June 2020 until May 2021.<sup>1</sup> The millennium drought is shown to compare drawdowns over an extended drought period (see figure 1).

Figure 1: Water Grid storage drawdowns.

1. This projected drawdown does not account for differences in demand and supply conditions in 2020, such as continued operation of the Gold Coast Desalination Plant.

End of month storage level assuming repeat of 2019 storage level decline:			
Jul-20	63.2%	Jan-21	51.9%
Aug-20	61.5%	Feb-21	49.6%
Sep-20	59.7%	Mar-21	46.9%
Oct-20	57.3%	Apr-21	46.2%
Nov-20	55.0%	May-21	45.6%
Dec-20	52.4%		

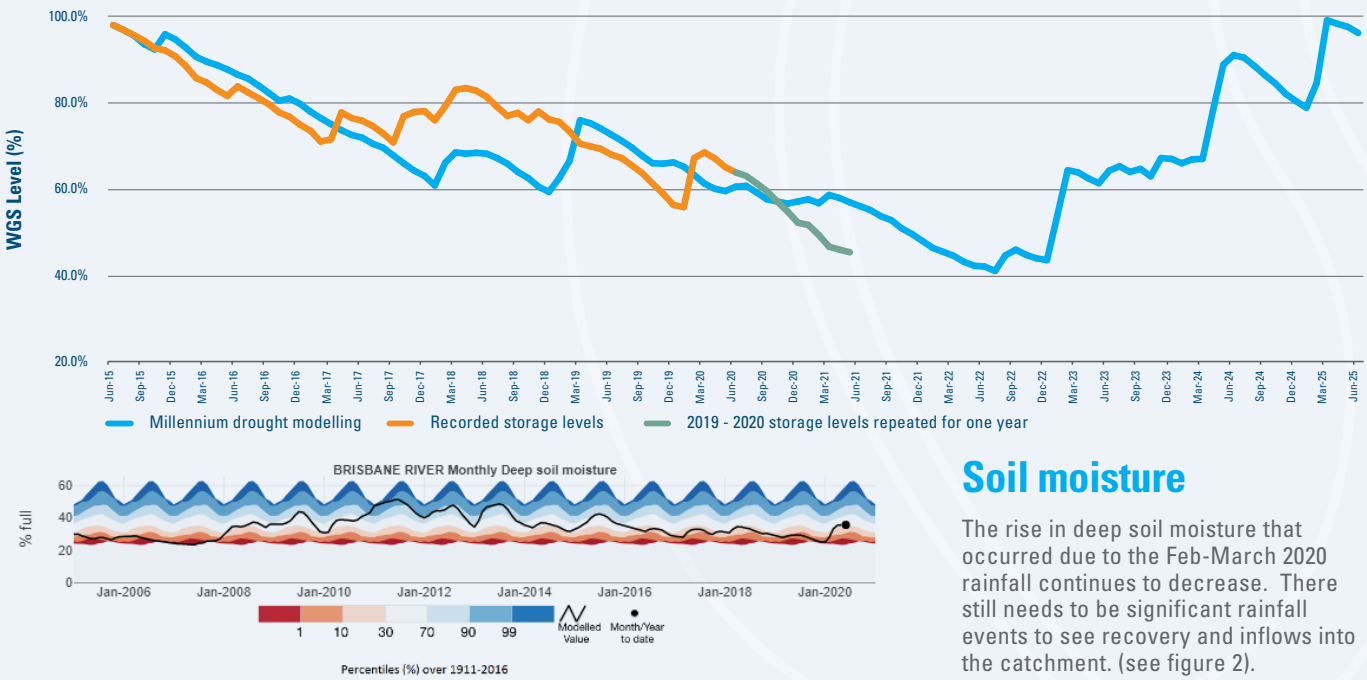


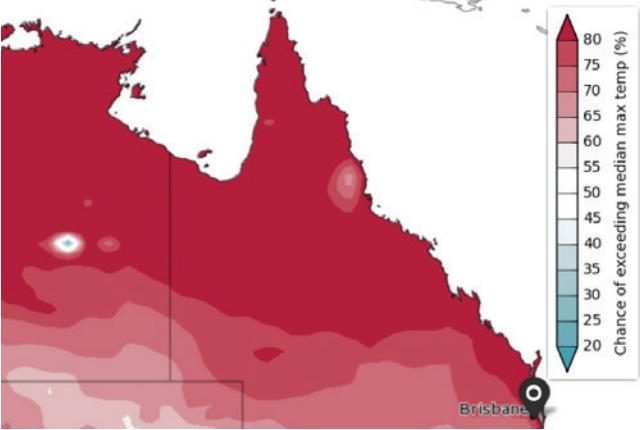
Figure 2: Brisbane River catchment monthly deep soil moisture – modelled estimate to May 2020 (source Bureau of Meteorology AWRA-L)



Weather forecasts

Temperature

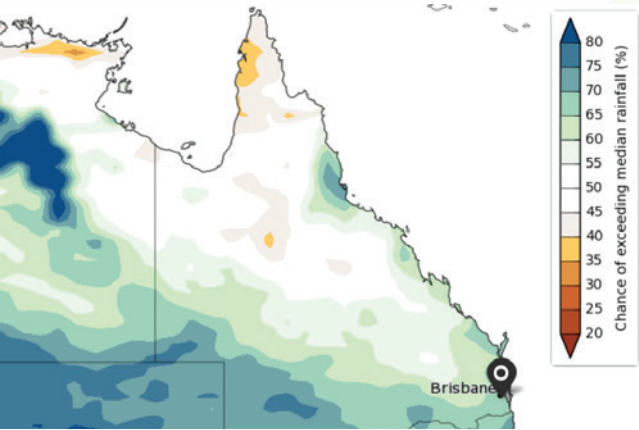
Median maximum temperature for the Brisbane area is forecast at 21.1°C. The chance of exceeding the median temperature is likely with an over 75% probability. The past accuracy of these predictions has been classed as “very low”.



Source: <http://www.bom.gov.au/climate/outlooks/#/temperature/maximum/median/monthly/0>

Rainfall

Median rainfall for the Brisbane area in July is forecast at 27mm. There is a likely chance of exceeding the median with a 65% - 70% probability. The past accuracy of these predictions has been classed as “low”.



Source: <http://www.bom.gov.au/climate/outlooks/#/rainfall/median/monthly/0>

Off-grid community drought status

The SEQ Water Grid allows us to move treated drinking water around the region. Off-grid communities are not connected to the SEQ Water Grid.

This table has been updated as at 29 June 2020.

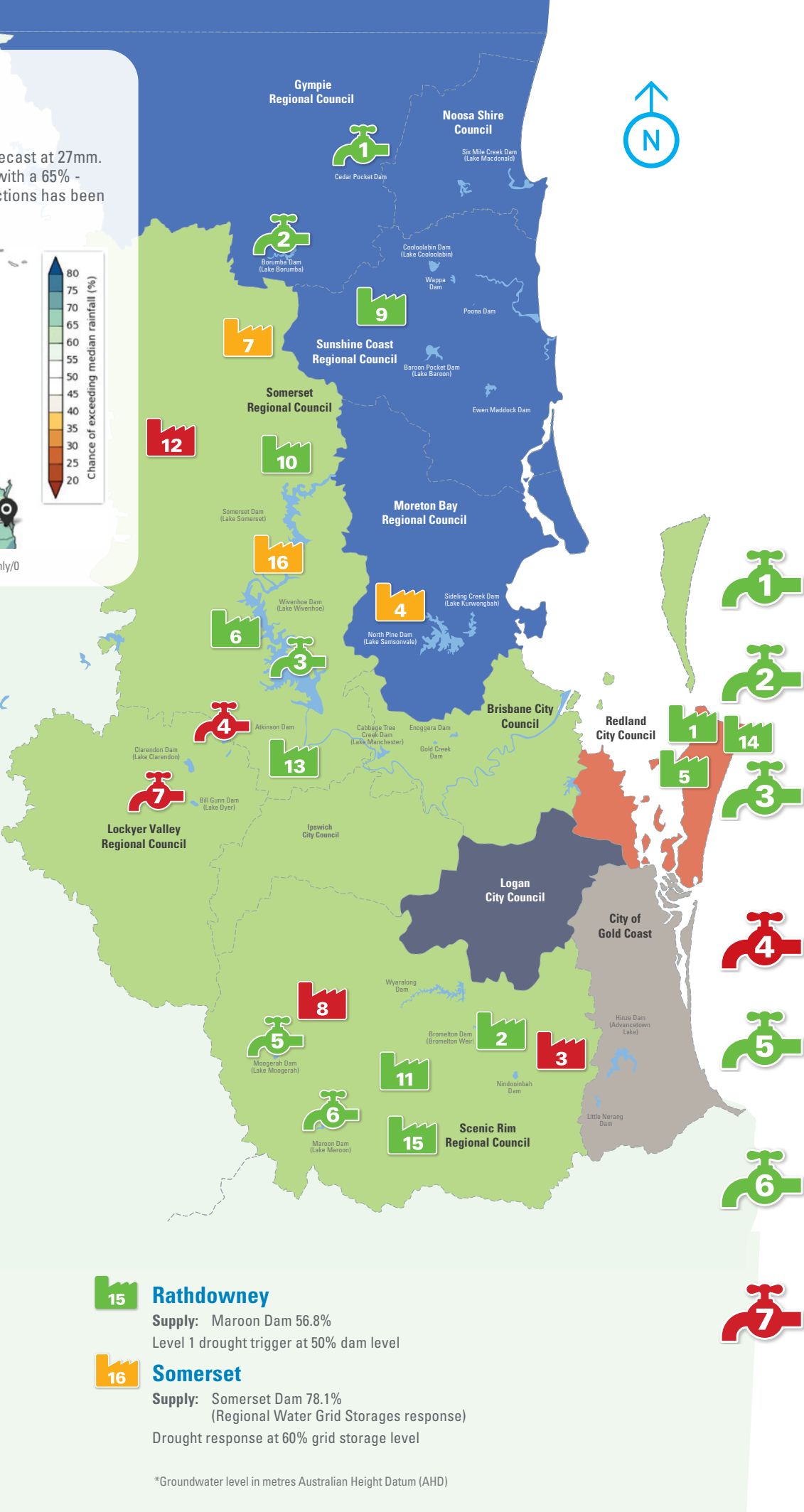
- Low probability of reaching drought trigger in next 3 months
- Medium probability of reaching drought trigger in next 3 months
- High probability of reaching drought trigger in next 3 months

- Amity Point**  
**Supply:** North Stradbroke Island groundwater  
Standing water level 16.582 m AHD  
Level 1 drought trigger at 15 m AHD
- Beaudesert**  
**Supply:** Maroon Dam 56.8%  
Level 1 drought trigger at 50% dam level
- Canungra**  
**Level 1 drought response in effect as of 4/6/20**  
**Supply:** Canungra Creek  
Stream flow ~17.14 ML/day  
Level 1b drought trigger at <1 ML/day flow
- Dayboro**  
**Supply:** groundwater  
Well No. 1 standing level >RL 41.6 m AHD  
Level 1 drought trigger at RL 40.7 m AHD
- Dunwich**  
**Supply:** North Stradbroke Island groundwater  
Standing water level 16.582 m AHD  
Level 1 drought trigger at 15 m AHD
- Esk**  
**Supply:** Wivenhoe Dam 48.6%  
(Regional Water Grid Storages response)  
Drought reponse at 60% grid storage level
- Jimna**  
**Level 1 drought response in effect as of 6/5/20**  
**Supply:** Water has ceased flowing over the weir  
water being carted from Kilcoy  
Level 3 drought trigger — the Big Hole is 8m below normal operating level

- Kalbar (Boonah, Aratula and Mount Alford)**  
**Level 1 drought response in effect as of 9/9/19**  
**Supply:** Moogerah Dam 28.4%  
Level 2 drought trigger at 25% dam level
- Kenilworth**  
**Supply:** Wells near the Mary River  
Bellbird Creek flow ~18.29 ML/day  
Level 1 drought trigger at 0 ML/day flow
- Kilcoy**  
**Supply:** Somerset Dam 78.1%  
(Regional Water Grid Storages response)  
Drought response at 60% grid storage level
- Kooralbyn**  
**Supply:** Maroon Dam 56.8%  
Level 1 drought trigger at 50% dam level
- Linville**  
**Supply:** Brisbane River at Linville — 1.71 ML/day  
Level 1 drought trigger - water treatment plant unable to meet demand
- Lowood**  
**Supply:** Wivenhoe Dam 48.6%  
(Regional Water Grid Storages response)  
Drought response at 60% grid storage level
- Point Lookout**  
**Supply:** North Stradbroke Island groundwater  
Standing water level 16.582 m AHD  
Level 1 drought trigger at 15 m AHD

- Rathdowney**  
**Supply:** Maroon Dam 56.8%  
Level 1 drought trigger at 50% dam level
- Somerset**  
**Supply:** Somerset Dam 78.1%  
(Regional Water Grid Storages response)  
Drought response at 60% grid storage level

\*Groundwater level in metres Australian Height Datum (AHD)



Water Supply Scheme status

Seqwater supplies water to rural landholders and businesses that are licensed to take water from dams and waterways via Water Supply Schemes. The amount of water that can be extracted by licensed irrigators varies according to local water conditions. In times of drought or low flows, irrigation entitlements may be restricted or suspended.

This data has been updated as at 29 June 2020.

- 100% allocated
- < 100% allocated
- 0% allocated

- Cedar Pocket Water Supply Scheme**  
Cedar Pocket Dam currently 83.9% (down 2.8% from last month)  
**Announced allocations:** Medium Priority 100%
- Mary Valley Water Supply Scheme**  
Borumba Dam currently 94.4% (down 2.4% from last month)  
**Announced allocations:** Medium Priority 100%  
(also supplies high priority)

- Central Brisbane Water Supply Scheme**  
Wivenhoe Dam/Somerset Dam currently 55.9%  
(down 0.7% from last month)  
**Announced allocations:** Medium Priority 100%  
(also supplies high priority)  
*\*Proposed amendments to water sharing rules by 1 July.*

- Lower Lockyer Water Supply Scheme**  
Atkinson Dam currently 5.4% (no change from last month)  
**Announced allocations:** Medium Priority 0%

- Warri Valley Water Supply Scheme**  
Moogerah Dam currently 28.4% (down 3.3% from last month)  
**Announced allocations:** Medium Priority 100%  
(also supplies high priority)  
*\*Proposed amendments to water sharing rules by 1 July.*

- Logan River Water Supply Scheme**  
Maroon Dam currently 56.8% (down 1.3% from last month)  
**Announced allocations:** Medium Priority 100%  
(also supplies high priority)  
*\*Proposed amendments to water sharing rules by 1 July.*

- Central Lockyer Water Supply Scheme**  
Clarendon Dam & Bill Gunn Dam currently 2.32%  
(1.52% increase from last month)  
**Announced allocation (surface water)** Morton Vale 0%, Medium Priority 0% (all zones)  
**Announced allocation (ground water)** TBD