



Lake Macdonald Dam Improvement Project

Quarterly Compliance
and Monitoring
Summary Report for
the Coordinator-
General

Document Number: LMDIP-10000-GNL-ENV-REP-00004 LMDIP Quarterly Compliance Monitoring Report for the Coordinator General

Reporting period: 1 March 2026 – 31 May 2026

Revision 01 | June 2026

Distribution list

Name	Position
Luke Anderson	Clients Representative
Andy O'Driscoll	Project Manager
As determined by the Project Manager	Project Control Group
As required	Project Personnel

The controlled master version of this document is available for distribution as appropriate and maintained on the document management system being used on the project. All circulated hard copies of this document are deemed to be uncontrolled.

Document control

Draft issues of this document are identified as Revision A, B, C etc. Upon initial issue (generally Contract Award) this will be changed to a sequential number commencing at Revision 0. Revision numbers will continue at Rev. 1, 2 etc.

Reviewer					
Rev	Date	Prepared By	Reviewed By	Approved By	Remarks
1	26/06/2026	S. Orchard	N. Carruthers	L. Anderson	

Version No:	Version Date:	Document title	Seqwater Document Number	Page:
1	16/06/2026	Quarterly Compliance and Monitoring Summary Report for the Coordinator-General	LMDIP-10000-GNL-ENV-REP-00004	2 of 84

Distribution list	2
Document control	2
1. Executive Summary	7
2. Definition and Abbreviations	7
3. Introduction	8
3.1. Background.....	8
3.1.1. Scope of this report.....	8
3.2. Reporting Period.....	9
4. Previous Period Evaluation of Compliance with the SEMP	10
5. Summary of Monitoring Data	10
6. Weather	25
6.1. Rainfall	25
6.2. Temperature	25
6.3. Windspeed & Wind direction.....	27
6.4. Wind direction	29
7. Cultural Heritage	30
8. Incidents	31
9. Complaints	32
10. Summary & Conclusion	33
Appendix A - Monitoring & Compliance Summary	34
1. Water	34
1.1. Water Quantity	34
1.2. Water Quality.....	35
1.2.1. Upstream Monitoring.....	38
1.2.2. Downstream Monitoring	39
1.2.3. Ammonia, Nitrate and Phosphate water quality trends over time	42
2. SQP Habitat monitoring	45
3. Flora and Fauna (Aquatic)	47
3.1. Fish community monitoring.....	48
3.1.1. <i>Small bodied fish communities</i>	48
3.1.2. <i>Large bodied fish communities</i>	48
3.1.3. <i>Fish communities over time</i>	50
3.2. Fish Condition	52
3.3. Turtle monitoring.....	53
3.4. Platypus monitoring	54
3.4.1. <i>eDNA sampling and analysis</i>	54

Version No:	Version Date:	Document title	Seqwater Document Number	Page:
1	16/06/2026	Quarterly Compliance and Monitoring Summary Report for the Coordinator-General	LMDIP-10000-GNL-ENV-REP-00004	3 of 84

3.4.2.	<i>Active platypus burrow searches</i>	54
3.4.3.	<i>Camera trapping</i>	54
3.5.	Fish salvage	55
3.5.1.	<i>Stilling Basin Fish Salvage</i>	55
3.5.2.	<i>Spillway fish salvage</i>	56
3.5.3.	<i>Fish salvage conclusion</i>	57
3.6.	Aquatic plant cover	58
3.7.	Riffle habitats	58
3.8.	Bank erosion	58
3.9.	Instream woody habitat	58
3.10.	Bed substrata	59
4.	Flora & Fauna (terrestrial)	59
5.	Traffic	59
5.1.	Traffic count data	59
6.	Noise & Vibration	60
6.1.	Noise	60
6.1.1.	Noise Objectives	60
6.1.2.	Noise Monitoring Locations	60
6.2.	Noise Monitoring Results – Standard Construction Works	62
6.3.	Noise Monitoring Results – Spillway Demolition	63
6.4.	Vibration	65
7.	Dust and Air Quality	67
7.1.	PM ₁₀ Monitoring	68
7.2.	Site Hive Dust Monitor	69
7.3.	Dust Deposition Gauge	71
8.	Waste Resource Use	72
9.	Attended Noise Monitoring Results	74
9.1.	Appendix 1: Attended Monitoring Results Outside of Demolition	74
9.2.	Appendix 2: Attended Monitoring Results During Demolition	76

Version No:	Version Date:	Document title	Seqwater Document Number	Page:
1	16/06/2026	Quarterly Compliance and Monitoring Summary Report for the Coordinator-General	LMDIP-10000-GNL-ENV-REP-00004	4 of 84

Figures

Figure 1: LMDIP Monthly Rainfall compared to the Tewantin long term average.....	25
Figure 2: LMDIP Weekly Temperature Trace results	26
Figure 3: LMDIP Average Wind Speed.....	28
Figure 4: Wind Rose – 01/03/2026 to 31/06/2026	29
Figure 5: Comparing monthly average flows against the 10yr average – Cooran Gauging Station 138107B	34
Figure 6: Discharge to Six Mile Creek (Siphons and Environmental Flows).	35
Figure 7: Water Quality Monitoring Locations	37
Figure 8: Number of exceedances of ammonia, nitrate and phosphate at the main body of the impoundment of Lake Macdonald (I1, I2 and I3).....	43
Figure 9: Number of exceedances of ammonia, nitrate and phosphate at the upper reaches of Lake Macdonald at sites I4 and I5	43
Figure 10: Number of exceedances of ammonia, nitrate and phosphate downstream at sites DS01, DS02, DS03 and DS04. 44	
Figure 11: SQP Quarterly Habitat survey sites.....	45
Figure 12: Platypus detected on Camera 5 in Cooroy Creek.....	55
Figure 13: Noise and Vibration Monitoring Locations.....	61
Figure 14: Average hourly LAeq by time of day during work hours (6:30am-6:30pm), during standard work-days (Monday to Saturday) and non-work days (Sunday).	62
Figure 15: Average LAeq - 1hr between the hours 6:30am-6:30pm during standard work days (Monday to Saturday) and non-work days (Sunday).....	63
Figure 16: Site Hive LAeq Over the Demolition Period (1-Hour Intervals, daily averages).....	64
Figure 17: Comparison of the LA _{eq} average (1-Hour intervals) during the demolition period and outside the demolition period.....	65
Figure 18: Air Quality Monitoring Locations (including PM ₁₀ Monitor).....	68
Figure 19: LMDIP PM ₁₀ 24-Hour Average.....	69
Figure 20: LMDIP Site Hive PM ₁₀ Levels (24-Hour Average).....	70

Version No:	Version Date:	Document title	Seqwater Document Number	Page:
1	16/06/2026	Quarterly Compliance and Monitoring Summary Report for the Coordinator-General	LMDIP-10000-GNL-ENV-REP-00004	5 of 84

Tables

Table 1: Definitions and Abbreviations	7
Table 2: Activities Summary	9
Table 3: Summary of project monitoring requirements	11
Table 4: LMDIP Incident summary	31
Table 5: Water Quality Objectives (F&FDMP)	36
Table 6: Upstream Water Quality Summary (Sites I1 – I3: Main body of the impoundment)	38
Table 7: Upstream Water Quality Summary (Sites I4 – I5: Upper reaches of the lake arms)	39
Table 8: Downstream Water Quality Summary (DS01, DS02, DS03, DS04).....	40
Table 9: Downstream water quality summary for the stilling basin (PP01)	41
Table 10: Habitat Triggers	46
Table 11: Mean Water Quality results from each habitat site	47
Table 12: Aquatic Fauna and Salvage Program of Works Summary.....	47
Table 13: Fish community results from the current monitoring event	49
Table 14: Fish Communities Over Time	51
Table 15: Mean, standard error (S.E.), minimum (min.) and maximum (max) length, weight and condition of fish captured from Lake Macdonald. Weight data on bony bream focussed on larger fish >100mm.....	53
Table 16: Summary of fish salvage from stilling basin	56
Table 17: Summary of fish salvage from spillway	57
Table 18: Acoustic Quality Objectives	60
Table 19: Average noise levels recorded during the spillway demolition	63
Table 20: Vibration results above human comfort level	66
Table 21: Dust Deposition Gauge Results	71
Table 22: Construction and Demolition Waste Summary Report	73

Version No:	Version Date:	Document title	Seqwater Document Number	Page:
1	16/06/2026	Quarterly Compliance and Monitoring Summary Report for the Coordinator-General	LMDIP-10000-GNL-ENV-REP-00004	6 of 84

1. Executive Summary

This Quarterly Compliance and Monitoring Summary Report has been produced for Project Works undertaken on site for 2 March 2026 to 29 May 2026 for the Lake Macdonald Dam Improvement Project (LMDIP). The report addresses the obligations outlined in the Coordinator-General’s change report – Construction (April 2025) and the Office of the Coordinator-General (OCG) approved Project’s Site Environmental Management Plan (SEMP).

This report in line with the Coordinator-General’s Imposed Condition 6 for quarterly monitoring and reporting. A summary of the monitoring obligation compliance is provided, with the detailed data and analysis of the results contained in Appendix A.

2. Definition and Abbreviations

Definitions and abbreviations to be applied to the Quarterly Compliance and Monitoring Summary Report for the Coordinator-General are listed below in Table 1.

Table 1. Definitions and Abbreviations

Term/Abbreviation	Definition
Client (Principal)	The party to whom John Holland is contracted for a Project. For this project the Client is Seqwater
Client’s Representative	The person appointed by the Client to perform the duties of the "Superintendent" as defined in the contract. For this project the Client Representative is Luke Anderson.
CGCR	Coordinator General Change Report
EMP	Environmental Management Plan
Environmental Management Subplan	Aspect-specific Subplan to the EMP
ESCP	Erosion & Sediment Control Plan
F&FDMP	Flora & Fauna Dewatering Management Plan
JH	John Holland as the organisation responsible for the total performance of the works under the Contract.
LMDIP	Lake Macdonald Dam Improvement Project
NCR	Non-Conformance Report
Plan	A document setting out the specific practices, resources, activities and responsibilities relevant to a particular project or contract.
SEMP	Site Environmental Management Plan
Subcontractor	Any company, body or person who is contracted to John Holland for the purpose of supplying plant and/or services. Categories such as manufacturer, fabricator and supplier are considered Subcontractors.

SQP	Suitably Qualified Professional
-----	---------------------------------

3. Introduction

3.1. Background

Lake Macdonald Dam is one of several dams across Southeast Queensland to be upgraded as part of Seqwater’s Dam Improvement Program. Seqwater is responsible for the ongoing safety of the dam and with a growing population downstream, there are more people at risk in the extremely unlikely event of a dam failure.

The Lake Macdonald Dam Improvement Project will be the first major upgrade of the dam since it was built in 1965, and the walls were raised in 1980. The upgrade is a critical project in Seqwater’s Dam Improvement Program and must result in a dam structure compliant with the legislative requirements of the Water Supply (Safety and Reliability) Act 2018 and the Queensland Dam Safety Guidelines.

While the upgrade will demolish the existing dam, delivering a new dam in its place, critical to its success will be the effective management of creek inflows, sensitive aquatic fauna and the interfacing local community. This important upgrade and spillway and embankment reconstruction will not only provide essential earthquake and flood protection but improve water supply certainty for the entire Sunshine Coast regional network.

The Coordinator-General has imposed conditions on the Project that apply throughout the design, construction, commissioning and operation phases. These are referred to as the Imposed Conditions. In addition, the Coordinator-General has approved the Project’s SEMP which outlines the environmental management framework for the Project. The SEMP includes environmental outcomes and performance criteria which must be achieved for the Project.

3.1.1. Scope of this report

Imposed condition 6 requires the proponent (Seqwater) to report on compliance with the approved management plans on a quarterly basis. Seqwater has delegated this requirement to the John Holland (JH) as the contractor. This report is intended to satisfy this requirement. Condition 6 is provided below for reference.

Condition 6. Monitoring and reporting

The proponent must prepare a report every 3 months that summarises compliance and monitoring results for project activities and complaints.

- (a) *The reports must include the following for the reporting period:*
 - (i) *an evaluation of compliance with the SEMP*
 - (ii) *monitoring data required by the imposed conditions included in Appendix A for the period and an interpretation of the results*
 - (iii) *details of any exceedances, environmental incident/s during the reporting period, including a description of the incident, resulting effects, corrective actions (including site remediation activities), revised activity practices (including updates to the SEMP) to prevent a recurrence, responsibility and timing*
 - (iv) *details of complaints received and outcomes of complaints resolution process, including:*

Version No:	Version Date:	Document title	Seqwater Document Number	Page:
1	16/06/2026	Quarterly Compliance and Monitoring Summary Report for the Coordinator-General	LMDIP-10000-GNL-ENV-REP-00004	8 of 84

- (A) corrective actions or additional controls taken as a result of the complaint and
- (B) the effectiveness of these corrective actions or additional controls.

The reports must be provided to the Coordinator-General for information and also be made available on the project website within 20 business days of the end of the three-month period to which the report relates and continue to be available on the project website for the duration of the project.

3.2. Reporting Period

This report covers the construction period from **1 March 2026 to 31 May 2026**. The project activities undertaken in the reporting period and associated timelines are highlighted below in Table 2. It is noted that this period also covers project demolition works which was planned across 15 continuous day and night shifts in April and was successfully completed ahead of schedule.

Table 2: Activities Summary

Project Component	Project Works	Affected Period
General Site Operations	<ul style="list-style-type: none"> • General earth works • Stockpile operations and management • Import rock fill • Export unsuitable material • Mobile batch plant set up and commissioning • Geotechnical investigations • Upstream sheet pile installation working platform • Secant piling 	<ul style="list-style-type: none"> • 1 March 2026 to 31 May 2026
Completion of Cofferdam	<ul style="list-style-type: none"> • Rock placement • Rock bag installation • Stilling basin dewatering 	<ul style="list-style-type: none"> • 1 March 2026 to 31 May 2026
Siphon operation	<ul style="list-style-type: none"> • Maintaining dam levels at ~RL92.8 • Intake screen inspection 	<ul style="list-style-type: none"> • 1 March 2026 to 31 May 2026
Demolition of the spillway and embankment	<ul style="list-style-type: none"> • 24/7 construction works for demolition • Demolition of spillway wall with excavators and rock hammers • Moxie haulage demolition material for stockpiling onsite • Removal of right- and left-hand earthen embankments • Rock breaking of concrete • Placement of rock in working platform from onsite stockpiles • Concreting in working platform • Stilling basin management and water sampling • Fauna spotter catcher present for demolition works 	<ul style="list-style-type: none"> • 10 April 2026 to 24 April 2026

Version No:	Version Date:	Document title	Seqwater Document Number	Page:
1	16/06/2026	Quarterly Compliance and Monitoring Summary Report for the Coordinator-General	LMDIP-10000-GNL-ENV-REP-00004	9 of 84

4. Previous Period Evaluation of Compliance with the SEMP

As per Schedule 2 - Condition 7 of the CGCR 2025 a third-party audit of the SEMP was carried out within 3 months from the commencement of project activities. This audit was completed in August 2025 and all corrective actions have since been closed out. These audits will now revert to an annual timeframe with the next SEMP Compliance Audit scheduled for August 2026.

5. Summary of Monitoring Data

Monitoring was undertaken during the audit period in accordance with the requirements of the SEMP for obligations within the Flora & Fauna Dewatering Management Plan (F&FDMP) and the following LMDIP Sub plans:

1. Stormwater Management
2. Flora and Fauna (Dewatering)
3. Flora and Fauna (Terrestrial)
4. Noise and Vibration
5. Dust and Air Quality
6. Hazardous Substances
7. Waste Resource Use
8. Weed Management

These LMDIP monitoring obligations are summarised in Table 3 below, outlining the compliance results with each requirement and where additional information can be found in the report. Additional data and analysis of monitoring and compliance for each obligation are detailed further in Appendix A of this report.

Version No:	Version Date:	Document title	Seqwater Document Number	Page:
1	16/06/2026	Quarterly Compliance and Monitoring Summary Report for the Coordinator-General	LMDIP-10000-GNL-ENV-REP-00004	10 of 84

Lake Macdonald Dam Improvement Project
Quarterly Compliance and Monitoring Summary Report for the Coordinator-General

Table 3: Summary of project monitoring requirements

Monitoring obligation	Previous quarter compliance met (Y/N)	Compliance met (Y/N)	Comments / Evidence of compliance	Ongoing Actions
LMDIP-05829-GNL-ENV-MPL-00002 - Stormwater Management Plan				
Prior to discharge of any water to Six Mile Creek, testing of the water to be discharged, DS01, and I1 is required. Water to be discharged to meet discharge criteria	Y	Y	Dewatering of the stilling basin and tailwater spillway pool has occurred with all water tested and discharged under a permit to dewater within discharge criteria only.	Nil
Water quality sampling within the lake and downstream of the construction site will be undertaken and analysed for the parameters defined in <i>Appendix A Impoundment and Downstream Water Quality Monitoring</i>	Y	Y	Monitoring completed as per the schedule outlined in Appendix A of the Stormwater Management Plan. Refer to Appendix A – Section 1.2 of this report for further details	
Weekly inspection of erosion and stormwater diversion controls will be undertaken and documented visual inspections of the construction site during and after rainfall to ensure that mitigation measures are in place and stormwater diversion control measures are in working order	Y	Y	Weekly site inspections as well as pre and post rainfall event inspections occurring. ESCs across the site are as per the approved ESCP performing as intended.	
The volume of discharges from the site via pumps, siphons or gravity will be recorded	Y	Y	Seqwater operations keep records of how many siphons are running and the duration of operation. See Appendix A Section 1.1.	
Levels in the borrow pit and treatment tanks are to be monitored	Y	Y	Borrow pit ERA activated. No material excavated as yet	Area inspected weekly as part of sitewide ESCP inspections. Site specific ESCP to be prepared prior to

Version No:	Version Date:	Document title	Seqwater Document Number	Page:
1	16/06/2026	Quarterly Compliance and Monitoring Summary Report for the Coordinator-General	LMDIP-10000-GNL-ENV-REP-00004	11 of 84

Lake Macdonald Dam Improvement Project
Quarterly Compliance and Monitoring Summary Report for the Coordinator-General

Monitoring obligation	Previous quarter compliance met (Y/N)	Compliance met (Y/N)	Comments / Evidence of compliance	Ongoing Actions
				borrow pit operations starting
Monitoring of turbidity at monitoring locations DS01 and PP01	Y	Y	DS01 live monitor damaged in flood event in March and sent for repair. Daily spot samples collected while monitor being repaired. PP01 daily water quality checks and weekly lab samples collected Refer to Appendix A - Monitoring & Compliance Summary – Section 1.2.2 (Table 8 and Table 9) of this report for further details	Daily spot checks whilst continuous logger was repaired.
LMDIP-05327-GNL-ENV-MPL-00003 - Flora and Fauna (Dewatering) Management Plan				
Water Quality in Lake Macdonald - During drawdown and construction:				
Conduct monitoring at least daily of temperature, pH, dissolved oxygen, EC, and turbidity at or near monitoring location I1	Y	Y	I1 live monitor installed and collecting data. Refer to Appendix A – - Monitoring & Compliance Summary - Section 1.2.1 of this report for further details	
Daily visual observations for oil slicks in the lake immediately upstream of the works	Y	Y	No instances of oil slicks on the water Monitoring included in the daily checklist.	
Daily monitoring of water quality for pH, dissolved oxygen and turbidity in the stilling basin (once constructed).	Y	Y	PP01 water quality checks and weekly lab samples collected up until April. Water sample frequency reduced after demolition post fish salvage and a lack of water in stilling basin to take suitable samples. Refer to Table 9.	Monitoring stilling basin with daily visual inspections.

Version No:	Version Date:	Document title	Seqwater Document Number	Page:
1	16/06/2026	Quarterly Compliance and Monitoring Summary Report for the Coordinator-General	LMDIP-10000-GNL-ENV-REP-00004	12 of 84

Lake Macdonald Dam Improvement Project
Quarterly Compliance and Monitoring Summary Report for the Coordinator-General

Monitoring obligation	Previous quarter compliance met (Y/N)	Compliance met (Y/N)	Comments / Evidence of compliance	Ongoing Actions
Fortnightly monitoring of COD, suspended solids, nitrate, ammonia, total phosphorus and total recoverable hydrocarbons (laboratory analysed)	Y	Y	Monitoring completed as per the schedule outlined in LMDIP-05327-GNL-ENV-MPL-00003. Refer to Appendix A – Monitoring & Compliance Summary - Section 1.2 Table 6 and Table 7 incorporates any exceedances from this testing	
Weekly monitoring of COD, suspended solids, nitrate, ammonia, total phosphorus and total recoverable hydrocarbons (laboratory analysed) within the stilling basin.	Y	Y	Weekly laboratory monitoring of COD, suspended solids, nitrate, ammonia, total phosphorus, and total recoverable hydrocarbons was initially undertaken weekly. Following consultation with the aquatic ecologist and updating the F&FDMP, laboratory sampling was ceased in April 2026. Testing is now limited to post-rainfall events and prior to any dewatering events. Due to the lack of any aquatic fauna in the stilling basin, along with a constant flush of fresh lake water migrating through the UCD – this body of water is considered very low risk.	Daily visual monitoring of the basin
Water Quality in Six Mile Creek - During drawdown and construction:				
Real-time monitoring of temperature, pH, dissolved oxygen, EC, and turbidity at downstream monitoring site DS01. Where real-time monitoring is unavailable (due to system failures or similar) daily required monitoring to supplement until such time that real-time monitoring can be brought back online	Y	Y	Refer to Appendix A – - Monitoring & Compliance Summary - Section 1.2.2 of this report for further details	When low DO% is detected send fresh flushes of water downstream using the siphon whenever lake capacity allows.
Monthly monitoring of nutrients (nitrate, ammonia and total phosphorus), suspended solids, and visual	Y	Y	Monitoring completed as per the schedule outlined in LMDIP-05327-GNL-ENV-MPL-00003.	

Version No:	Version Date:	Document title	Seqwater Document Number	Page:
1	16/06/2026	Quarterly Compliance and Monitoring Summary Report for the Coordinator-General	LMDIP-10000-GNL-ENV-REP-00004	13 of 84

Lake Macdonald Dam Improvement Project
Quarterly Compliance and Monitoring Summary Report for the Coordinator-General

Monitoring obligation	Previous quarter compliance met (Y/N)	Compliance met (Y/N)	Comments / Evidence of compliance	Ongoing Actions
observations for oil slicks, at the downstream monitoring sites DS01, DS02 and DS04			Refer to Appendix A - - Monitoring & Compliance Summary - Section 1.2 Table 7 incorporates any exceedances from this testing.	
Weekly monitoring of temperature, pH, dissolved oxygen, EC, and turbidity at the downstream sites DS01 and DS04	Y	Y	Monitoring completed as per the schedule outlined in LMDIP-05327-GNL-ENV-MPL-00003. Refer to Appendix A – Section 1.2.2 of this report for further details	
Weekly monitoring of temperature, pH, dissolved oxygen, EC, and turbidity at the upstream control sites SMCUS01 and CU02	N	N	Monitoring at these sites currently cannot be conducted due to landowner/access issues and lack of water due to lake lowering. The F&FDMP has been updated to reflect this and nominated locations I4 and I5 as suitable substitutes.	
Monthly monitoring of nutrients (nitrate, ammonia and total phosphorus), suspended solids, temperature, pH, dissolved oxygen, EC and turbidity, and visual observations for oil slicks at the upstream control sites SMCUS01 and CU02.	N	N	Monitoring at these sites currently cannot be conducted due to landowner/access issues and lack of water due to lake lowering. The F&FDMP has been updated to reflect this and nominated locations I4 and I5 as suitable substitutes.	
<i>Erosion & Sediment Control in Lake Macdonald</i>				
Weekly inspection of sediment and erosion control structures and measures.	Y	Y	Occurring weekly through Environmental Site Inspections	
Daily monitoring of turbidity in Lake Macdonald	Y	Y	Via live readings from monitor at I1, Refer to Appendix A – Monitoring & Compliance Summary - Section 1.2.1 of this report for further details	

Version No:	Version Date:	Document title	Seqwater Document Number	Page:
1	16/06/2026	Quarterly Compliance and Monitoring Summary Report for the Coordinator-General	LMDIP-10000-GNL-ENV-REP-00004	14 of 84

Lake Macdonald Dam Improvement Project
Quarterly Compliance and Monitoring Summary Report for the Coordinator-General

Monitoring obligation	Previous quarter compliance met (Y/N)	Compliance met (Y/N)	Comments / Evidence of compliance	Ongoing Actions
Quarterly visual monitoring of any potential erosion & sediment issues occurring throughout the lake edges. These inspections would be incorporated into the monthly fauna inspections. This could be substituted by drone LiDAR surveys. The first survey represents the baseline.	Y	Y	Baseline drone survey assessment was carried out in June 2025 directly after lake drawdown. Being conducted through the quarterly aquatic habitat survey and erosion assessments. Monthly lake perimeter inspections conducted by Seqwater Rangers. Refer to Appendix A – Monitoring & Compliance Summary - Section 3.8 of this report for further details	
Erosion & Sediment Control in Six Mile Creek				
Undertake construction phase monitoring at the downstream monitoring sites and upstream control sites, as outlined in Appendix F Habitat Monitoring Program (F&FDMP)	Y	Y	Being conducted through the aquatic habitat survey assessments. Refer to Appendix A – Monitoring & Compliance Summary - Section 3.6 to 3.10 of this report for further details	
Aquatic Flora & Fauna in Lake Macdonald (Siphon Operation)				
Daily visual inspection of intake screens – ensure screens are functional, water approach velocity is at or below the limit noted as a mitigation, and no aquatic fauna are trapped against the screens. This will be conducted daily when the siphons are operating until 30th September 2025	Y	Y	Inspections have shown consistent results which show minimal blockages and no fauna entrapment inspections to date and have been scaled back to quarterly by divers. Divers inspected the siphons on March 3 rd 2026	
Divers or underwater drone will perform an inspection of the intake exclusion device. Initially this will be performed monthly. Cleaning is to be conducted by divers on an as needed basis. If weed	Y	Y	After multiple monthly inspections confirmed insignificant buildup of weed / debris on the intake screens the aquatic ecologist agreed that the project should scale back	

Version No:	Version Date:	Document title	Seqwater Document Number	Page:
1	16/06/2026	Quarterly Compliance and Monitoring Summary Report for the Coordinator-General	LMDIP-10000-GNL-ENV-REP-00004	15 of 84

Lake Macdonald Dam Improvement Project
Quarterly Compliance and Monitoring Summary Report for the Coordinator-General

Monitoring obligation	Previous quarter compliance met (Y/N)	Compliance met (Y/N)	Comments / Evidence of compliance	Ongoing Actions
build up and fauna entanglement is found to be negligible / insignificant then this activity may be scaled back in consultation with the project aquatic ecology expert.			inspections to quarterly. Intake screens now are inspected and cleaned quarterly by divers. Divers inspected the siphons on March 3 rd 2026, but were unable to undertake a full clean due to poor weather conditions. No blockages or evidence of fauna entrapment.	
Aquatic Flora & Fauna in Lake Macdonald (During Construction)				
Camera trap survey of platypus in upper dam reaches (continuous), and eDNA surveys quarterly	Y	Y	Being undertaken by SQP. Platypus detections (camera) were higher than previous periods. Refer to Appendix A - Monitoring & Compliance Summary – Section 3.4 of this report for further details	
Monthly visual monitoring of fauna in the lake to assess potential for fauna stress and need for adaptive management	Y	Y	Seqwater rangers undertake monthly on-water inspection across the lake. Fishology also undertake detailed quarterly aquatic habitat survey and assessments. No issues of stressed fauna have been identified throughout the monitoring period. Refer to Appendix A – Monitoring & Compliance Summary - Section 3 of this report for further details	
Daily visual monitoring of fauna in the stilling basin to assess potential for fauna stress	Y	Y	Stilling basin has been salvaged for aquatic animals and dewatered. No sign of fauna in distress.	Daily inspections ongoing. Recorded in Environmental Daily Diary
Bi-annual turtle monitoring during September to April for the duration of the project construction period of	Y	Y	Being undertaken through the habitat survey and assessments. No monitoring event was conducted in this	Ongoing in lake turtle health surveys

Version No:	Version Date:	Document title	Seqwater Document Number	Page:
1	16/06/2026	Quarterly Compliance and Monitoring Summary Report for the Coordinator-General	LMDIP-10000-GNL-ENV-REP-00004	16 of 84

Lake Macdonald Dam Improvement Project
Quarterly Compliance and Monitoring Summary Report for the Coordinator-General

Monitoring obligation	Previous quarter compliance met (Y/N)	Compliance met (Y/N)	Comments / Evidence of compliance	Ongoing Actions
turtle condition in lake using length weight measurements compared to baseline and evaluation survey data.			reporting period, next monitoring event is scheduled for July 2026.	
Monthly visual monitoring and water quality measured in situ (dissolved oxygen) of the relocation sites six months after relocations efforts have finished	Y	N/A	Fish from Lake Macdonald were translocated to Cooloolabin Dam in July 2025. Since more than 6 months has lapsed since translocation, monitoring of Cooloolabin Dam by LMDIP ceased in January 2026. However, Seqwater rangers continue their monthly inspections of Cooloolabin and would alert the project of any potential issues.	No longer required as more than 6 months has passed since the fish relocation. LMDIP monitoring has ceased.
Quarterly monitoring of fish condition in the lake, using length weight measurements compared to baseline and evaluation survey data	Y	Y	<p>Undertaken in April 2026 through the quarterly habitat survey and assessments by the SQP.</p> <p>Fish community monitoring observed a decrease in the abundance of most fish species. A reduction in fish abundance could be related to the large spilling event that occurred in March 2026 prior to field surveys. Some fish are likely to have moved downstream during this flow event. Downstream passage and a reduction in fish biomass is a natural occurrence within dams, and a recovery of most fish species is expected to be relatively quick.</p> <p>The condition of fish during this quarter were similar to, or better than those recorded during the baseline survey undertaken prior to the lake drawdown and construction activity.</p> <p>Refer to Appendix A – Monitoring & Compliance Summary - Section 3.2 of this report for further details</p>	

Version No:	Version Date:	Document title	Seqwater Document Number	Page:
1	16/06/2026	Quarterly Compliance and Monitoring Summary Report for the Coordinator-General	LMDIP-10000-GNL-ENV-REP-00004	17 of 84

Lake Macdonald Dam Improvement Project
Quarterly Compliance and Monitoring Summary Report for the Coordinator-General

Monitoring obligation	Previous quarter compliance met (Y/N)	Compliance met (Y/N)	Comments / Evidence of compliance	Ongoing Actions
Aquatic Flora & Fauna in Six Mile Creek (During Construction)				
Quarterly aquatic habitat monitoring	Y	Y	Undertaken in April 2026 through the quarterly habitat survey and assessments by the SQP. Refer to Appendix A – Monitoring & Compliance Summary - Section 3.6 to 3.10 of this report for further details	
Aquatic Habitat in Lake Macdonald				
Quarterly assessment of aquatic habitat at the lake monitoring site (450 m upstream of the dam) during the construction phase, and quarterly for one year post construction	Y	Y	Being undertaken through the habitat survey and assessments by the SQP.	
If practical, aerial drone surveys will be used to monitoring of the upper reaches of Lake Macdonald before, during and after the drawdown to document the rate of exposure and assess the location, variety and abundance of fish habitats across various water levels and seasons. Surveys should encompass a range of fish habitats, including (but not limited to) macrophyte beds, boulders, riffles, woody debris, and identifiable breeding sites, such as eel-tailed catfish (<i>Tandanus tandanus</i>) nests	Y	Y	Baseline drone survey assessment was carried out in June 2025 directly after lake drawdown. There is little value in continuing these surveys as all the exposed lowered embankments are covered in dense grasses. Seqwater rangers continue to undertake monthly lake perimeter inspections. No issues have been raised throughout the monitoring period.	
Aquatic Habitat in Six Mile Creek				
Undertake construction phase monitoring of habitat condition at the three downstream monitoring sites and two control sites	Y	Y	Being undertaken through the habitat survey and assessments by the SQP.	

Version No:	Version Date:	Document title	Seqwater Document Number	Page:
1	16/06/2026	Quarterly Compliance and Monitoring Summary Report for the Coordinator-General	LMDIP-10000-GNL-ENV-REP-00004	18 of 84

Lake Macdonald Dam Improvement Project
Quarterly Compliance and Monitoring Summary Report for the Coordinator-General

Monitoring obligation	Previous quarter compliance met (Y/N)	Compliance met (Y/N)	Comments / Evidence of compliance	Ongoing Actions
			An analysis of the habitat monitoring data against the habitat trigger values found that no trigger values were exceeded during the quarterly monitoring period. Refer to Appendix A – Monitoring & Compliance Summary - Section 2 of this report for further details	
Daily flow volume recorded at State Government gauging station at Cooran compared to long-term flow percentiles; flow data accessed and assessed monthly	Y	Y	Daily flows being monitored and recorded. Refer to Appendix A – Monitoring & Compliance Summary - Section 1.1 of this report for further details	
Biosecurity - Pests				
Lake Macdonald: During construction, monitor presence of pest species in the lake as part of quarterly fish and turtle monitoring	Y	Y	Being undertaken by the SQP through the habitat survey and assessments Identified pest species can be seen in Table 13	
Six Mile Creek: During construction, monitor presence of pest species as part of quarterly fish and turtle monitoring	Y	Y	Being undertaken through the habitat survey and assessments Identified pest species can be seen in Table 13	
Relocation Sites: During salvage and relocation, record the number of pest species observed and euthanised (e.g. in a register) during relocation activities.	Y	Y	Refer to Appendix A – Monitoring & Compliance Summary Table 17	
Biosecurity - Weeds				

Version No:	Version Date:	Document title	Seqwater Document Number	Page:
1	16/06/2026	Quarterly Compliance and Monitoring Summary Report for the Coordinator-General	LMDIP-10000-GNL-ENV-REP-00004	19 of 84

Lake Macdonald Dam Improvement Project
Quarterly Compliance and Monitoring Summary Report for the Coordinator-General

Monitoring obligation	Previous quarter compliance met (Y/N)	Compliance met (Y/N)	Comments / Evidence of compliance	Ongoing Actions
Lake Macdonald: Spot checks of weed hygiene certifications and inspection and wash down records.	Y	Y	Regular compliance checks occurring. All aquatic vessels coming onto the lake are fully inspected by Seqwater Rangers.	
Monthly monitoring of the lake (and lake margins) for outbreaks of not previously established restricted aquatic or semi-aquatic plants	Y	Y	Seqwater rangers continue to undertake monthly lake perimeter inspections. No issues have been raised throughout the monitoring period.	
Six Mile Creek Downstream: Record visual observations of aquatic and semi-aquatic weed species as part of aquatic habitat monitoring	Y	Y	Being undertaken through the habitat survey and assessments by the SQP. Refer to Appendix A – Monitoring & Compliance Summary - Section 3.6 of this report for further details	
Relocation Sites: Record visual observations of aquatic and semi-aquatic weed species as part of relocation site monitoring	Y	Y	Seqwater rangers undertaking monthly visual inspections in Cooloolabin Dam. No instances of new biosecurity issues have been reported.	Monitoring of Cooloolabin Dam by LMDIP ceased in January 2026. Seqwater rangers continue their monthly inspections.
LMDIP-05829-GNL-ENV-MPL-00003 - Flora & Fauna (Terrestrial) Management Plan				
All exclusion barriers, no-go zones, excavations which could contain trapped fauna shall be inspected daily and maintained as required. Any resulting actions arising shall be raised in site register/records and through weekly inspections	Y	Y	Being completed through the site inspection process. The site perimeter is secured with cyclone fencing which significantly reduces fauna interactions. Potential for fauna entrapment to occur in the sediment basins. These are inspected multiple times daily.	Fauna spotter catcher to be called to deal with any entrapment issues.

Version No:	Version Date:	Document title	Seqwater Document Number	Page:
1	16/06/2026	Quarterly Compliance and Monitoring Summary Report for the Coordinator-General	LMDIP-10000-GNL-ENV-REP-00004	20 of 84

Lake Macdonald Dam Improvement Project
Quarterly Compliance and Monitoring Summary Report for the Coordinator-General

Monitoring obligation	Previous quarter compliance met (Y/N)	Compliance met (Y/N)	Comments / Evidence of compliance	Ongoing Actions
Inspection of exclusion/buffer zones to occur during weekly inspections and any actions arising recorded in site register.	Y	Y	Being completed through the site inspection process.	
Establish a series of photo monitoring points within areas of direct and indirect impact to monitor impacts associated with construction. This includes identifying sites, taking preconstruction photos and recording GPS location, photo direction (north, east, etc.) at each point. Once prior to construction, monthly throughout lowering and construction, and quarterly until the lake has refilled and vegetation communities are re-established.	Y	Y	Photo monitoring points have been established at 9 locations. These photos are being taken in the same direction with timestamp and GPS location recorded. They are being stored in an electronic filing system and being reviewed to determine if any impacts are visible. No evidence of indirect offsite impacts have been detected.	
LMDIP-05829-GNL-ENV-MPL-00005 - Noise and Vibration Management Plan				
Monitoring of the meteorological conditions	Y	Y	Refer to Section 6 of this report for further details	
Ongoing unattended noise monitoring at the 2 locations on Lake Macdonald Drive will be undertaken	Y	Y	Unattended noise monitoring undertaken at the two specified locations. An additional Site Hive noise monitor was implemented for the demolition period to increase noise data capture throughout this potentially high-impact activity. Results from both attended and unattended monitoring regularly exceeded noise objectives however the majority of exceedances are not attributed to construction activities. Exceedances of noise objectives are regularly breached on occasions when no works are happening (i.e. nights & weekends).	Continue attended monitoring.

Version No:	Version Date:	Document title	Seqwater Document Number	Page:
1	16/06/2026	Quarterly Compliance and Monitoring Summary Report for the Coordinator-General	LMDIP-10000-GNL-ENV-REP-00004	21 of 84

Lake Macdonald Dam Improvement Project
Quarterly Compliance and Monitoring Summary Report for the Coordinator-General

Monitoring obligation	Previous quarter compliance met (Y/N)	Compliance met (Y/N)	Comments / Evidence of compliance	Ongoing Actions
			Refer to Appendix A – Monitoring & Compliance Summary - Section 6 for more details	
Undertake attended noise monitoring at a location to be determined following receipt of a complaint or identification of an exceedance. Precise monitoring locations must be determined in consultation with an appropriately qualified person (AQP)	Refer to Appendix A	Refer to Appendix A	A number of representative attended monitoring events occurred during this reporting period. Refer to Appendix A – Monitoring & Compliance Summary - Section 6 and Appendix B of this report for further details.	Continue representative attended monitoring.
Unattended vibration monitoring at a location deemed suitable to monitor vibration impacts. Precise monitoring locations must be determined in consultation with an AQP	Y	Y	During the monitoring period there were no vibration monitoring exceedances recorded that were directly related to construction activities Refer to Appendix A – Monitoring & Compliance Summary - Section 6.4 of this report for further details.	
Regular inspection of noise and vibration controls shall be undertaken using the Weekly Environmental Management Inspection Checklist	Y	Y	Through the environmental inspection process.	
LMDIP-05829-GNL-ENV-MPL-00006 Dust and Air Quality Management Plan				
PM ₁₀ concentrations will be continuously monitored	Y	Y	No exceedances of objective criteria to report. Refer to Appendix A – Monitoring & Compliance Summary - Section 5.2 Figure 17 of this report for further details.	
Dust deposition gauges will be installed and monitored at four locations (DDG01 to DDG04)	Y	N	Dust deposition gauges installed at all locations as shown in Figure 17 of this report. Three exceedances of objective criteria to report.	

Version No:	Version Date:	Document title	Seqwater Document Number	Page:
1	16/06/2026	Quarterly Compliance and Monitoring Summary Report for the Coordinator-General	LMDIP-10000-GNL-ENV-REP-00004	22 of 84

Lake Macdonald Dam Improvement Project
Quarterly Compliance and Monitoring Summary Report for the Coordinator-General

Monitoring obligation	Previous quarter compliance met (Y/N)	Compliance met (Y/N)	Comments / Evidence of compliance	Ongoing Actions
			Refer to Appendix A – Monitoring & Compliance Summary - Section 5.1 Table 19 of this report for further details.	
PM ₁₀ and dust deposition monitoring at additional specific locations	Y	Y	No complaints this period.	
Visual inspection of airborne dust and dust deposition shall be undertaken as part of the weekly environmental inspection.	Y	Y	Through the environmental inspection process.	
Vehicles, plant, equipment and machinery shall be regularly inspected to ensure good working order.	Y	Y	Conducted both prior to receiving onsite and daily through plant pre-start	
LMDIP-05829-GNL-ENV-MPL-00007 - Hazardous Substances Management Plan				
Regular equipment checks by operators for evidence of leaks and fitness of hydraulic hoses and seals	Y	Y	Conducted both prior to receiving onsite and daily through a plant pre-start	
Inspection of hazardous substances management and storage areas, and spill kits to be undertaken as part of a weekly environment management inspection checklist.	Y	Y	Completed through the environmental inspections. Compliant throughout this period.	
Handling and storage of hazardous substances will be monitored daily, with observations documented in site diaries	Y	Y	Inspected via the daily checklist process. Compliant throughout this period.	
LMDIP-05829-GNL-ENV-MPL-00008 Waste Resource Use				
Waste management will be inspected as part of a weekly environment or HSE site inspection.	Y	Y	Through the environmental inspection process.	

Version No:	Version Date:	Document title	Seqwater Document Number	Page:
1	16/06/2026	Quarterly Compliance and Monitoring Summary Report for the Coordinator-General	LMDIP-10000-GNL-ENV-REP-00004	23 of 84

Lake Macdonald Dam Improvement Project
Quarterly Compliance and Monitoring Summary Report for the Coordinator-General

Monitoring obligation	Previous quarter compliance met (Y/N)	Compliance met (Y/N)	Comments / Evidence of compliance	Ongoing Actions
Keep and audit records of any regulated/trackable waste removed from the site, including name and license number of waste transporters, volume and description of waste transported, destination of waste, and license number of the waste treatment operator. Registers and manifests maintained to track waste material	Y	Y	No waste related issues to report through the monitoring period. Refer to Appendix A – Monitoring & Compliance Summary - Section 6 of this report for further details.	
Discharges from site associated with waste management shall be monitored in accordance with the requirements of the relevant EMP sub-plan (e.g. Water for release to water, noise and vibration for noise, air quality etc).	Y	Y	No discharges from waste sources have been observed throughout the monitoring period.	
LMDIP-05829-GNL-ENV-MPL-00009 Weed and Pest Management Plan				
Vehicles, plant, equipment and machinery shall be inspected for cleanliness daily during pre-start	Y	Y	Daily Pre-Start check	
Visual inspection of weed and pest matters (including inspection of any weed hygiene records) shall be undertaken as part of weekly environmental inspections	Y	Y	Completed through the environmental inspections. Compliant throughout this period.	
Monthly audits of weed hygiene records (as part of the Monthly Environment Report) and written assurance of material received	Y	Y	Weed Hygiene records for vehicles and marine vessels when they arrive onsite are assessed/audited by JH and Seqwater	

Version No:	Version Date:	Document title	Seqwater Document Number	Page:
1	16/06/2026	Quarterly Compliance and Monitoring Summary Report for the Coordinator-General	LMDIP-10000-GNL-ENV-REP-00004	24 of 84

6. Weather

A weather monitoring station has been established at the project site since early works began in November 2024. The following section summarises the data collected over this reporting period.

6.1. Rainfall

Rainfall observed on site was above the BOM long term average during monitoring period. There was frequent short intense rain events during this time which saw heavy falls and storm events. Two significant rainfall events occurred in this monitoring period which caused the site controls to overtop their designed capacity and was recorded as an environmental incident, (Refer to section 8).

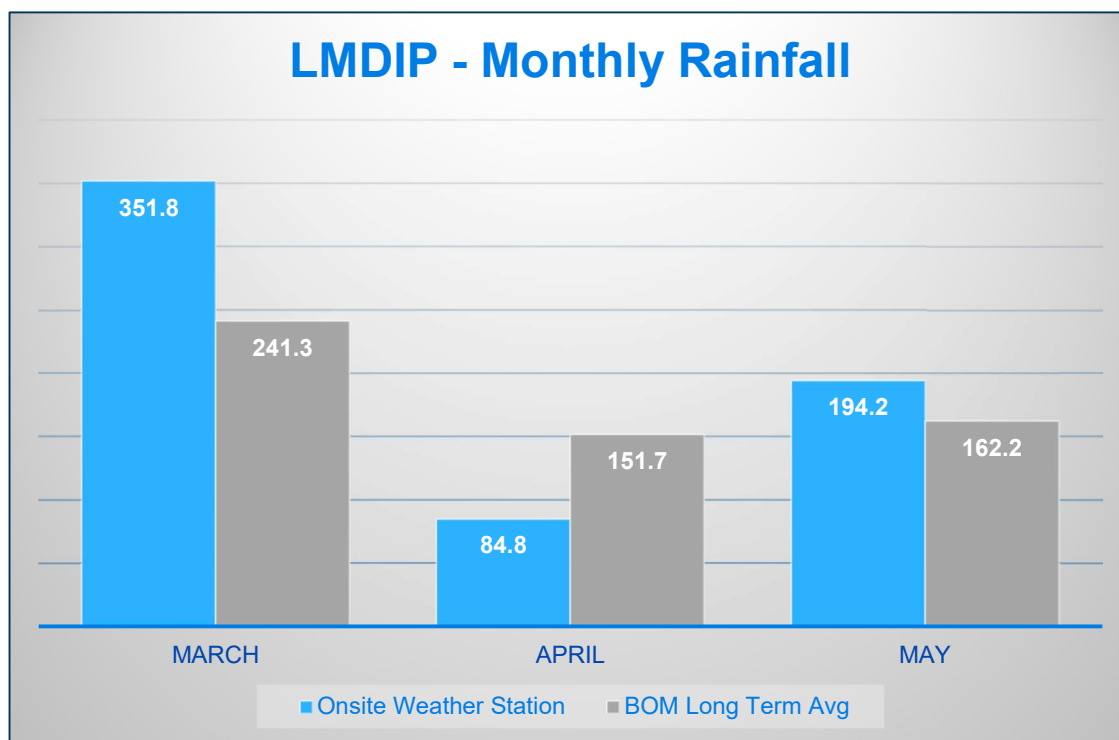


Figure 1: LMDIP Monthly Rainfall compared to the Tewantin long term average.

6.2. Temperature

Temperatures (daily maximum and minimum) recorded during the period ranged between:

- March – 11°C - 34°C
- April – 11°C - 31°C
- May – 9°C - 26°C

Version No:	Version Date:	Document title	Seqwater Document Number	Page:
2	16/06/2026	Quarterly Compliance and Monitoring Summary Report for the Coordinator-General	LMDIP-10000-GNL-ENV-REP-00004	25 of 84

A weekly temperature trace is provided in Figure 2.

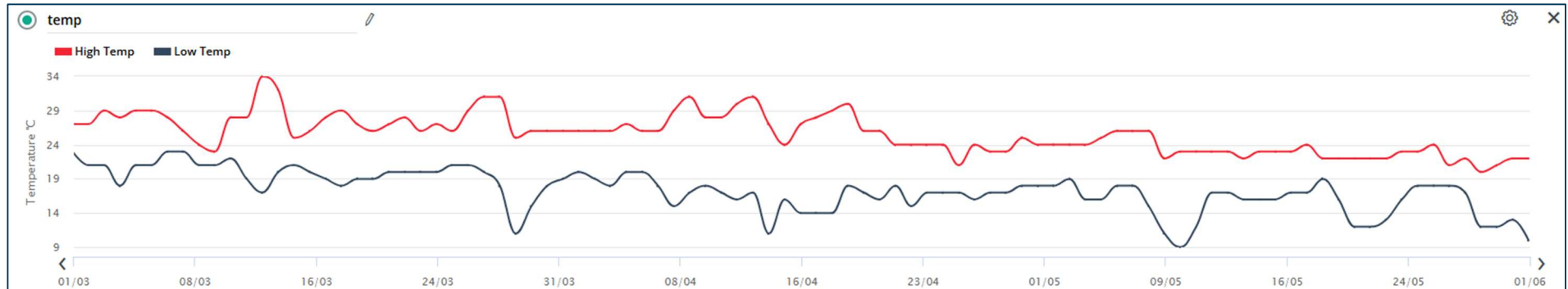


Figure 2: LMDIP Weekly Temperature Trace results

Version No:	Version Date:	Document title	Seqwater Document Number	Page:
1	16/06/2026	Quarterly Compliance and Monitoring Summary Report for the Coordinator-General	LMDIP-10000-GNL-ENV-REP-00004	26 of 84

6.3. Windspeed & Wind direction

Windspeed and direction recorded during the period continued to be unremarkable with average daily windspeeds ranging between 1-5m/s with a predominant North Westerly direction. Refer to Figure 3 for average wind speed and Figure 4 for direction.

March



April



Version No:	Version Date:	Document title	Seqwater Document Number	Page:
1	16/06/2026	Quarterly Compliance and Monitoring Summary Report for the Coordinator-General	LMDIP-10000-GNL-ENV-REP-00004	27 of 84

May

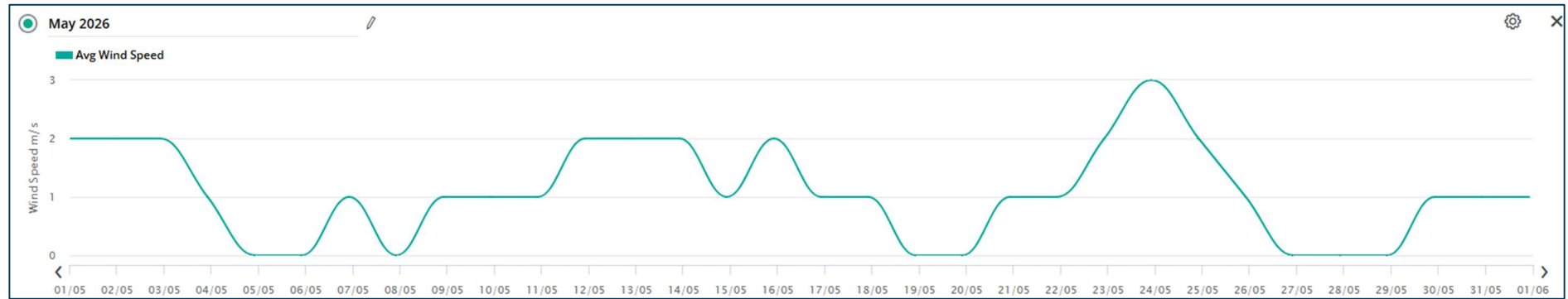


Figure 3: LMDIP Average Wind Speed

Version No:	Version Date:	Document title	Seqwater Document Number	Page:
1	16/06/2026	Quarterly Compliance and Monitoring Summary Report for the Coordinator-General	LMDIP-10000-GNL-ENV-REP-00004	28 of 84

6.4. Wind direction

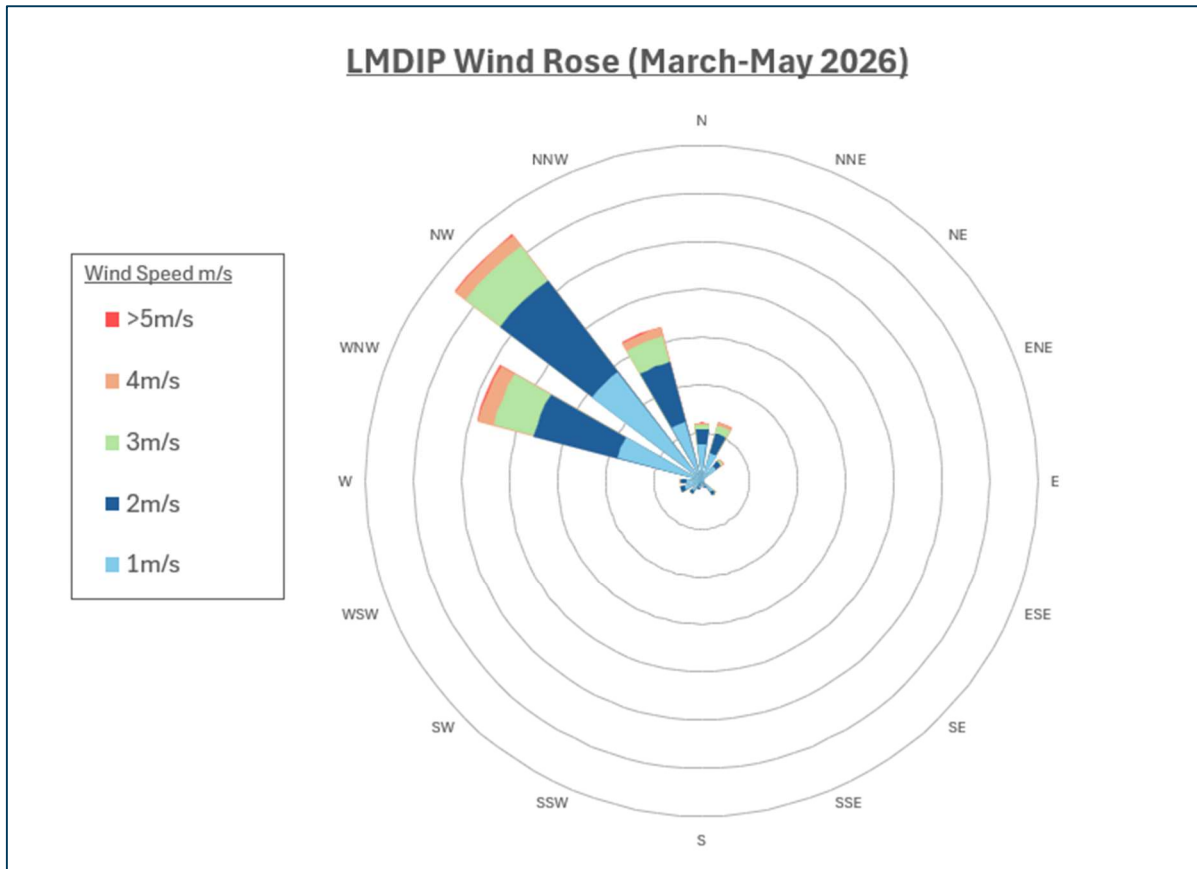


Figure 4: Wind Rose – 01/03/2026 to 31/06/2026

Version No:	Version Date:	Document title	Seqwater Document Number	Page:
1	16/06/2026	Quarterly Compliance and Monitoring Summary Report for the Coordinator-General	LMDIP-10000-GNL-ENV-REP-00004	29 of 84

7. Cultural Heritage

There was no works requiring Cultural Heritage Monitoring to be conducted onsite by the Kabi Kabi Cultural First Nations people during this monitoring report period.

Version No:	Version Date:	Document title	Seqwater Document Number	Page:
1	16/06/2026	Quarterly Compliance and Monitoring Summary Report for the Coordinator-General	LMDIP-10000-GNL-ENV-REP-00004	30 of 84

8. Incidents

There were three environmental incidents during the monitoring report period detailed in Table 4.

Table 4: LMDIP Incident summary

Date	Incident	Description	Closed out (Y/N)
9/03/2026	260mm above design rain event caused overtopping of controls onsite resulting in sediment laden water to leave site.	Erosion and Sediment controls were overtopped by the rainfall intensity across a saturated area, leading to sediment laden water leaving site. Action: Inspect ESCs to confirm proper functionality or whether improvements can be made	Yes
18/05/2026	Above design intensity rain event onsite resulting in a minor amount of sediment laden water to overtop controls and leave site.	Erosion and Sediment controls were overtopped by the rainfall intensity and amount leading to sediment laden water leaving site. Action: Inspect ESCs to confirm proper functionality or whether improvements can be made	Yes
18/05/2026	Minor hydraulic oil spill <2L to ground in Borrow Pit from excavator.	Spill was contained and cleaned up immediately. Excavator was repaired by fitter the following day.	Yes

Version No:	Version Date:	Document title	Seqwater Document Number	Page:
1	16/06/2026	Quarterly Compliance and Monitoring Summary Report for the Coordinator-General	LMDIP-10000-GNL-ENV-REP-00004	31 of 84

9. Complaints

No community complaints were received during the reporting period.

Extensive stakeholder and community engagement was undertaken throughout the reporting period. This included during the lead-up to and during the demolition of the dam wall and spillway, with over 4,000 community and stakeholder interactions recorded.

This proactive engagement approach, supported by extensive planning and coordination between the environmental and construction teams, helped build strong community awareness and understanding of project activities.

A range of mitigation measures were implemented, including on-site noise controls and off-site support such as respite offers, temporary accommodation and in home acoustic treatments. On site measures included the installation of noise mats along site fencing, scheduling higher-impact works during daytime hours where practicable, the use of acoustic shrouds during night works, and comprehensive dust, noise and vibration monitoring throughout demolition.

Version No:	Version Date:	Document title	Seqwater Document Number	Page:
1	16/06/2026	Quarterly Compliance and Monitoring Summary Report for the Coordinator-General	LMDIP-10000-GNL-ENV-REP-00004	32 of 84

10. Summary & Conclusion

Monitoring has been completed for all aspects outlined in the approved Management Plans. This monitoring was conducted continuously throughout the extended monitoring period from 1 March 2026 to 29 May 2026.

Water quality monitoring continues to show exceedances of both high and low risk criteria due to the narrow nature of these thresholds, however none of these exceedances are directly attributed to construction-related activities however could be attributed to the lake lowering. There is a continued improvement compared to the previous monitoring quarter which is likely attributed to the cooler temperatures.

Noise monitoring compliance remains challenging as target levels are set below recorded baseline levels. Moderate exceedances of the acoustic quality objectives were recorded during both standard construction and demolition works, however noise levels were generally consistent with baseline conditions and were predominantly influenced by non-construction sources such as traffic. All reasonable and practical noise mitigation measures were installed for the works and no complaints were received, which was an excellent outcome as this monitoring period covered demolition works also.

There were no vibration exceedances caused by sheet piling or other construction activities during this monitoring quarter.

Dust and air quality monitoring recorded no exceedances of PM₁₀ criteria, however there were 3 exceedances of the dust deposition gauge (DDG) criteria observed. Based on observations of non-project related works that occurred close to the DDGs during the monitoring period it's believed that these exceedances are not project-related.

Aquatic habitat and fauna monitoring remains stable, with a general decrease in fish communities over time within the lake with no immediate intervention or action recommended. This is likely attributed to heavy rain and overtopping event which allowed fish movement downstream.

The next monitoring compliance summary report will cover the period from 30 May March 2026 to 31 July 2026.

Version No:	Version Date:	Document title	Seqwater Document Number	Page:
1	16/06/2026	Quarterly Compliance and Monitoring Summary Report for the Coordinator-General	LMDIP-10000-GNL-ENV-REP-00004	33 of 84

Appendix A - Monitoring & Compliance Summary

1. Water

1.1. Water Quantity

LMDIP regularly monitor the gauging station along Six Mile Creek at Cooran (138107B) to ensure flow regimes remain comparable to what’s considered normal. This gauging station is located approximately 20km downstream from Lake Macdonald. Figure 5 shows the average monthly flows throughout the project timeline compared to the 10yr average. Environmental flows are always maintained as per the Lake Macdonald Water License.

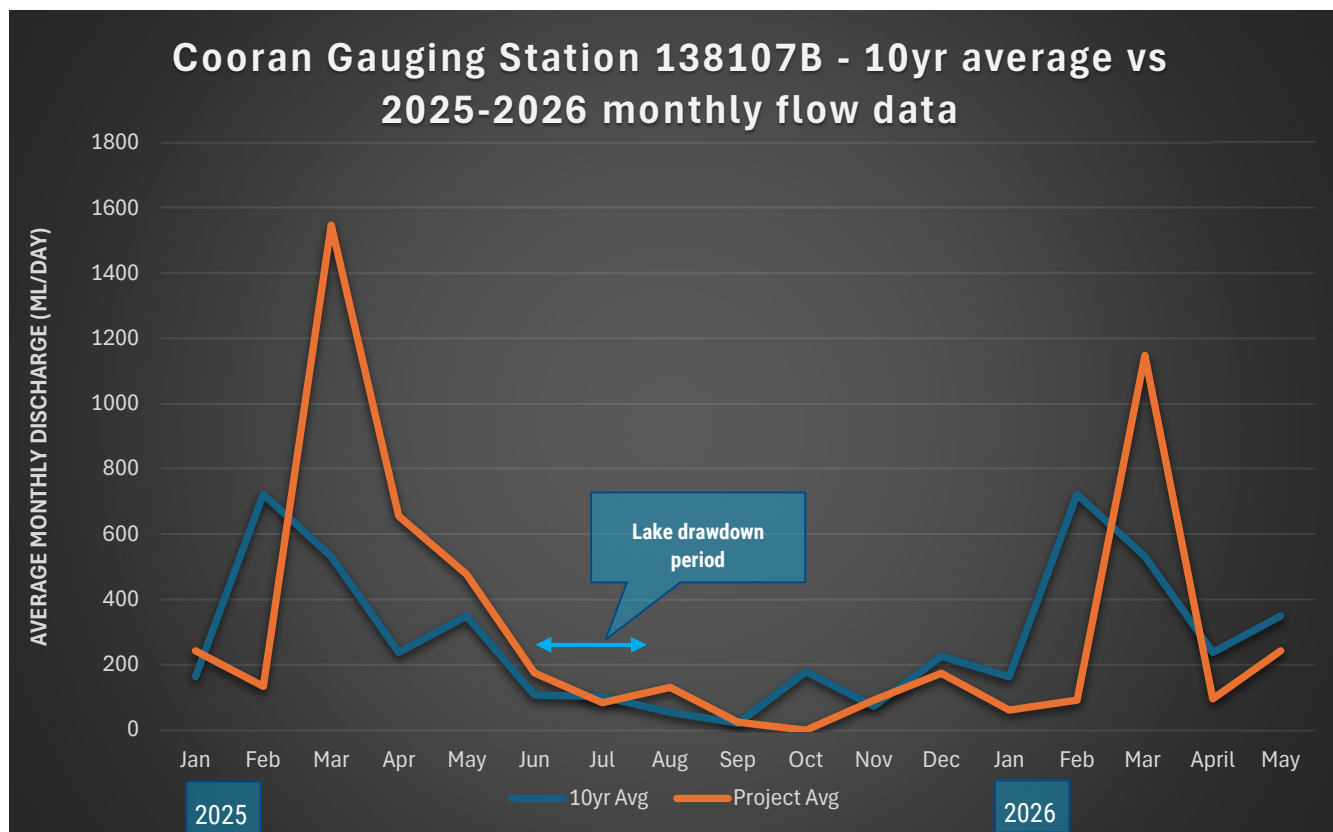


Figure 5: Comparing monthly average flows against the 10yr average – Cooran Gauging Station 138107B

The following graph gives an estimation of ML/day discharged downstream through the siphon system throughout the reporting period. This is based on an average of 62ML/day passing through each siphon pipe (Figure 6).

Version No:	Version Date:	Document title	Seqwater Document Number	Page:
1	16/06/2026	Quarterly Compliance and Monitoring Summary Report for the Coordinator-General	LMDIP-10000-GNL-ENV-REP-00004	34 of 84

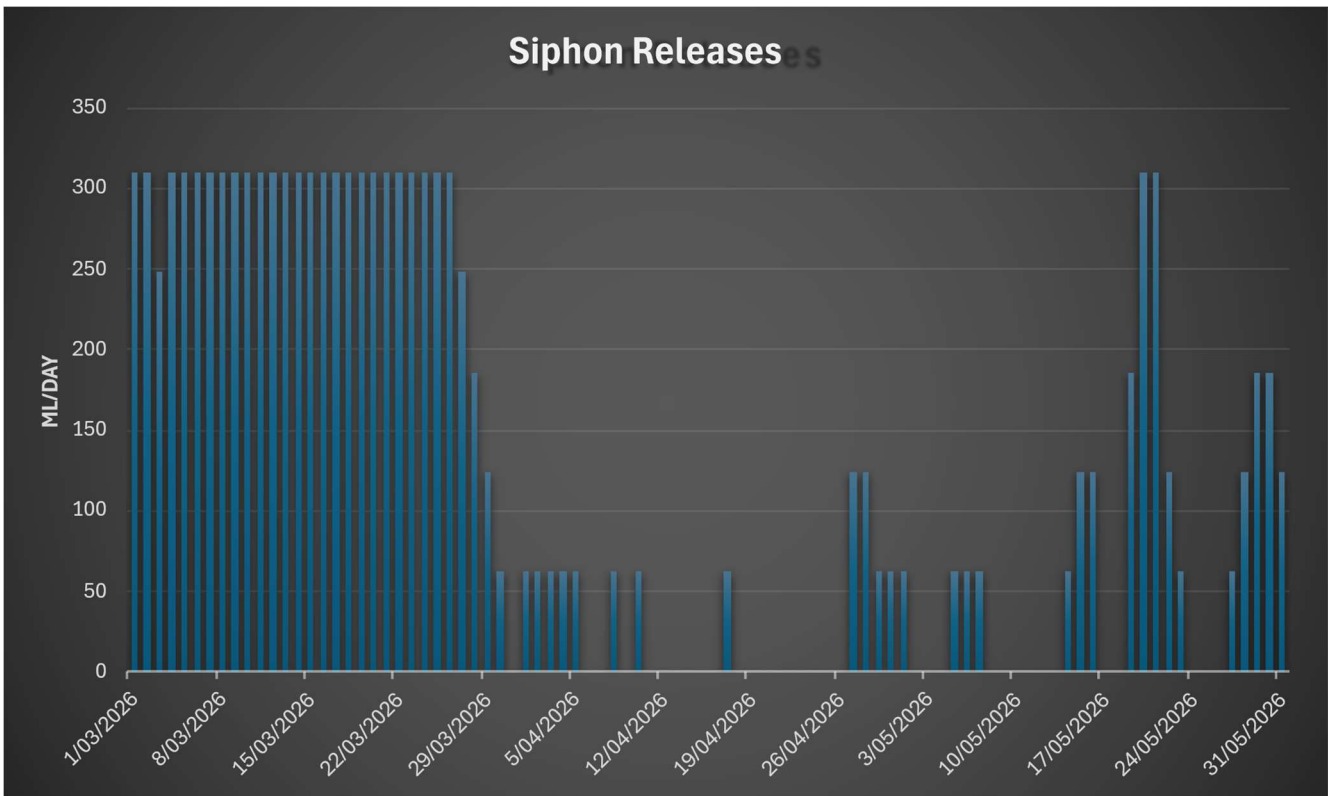


Figure 6: Discharge to Six Mile Creek (Siphons and Environmental Flows).

1.2. Water Quality

Water quality monitoring is being conducted with a combination of real-time loggers, hand-held multi-parameter probe testing and laboratory analysis at the locations shown in Figure 7. Monitoring results were assessed against the nominated water quality objectives detailed in Table 5. Water quality threshold criteria have been taken from the F&FDMP.

Version No:	Version Date:	Document title	Seqwater Document Number	Page:
1	16/06/2026	Quarterly Compliance and Monitoring Summary Report for the Coordinator-General	LMDIP-10000-GNL-ENV-REP-00004	35 of 84

Table 5: Water Quality Objectives (F&FDMP)

Water Quality Parameter	Unit	Investigation trigger value		Compliance target value	
		Minimum	Maximum	Minimum	Maximum
Lake Macdonald (freshwater lakes/reservoirs)					
pH	log {H+}	6.1	6.9	6.1	8.0
Turbidity	NTU	-	<18.9	-	<25
Dissolved Oxygen	% saturation	<33	-	<20	-
Total suspended solids	mg/L	-	5	-	9
Total nitrogen	mg/L	-	0.059	-	0.78
Nitrate	mg/L	-	0.014	-	0.020
Nox	mg/L	-	0.011	-	0.040
Ammonia	mg/L	-	0.053	-	0.110
Total phosphorus	mg/L	-	0.034	-	0.048
Six Mile Creek (lowland freshwater)					
pH	log {H+}	5.9	7.10	5.9	8
Turbidity	NTU	-	<6.6	-	<50
Dissolved Oxygen	% saturation	<56	-	<36	-

Version No:	Version Date:	Document title	Seqwater Document Number	Page:
1	16/06/2026	Quarterly Compliance and Monitoring Summary Report for the Coordinator-General	LMDIP-10000-GNL-ENV-REP-00004	36 of 84

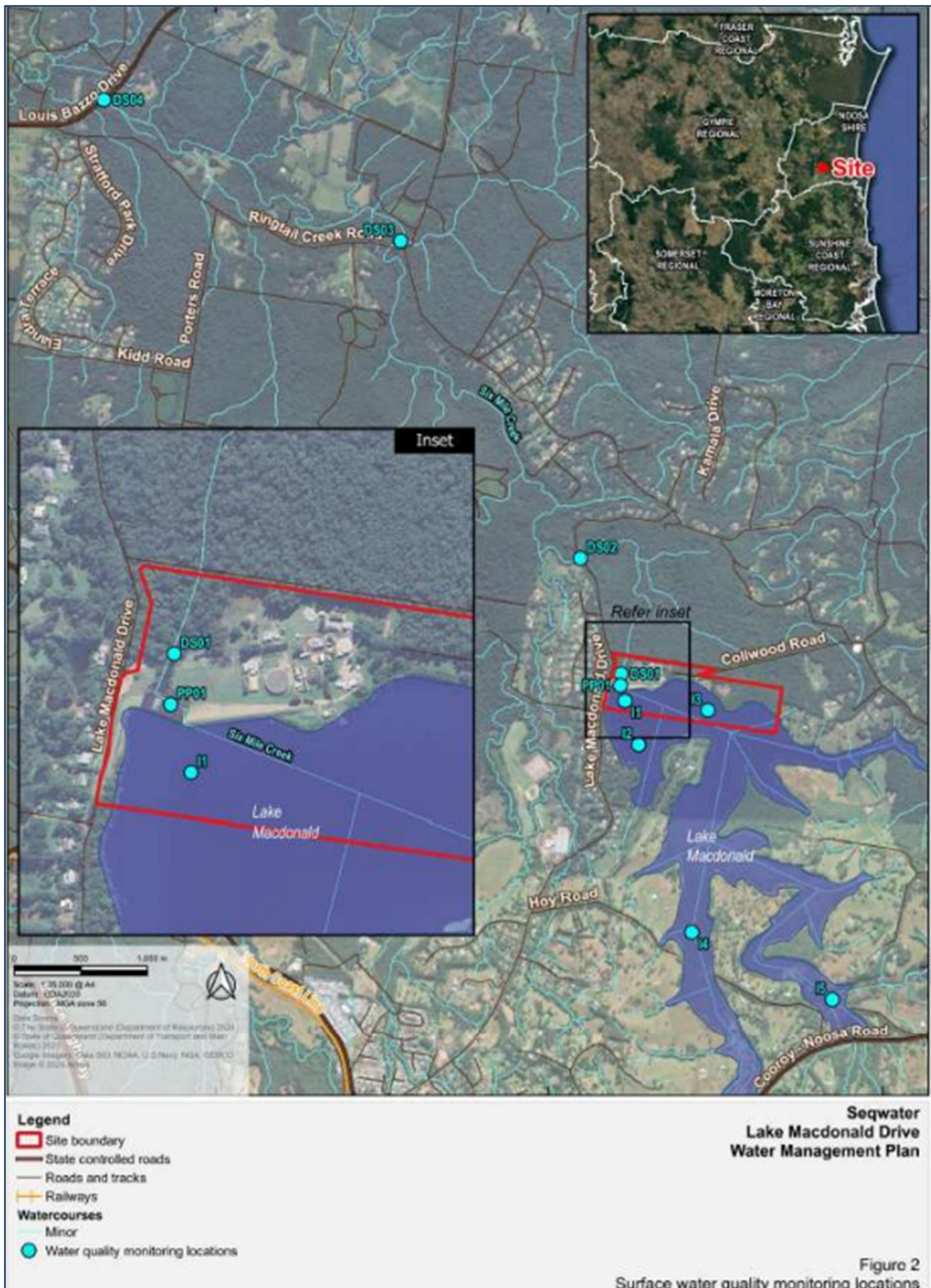


Figure 7: Water Quality Monitoring Locations

Version No:	Version Date:	Document title	Seqwater Document Number	Page:
1	16/06/2026	Quarterly Compliance and Monitoring Summary Report for the Coordinator-General	LMDIP-10000-GNL-ENV-REP-00004	37 of 84

1.2.1. Upstream Monitoring

In situ water monitoring was conducted on 65 occasions across the reporting period as well as lab samples collected on 21 occasions, targeting surface sampling at locations I1 to I5 on a weekly, fortnightly and monthly basis at locations shown in Figure 7. This included 60 field monitoring events and 21 lab sampling events. The monitor located at I1 is a real time continuous water quality metre which relays readings to a web-based platform every hour. The monitor relays a recording to the web-based platform hourly. This section summarises the data for the upper reaches and the main body of the impoundment.

It is important to note that upstream water quality is representative of water flowing into the lake. The project has no direct impact on the upstream water quality; however indirect effects associated with drawdown of the lake may be observed. The majority of exceedances that occur in the upper reaches are likely attributed to the shallower depths and inputs from upstream sources. Table 6 shows how often the project water quality objectives were exceeded in the main body of the lake and Table 7 shows how often the project water quality objectives were exceeded in the upper reaches.

Table 6: Upstream Water Quality Summary (Sites I1 – I3: Main body of the impoundment)

Parameter		DO%	NTU	pH	Ammonia (mg/L)	Nitrate (mg/L)	TP (mg/L)	TSS (mg/L)
Criteria	Low	33 - 20	18.9 - 25	6.1-6.9	0.053 – 0.11	0.0142 – 0.02	0.034 – 0.048	5 - 9
	high	<20	>25	6.1.-8.0	>0.11	>0.02	>0.048	>9
Non-conform – low trigger	Count	0	2	15	4	3	4	5
	%	0%	5%	38%	24%	18%	24%	29%
Non-conform – high trigger	count	0	4	2	4	3	7	4
	%	0%	10%	5%	24%	18%	41%	24%

Version No:	Version Date:	Document title	Seqwater Document Number	Page:
1	16/06/2026	Quarterly Compliance and Monitoring Summary Report for the Coordinator-General	LMDIP-10000-GNL-ENV-REP-00004	38 of 84

Table 7: Upstream Water Quality Summary (Sites I4 – I5: Upper reaches of the lake arms)

Parameter		DO%	NTU	pH	Ammonia (mg/L)	Nitrate (mg/L)	TP (mg/L)	TSS (mg/L)
Criteria	Low	33 - 20	18.9 - 25	6.1-6.9	0.053 – 0.11	0.0142 – 0.02	0.034 – 0.048	5 - 9
	high	<20	>25	6.1.-8.0	>0.11	>0.02	>0.048	>9
Non-conform – low trigger	Count	0	5	13	0	0	0	2
	%	0%	19%	50%	0%	0%	0%	33%
Non-conform – high trigger	count	0	6	0	4	2	4	1
	%	0%	23%	0%	67%	33%	67%	17%

The data collected indicates that:

- **Dissolved Oxygen (DO):** DO remained stable with no exceedances during the monitoring period across both sites.
- **Turbidity:** Turbidity showed a significant decrease of all the exceedances across the main body of the impoundment and the upper reaches of the lake compared to the previous quarter.
- **pH:** pH remained generally stable across both sites in the main body of the lake and the upper reaches of the lake.
- **Nutrients:** nitrate and phosphorous remained similar to last quarters exceedances at the upstream I4 and I5 sites, however ammonia showed a 33% decrease from 100% of exceedances recorded last quarter. The main body of the impoundment remained generally consistent for both low and high-risk trigger exceedances.
- **TP-** Total Phosphate exceedances remained stable in the upper reaches with no change of the high-risk trigger exceedances compared to last quarter. There was also a slight decrease in exceedances across both trigger values across the whole lake.
- **TSS –** Total suspended solids showed a reduction in high and low risk triggers across both sites for the monitoring period.
- **SPC/EC** is being monitored at all sites. There are no specific WQ objectives for EC however all sampling events show relatively low EC levels which are well within normal ranges for freshwater systems.

It is important to note that while the lake volume is significantly reduced from FSL, the lake is still receiving the same amount of nutrient inputs from the catchment during rainfall events. This results in a lower dilution rate across the waterbody.

1.2.2. Downstream Monitoring

Version No:	Version Date:	Document title	Seqwater Document Number	Page:
1	16/06/2026	Quarterly Compliance and Monitoring Summary Report for the Coordinator-General	LMDIP-10000-GNL-ENV-REP-00004	39 of 84

Downstream water monitoring was conducted on 52 occasions across the reporting period targeting surface sampling at locations DS01 to DS04 on a weekly, fortnightly and monthly basis at locations shown in Figure 7. This included 52 field monitoring events and 18 lab sampling events. The real-time monitor located at DS01 provides continuous readings to a web-based platform every hour. A flood event damaged the battery in March and was offline from 03.2026 - 09.04.2026 while being repaired. The repaired unit continued to have further problems so was returned for further repairs in May. Daily reading were collected with the field probe throughout these down-times.

Table 8 represents the exceedances of water quality objectives for the downstream locations and Table 9 represents the water quality exceedances for the stilling basin.

The frequency of water quality monitoring in the stilling basin was reduced during this monitoring period in line with the F&FDMP and following consultation with the aquatic ecologist.

Initially the stilling basin was monitored daily for pH, dissolved oxygen and turbidity daily. After five months, in April 2025, based on stable results, the monitoring frequency was reduced to weekly, unless the stilling basin was undergoing dewatering, in which case daily monitoring has been maintained.

As per Table 5-2 of the F&FDMP and after consultation with the aquatic ecologist, ongoing regular laboratory sampling of the stilling basin has ceased and will be limited to testing following a weather event prior to dewatering. Although regular nitrate exceedances were recorded (as listed in Table 8) it was agreed by the SQP that stilling basin water posed an insignificant risk to water quality and aquatic fauna upstream or downstream of project activities to warrant the regular continued lab sampling. The nitrate exceedances were attributed to the low water level where samples were sourced close to the muddy sediments.

Table 8: Downstream Water Quality Summary (DS01, DS02, DS03, DS04)

Parameter		DO%	Turbidity NTU	pH
Criteria	low	56	6.6	5.9-7.1
	high	36	50	5.9-8.0
Non-conform – low trigger	Count	9	36	36
	%	18%	69%	69%
Non-conform – high trigger	Count	0	0	0
	%	0%	0%	0%

Version No:	Version Date:	Document title	Seqwater Document Number	Page:
1	16/06/2026	Quarterly Compliance and Monitoring Summary Report for the Coordinator-General	LMDIP-10000-GNL-ENV-REP-00004	40 of 84

Lake Macdonald Dam Improvement Project
Quarterly Compliance and Monitoring Summary Report for the Coordinator-General

- **Dissolved Oxygen (DO):** DO showed a significant decrease in low-risk and high-risk exceedances of the trigger values than the last monitoring period. With the tailwater filled with clean rock fill in March 2026, previous issues with low DO% resulting from the aggregation of fish have significantly decreased.
- **Turbidity:** Turbidity showed a 17% reduction in low-risk trigger exceedances and no change to the high-risk trigger exceedances which remained at 0.
- **pH:** pH remained stable during this period with only an 8% decrease in low-risk trigger exceedances and a 2% increase of the high-risk exceedances compared to the previous quarter. With narrow low trigger thresholds in place, divergence is not indicative of poor performance or poor water quality, and no visual impacts have been noted. Natural factors such as rainfall, vegetation and aquatic matter and geology can also impact pH.
- **SPC/EC** is being monitored at all sites. There is no criteria for EC so there are no exceedances to monitor against.

Table 9: Downstream water quality summary for the stilling basin (PP01)

Parameter	Parameter	DO%	NTU	pH	Ammonia	Nitrate	TP	TSS
Criteria	Low	33 - 20	18.9 - 25	6.1-6.9	0.053 – 0.11	0.0142 – 0.02	0.034 – 0.048	5 - 9
	High	<20	>25	6.1-8.0	>0.11	>0.02	>0.048	>9
Non-conform – low trigger	Count	0	1	0	1	0	1	2
	%	0%	3%	0%	50%	0%	50%	100%
Non-conform – high trigger	Count	0	10	1	0	2	0	0
	%	0%	28%	3%	0%	100%	0%	0%

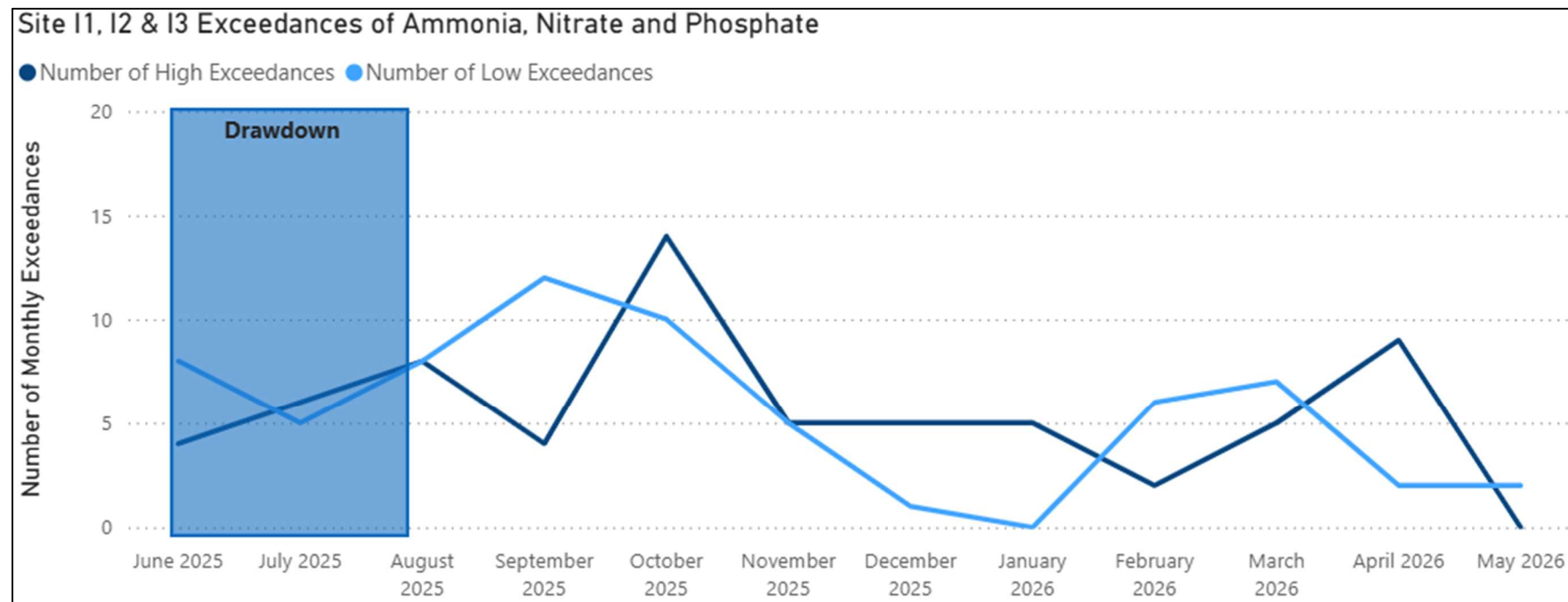
- **Dissolved Oxygen (DO):** DO showed conformance with both low and high-risk triggers 100% of sampling events.
- **Turbidity-** Turbidity showed a significant reduction in the high-risk trigger exceedances from 46 to 28% and low risk trigger exceedances from 10% to 3% of exceedances.
- **pH:** pH showed a reduction in both trigger exceedances with no low-risk trigger exceedances and 3% of high-risk exceedances.
- **Ammonia** – Ammonia showed no exceedances for the high-risk trigger, however, did increase from 20% to 50% exceedances of the low-risk trigger which would likely be attributed to the low levels of water and ongoing dewatering.

Version No:	Version Date:	Document title	Seqwater Document Number	Page:
1	16/06/2026	Quarterly Compliance and Monitoring Summary Report for the Coordinator-General	LMDIP-10000-GNL-ENV-REP-00004	41 of 84

- **Nitrate** showed no exceedances of the low-risk trigger and 100% of exceedances of the high-risk trigger which again was attributed to the low levels of water in the stilling basin.
- **TP** low risk trigger showed an increase to 50% of exceedances and conforming with 100% of high-risk triggers.
- **TSS** –showed 100% non-conformances against the low-risk trigger and no exceedances of the high-risk trigger.
- **SPC/EC** is being monitored at all sites. There is no criteria for EC so there are no exceedances to monitor against.

1.2.3. Ammonia, Nitrate and Phosphate water quality trends over time

Figures 8, 9 and 10 display the historical inclusive water quality trends at all monitoring locations.



Version No:	Version Date:	Document title	Seqwater Document Number	Page:
1	16/06/2026	Quarterly Compliance and Monitoring Summary Report for the Coordinator-General	LMDIP-10000-GNL-ENV-REP-00004	42 of 84

Figure 8: Number of exceedances of ammonia, nitrate and phosphate at the main body of the impoundment of Lake Macdonald (I1, I2 and I3)

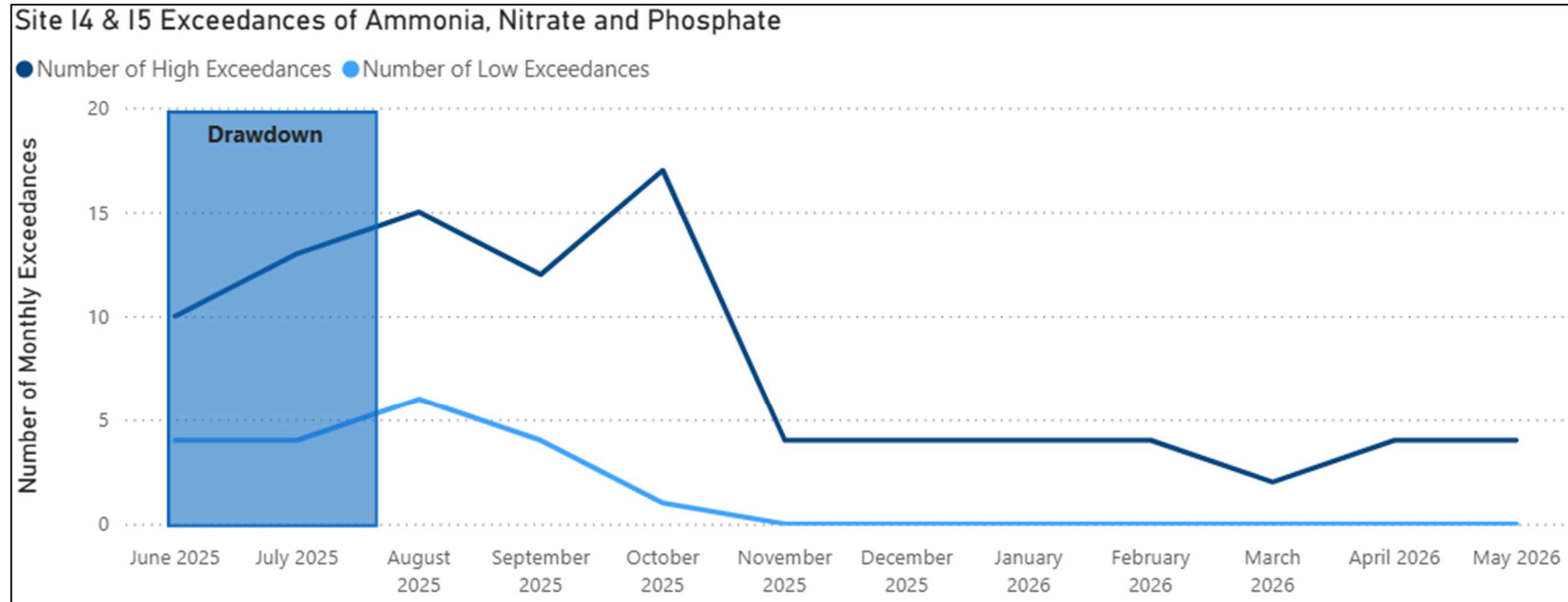


Figure 9: Number of exceedances of ammonia, nitrate and phosphate at the upper reaches of Lake Macdonald at sites I4 and I5

Version No:	Version Date:	Document title	Seqwater Document Number	Page:
1	16/06/2026	Quarterly Compliance and Monitoring Summary Report for the Coordinator-General	LMDIP-10000-GNL-ENV-REP-00004	43 of 84

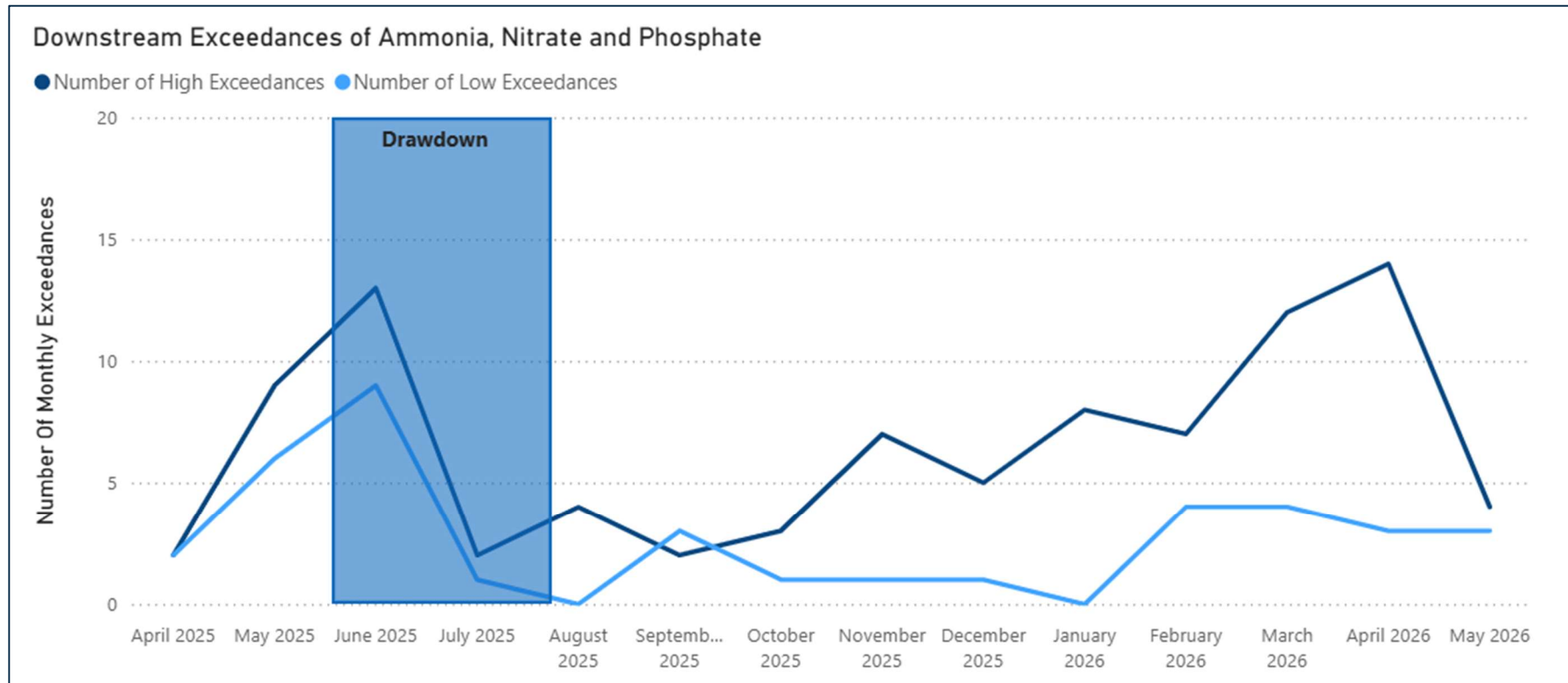


Figure 10: Number of exceedances of ammonia, nitrate and phosphate downstream at sites DS01, DS02, DS03 and DS04.

Version No:	Version Date:	Document title	Seqwater Document Number	Page:
1	16/06/2026	Quarterly Compliance and Monitoring Summary Report for the Coordinator-General	LMDIP-10000-GNL-ENV-REP-00004	44 of 84

The data graphed above in Figures 8, 9 and 10 indicate the trends of nutrients from the start of project activities until the end of this reporting period. Figure 9 highlights a continued stabilisation of exceedances in the upper reaches. Figure 8 also shows a similar trend in the main impoundment (I1, I2 and I3) of Lake MacDonald. The increase in nutrient exceedances observed in March and April is attributed to the large rainfall event on the 9-10th of March, which resulted in overtopping of the Dam Spillway and increased nutrient runoff input from the local catchment area. A similar increase in high exceedances was observed downstream over March and April coinciding with the overtopping of the spillway. Downstream sites show a subsequent decrease in low and high exceedance numbers in the month of May, as seen in Figure 10.

2. SQP Habitat monitoring

There is a total of six habitat monitoring sites. These include, three downstream sites located within Six Mile Creek (SMCDS01, SMCDS02 and SMCDS04), two upstream control sites (SMCUS01 and CU02) and a single lake site – see Figure 11. Within each site data is collected along a 200m long section of creek. The F&FDMP lists habitat triggers relevant to each of the habitat monitoring elements and have also been included below in Table 10. An analysis of the habitat monitoring data against the habitat trigger values found that no trigger values were exceeded during this quarterly monitoring period.

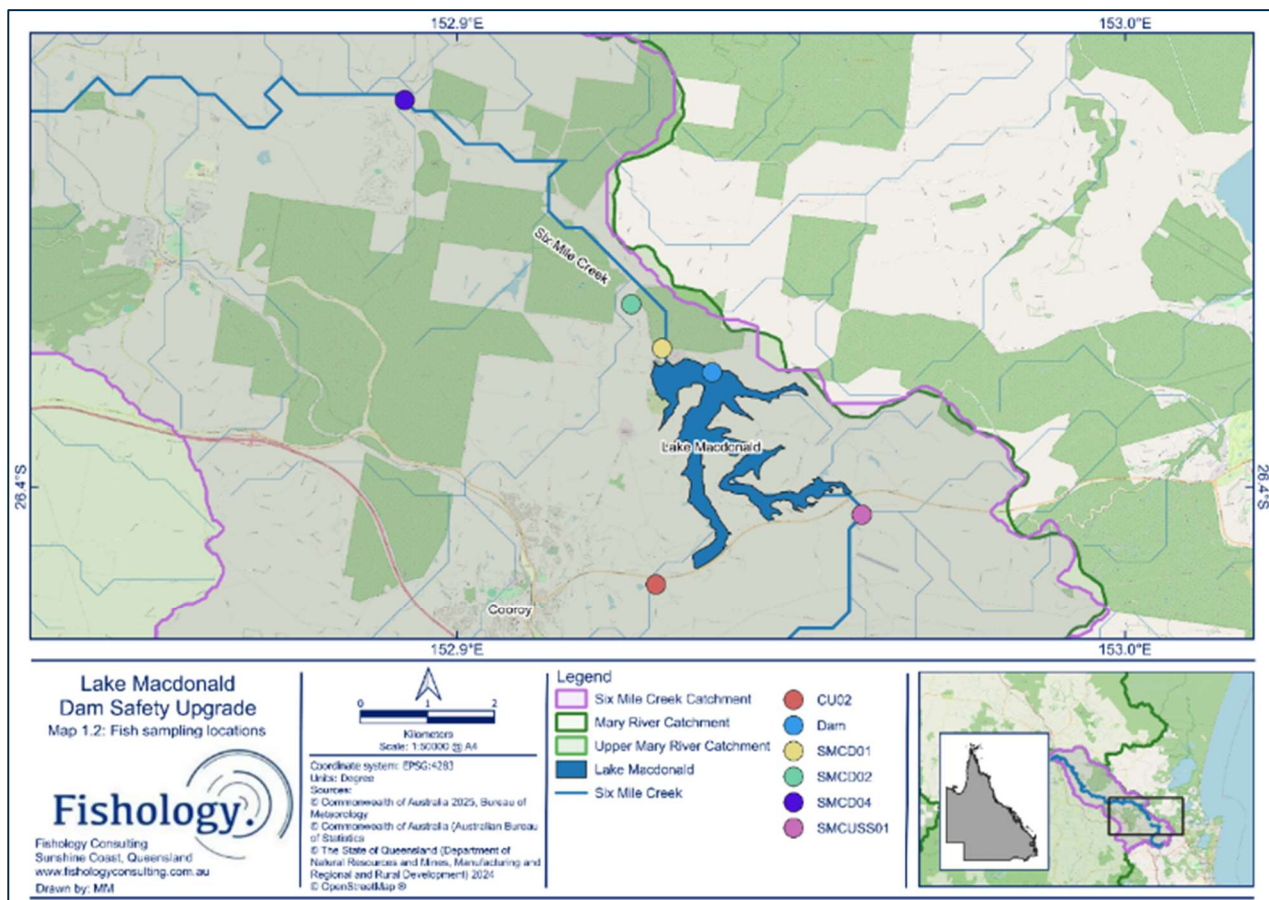


Figure 11: SQP Quarterly Habitat survey sites

Version No:	Version Date:	Document title	Seqwater Document Number	Page:
1	16/06/2026	Quarterly Compliance and Monitoring Summary Report for the Coordinator-General	LMDIP-10000-GNL-ENV-REP-00004	45 of 84

Table 10: Habitat Triggers

Monitoring Component	Trigger	Rationale for Trigger
Photo point monitoring	No trigger	Photos taken to aid interpretation of other indicators and as a permanent record of site conditions
Bank height (m)	Bank height must be >5% of water height.	Bank height is approaching bank full capacity.
Velocity (m/s)	At least one velocity reading (i.e. surface or bed at either mid-channel, left bank or right bank) at each site is <0.3 m/s or be comparable with baseline data recorded during similar sized events. Re-assess following <i>baseline phase</i> .	Based on prolonged swimming speed water velocity thresholds for native fish known from Six Mile Creek (Kapitzke, 2018)
Cross-sectional depth profile	Mean and maximum water depths at each site to be within baseline range, pending rainfall influences. Mean and maximum bank depths at each site to be within baseline range (top of bank to bed level)	Deep pools likely key habitat for Mary River cod, and important refugia for aquatic fauna during low flow periods.
Water Quality measured in situ	As per low and high triggers	Water quality conditions are maintained in baseline condition
Bed substrate composition (percent of size classes)	Percent cover of each substrate size class no more than 25% beyond baseline range	When substrate composition is >50% different from the baseline range it suggests a notable change in substrate composition.
Aquatic plant (percent cover)	Percent cover of aquatic plants no less than 25% of baseline minimum	Where aquatic plant cover is 25% lower than minimum baseline value, it suggests a notable decrease in aquatic plant cover.
Riffles (percent cover)	Percent cover of riffles no more/less than 25% of baseline range	When riffle extent is >50% different from baseline range it suggests a notable change in riffle extent
Bank erosion	No observed increase in erosion from baseline	Any observed area of new bank erosion requires investigation
Bed erosion	No observed increase in erosion from baseline	Any observed area of new bed erosion requires investigation
Percentage of large wood debris	Presence/cover of LWD within site reduces by >10%	This trigger indicates if the release has potential to change distribution and configuration of instream habitat features

Version No:	Version Date:	Document title	Seqwater Document Number	Page:
1	16/06/2026	Quarterly Compliance and Monitoring Summary Report for the Coordinator-General	LMDIP-10000-GNL-ENV-REP-00004	46 of 84

Table 11: Mean Water Quality results from each habitat site

Location	Electrical conductivity (µS/cm)	Temperature (°C)	DO (% saturation)	DO (mg/L)	Turbidity (NTU)	pH
SMCD01 - Six Mile Creek						
April	85.0	26.2	69.1	5.60	3.8	7.14
SMCD02 - Six Mile Creek						
April	93.3	24.7	51.5	4.15	4.7	6.97
SMCD04 – Six Mile Creek						
April	110	22.9	52.3	4.04	6.2	6.91
SMCUS01 - Six Mile Creek upstream of Lake Macdonald (control)						
April	76.6	23.2	62.8	5.59	-	6.70
CU02 – Cooroy Creek upstream of Lake Macdonald (control)						
April	81.6	22.7	42.1	3.54	3.8	6.33

Table 11 shows the water quality results collected by the SQP which indicated the following trends:

- Recorded conductivity (µS/cm) was low within all sites. This is likely to be a regional influence on water quality and is not concerning.
- Dissolved oxygen (% saturation) concentrations were moderately low within sites SMCD02, SMCD04 and CU02.
- Turbidity levels were good within all sites. A probe failure occurred within SMCUS01 and no reading was recorded

3. Flora and Fauna (Aquatic)

Ongoing aquatic fauna, habitat and biomass assessments, water quality, platypus E-DNA sampling and camera trapping and fish salvage works occurred throughout the monitoring period by the project SQP. The activities completed are summarised in Table 12.

Table 12: Aquatic Fauna and Salvage Program of Works Summary

Timing	Activity	F&FDMP Requirement	Duration
April	Habitat site assessments upstream control sites (SMCUS01 and CU02) downstream Six Mile Creek sites (SMCDS01, SMCDS02, SMCDS04) and lake site	Section 6.3 (Table 6.1)	Quarterly
April	Download of platypus camera traps	Section 5.5.3	Quarterly
May	Camera trap analysis from last quarter	Section 5 Table 5.2	Quarterly
April	eDNA platypus sampling	Section 5	Quarterly
March - April	Fish salvage and relocation undertaken within coffer dam	Section 5	As required

Version No:	Version Date:	Document title	Seqwater Document Number	Page:
1	16/06/2026	Quarterly Compliance and Monitoring Summary Report for the Coordinator-General	LMDIP-10000-GNL-ENV-REP-00004	47 of 84

Timing	Activity	F&FDMP Requirement	Duration
April	Fish condition within lake	Section 5 - Table 5.2	Quarterly

3.1. Fish community monitoring

During the current monitoring event a total of 6,955 fish representing 11 fish species were recorded (caught and observed) (Table 13). This fish catch data is represented by 8 native fish species, a single pest fish species (Mosquito fish, *Gambusia holbrooki*) and two native fish species that are described as translocated outside their natural range. This included Southern saratoga (*Scleropages leichardti*) and barred grunter (*Amniataba percoides*).

All fish captured during the survey are considered common in southeastern QLD (Purse *et al.* 2004) and no threatened or listed fish species were captured. During the survey incidental catches of seven turtles occurred within the small mesh fyke nets, these included six Kreft’s turtles and one broad shell turtles.

3.1.1. Small bodied fish communities

Small-bodied fish species are a group of smaller fish that obtain maximum sized of under approximately 80mm in size. A total of 1,629 small-bodied fish species representing four species were captured during the monitoring event (Table 13). Fly specked hardyhead (*Craterochalus stercusmuscarum fulvus*) and western carp gudgeon (*Hypseleotris klunzingeri*) were the most abundant representing 96% of all small-bodied fish captured. Glassfish (*Ambassis agassizii*) were common, while crimson spotted rainbowfish (*Melanotaenia duboulayi*) were rare.

3.1.2. Large bodied fish communities

A total of 5,326 large-bodied fish species representing six species were recorded during the monitoring event). Large-bodied fish are those over 200mm in size. Species captured included bony bream (*Nematalosa erebi*), banded grunter (*Amniataba percoides*), freshwater catfish (*Tandanus tandanus*), long finned eels (*Anguilla reinhardtii*), Australian bass (*Perkalates novemaculeata*) and saratoga (*Scleropages leichardti*).

Large-bodied fish communities were dominated by bony bream with this species accounting for 98% of all large-bodied fish caught during the two surveys. The current survey recorded fewer bony bream than the previous two surveys. Over time surveys have recorded variable abundance of this species. Recorded variability may be related to a several factors, including life history status at the time of the survey (bony bream are a short-lived species), the distribution of fish at the time of the survey (bony bream could be sitting deep within the dam beyond the range of boat electrofishing). A reduction in bony bream density could also be related to the large spilling event that occurred in March 2026 prior to field surveys. Moderate numbers of bony bream were captured in the stilling basin after the event, indicating that bony bream moved downstream into Six Mile Creek during this event.

Version No:	Version Date:	Document title	Seqwater Document Number	Page:
1	16/06/2026	Quarterly Compliance and Monitoring Summary Report for the Coordinator-General	LMDIP-10000-GNL-ENV-REP-00004	48 of 84

Table 13: Fish community results from the current monitoring event

FAMILY		Total
<i>Fish species</i>	Common name	
<i>Small-bodied fish species</i>		
AMBASSIDAE		
<i>Ambassis agassizii</i>	Glassfish	67
ATHERINIDAE		
<i>Craterochalus stercusmuscarum</i>	Flyspecked hardyhead	905
ELETRONIDAE		
<i>Hypseleotris klunzingeri</i>	Carp gudgeon	655
MELANOTAENIIDAE		
<i>Melanotaenia duboulayi</i>	Eastern rainbowfish	2
<i>Large-bodied fish species</i>		
ANGUILLIDAE		
<i>Anguilla reinhardtii</i>	Long finned eel	32
CLUPEIDAE		
<i>Nematalosa erebi</i>	Bony bream	5,234
OSTEOGLOSSIDAE		
<i>Scleropages leichardti</i>	Southern Saratoga	4
PERCICHTHYIDAE		
<i>Macquaria novemaculeata</i>	Bass	15
PLOTOSIDAE		
<i>Tandanus tandanus</i>	Freshwater catfish	13
TERAPONTIDAE		
<i>Amniataba percooides</i>	Banded grunter	28
Turtles		
<i>Emydura macquarii krefftii</i>	Krefft's short-necked turtle	6
<i>Chelodina expansa</i>	Broad shell turtle	1
<i>Pest fish species</i>		
POECILIIDAE		
<i>Gambusia holbrooki</i>	Eastern Mosquitofish	1
Total fish catch		6,956
Small-bodied fish		1,629
Large-bodied fish		5,326
Turtle catch		7

Version No:	Version Date:	Document title	Seqwater Document Number	Page:
1	16/06/2026	Quarterly Compliance and Monitoring Summary Report for the Coordinator-General	LMDIP-10000-GNL-ENV-REP-00004	49 of 84

3.1.3. *Fish communities over time*

A summary of fish communities recorded over time is presented in Table 14. A total of 17 fish species have been recorded in Lake Macdonald during all survey and fish salvage events. These included 13 native fish species, two translocated native fish species and two pest fish species. During all four monitoring events a total of 58,783 fish have been recorded (both caught and observed).

Monitoring indicates that flathead gudgeons and rainbowfish populations have declined since the lake drawdown. Lake habitats have changed from a macrophyte (combomba) dominated lake to the present, where aquatic plants are nearly absent. This would have implications for fish species such as rainbowfish that rely mostly on aquatic plants to for egg laying and reproduction (Goman and Bray, 2022).

Fish community monitoring undertaken this quarter found a reduction in the abundance of several fish species, compared to previous surveys. A reduction in fish abundance could be related to the large spilling event that occurred in March 2026 prior to field surveys. Fish salvage operations in the stilling basin after the spilling event indicate that fish had moved downstream in this event. A reduction in fish biomass is a natural occurrence within dams.

Table 14 displays a summary of electrofishing and fyke net data collected during baseline and all monitoring events. (T) indicates a fish species that are native to Australia but not indigenous to the region. A single Mary River cod was recorded in fish salvage data and included in this table (*). A single lungfish was captured (and released at the capture location) during the turtle survey and included in data summary. For context lake drawdown and changes to lake habitats occurred in June 2025.

Version No:	Version Date:	Document title	Seqwater Document Number	Page:
1	16/06/2026	Quarterly Compliance and Monitoring Summary Report for the Coordinator-General	LMDIP-10000-GNL-ENV-REP-00004	50 of 84

Lake Macdonald Dam Improvement Project
Quarterly Compliance and Monitoring Summary Report for the Coordinator-General

Table 14: Fish Communities Over Time

Fish species	Baseline December 24	Survey 1 August 25	Survey 2 November 25	Survey 3 January 2026	Survey 4 April 2026	Total
Small-bodied fish species						
Carp gudgeon	976	3,616	1,360	1,633	655	8,240
Crimson spotted rainbowfish	51	0	5	7	2	65
Flathead gudgeon	7	0	0	0	0	7
Flyspecked hardyhead	2,732	4,106	2,326	1,163	905	11,232
Glassfish	2,660	600	1,276	629	67	5,232
Purple spotted gudgeon	2	0	0	0	0	2
Large Bodied fish						
Australian bass	3	15	13	30	15	76
Banded grunter (T)	223	257	42	122	28	672
Boney bream	3,886	453	10,509	12,211	5,234	32,293
Freshwater catfish	57	26	8	24	12	127
Long finned eel	104	26	31	36	32	229
Lungfish	0	0	0	1	0	1
Mary River cod	1*	0	0	0	0	0
Southern saratoga (T)	13	2	3	12	4	34
Spangled perch	0	0	2	0	0	2
Pest fish species						
Mosquitofish	529	0	23	7	1	560
Platy	71	0	0	0	0	71
Total catch (EF and fyke)	11,243	9,102	15,609	15,874	6,955	58,783
Fish per 100 EF seconds	35	67	134	196	74	101
Large bodied fish catch	4,286	779	10,608	12,436	5,326	33,434
Small bodied fish catch	6,428	8,322	4,967	3,432	1,629	24,778
Recorded native diversity	12	9	11	9	8	13

Version No:	Version Date:	Document title	Seqwater Document Number	Page:
1	16/06/2026	Quarterly Compliance and Monitoring Summary Report for the Coordinator-General	LMDIP-10000-GNL-ENV-REP-00004	51 of 84

3.2. Fish Condition

Length and weight data for four large bodied species are presented within Table 15. The fish species used in this analysis represent a variety of trophic levels within the lake. For example, both bass and saratoga are euryphagic carnivores, bony bream are detritivore / algivores and banded grunter are benthic omnivores (Pusey et al., 2004). Having a variety of trophic levels in this analysis is relevant to assessing the overall health and condition of the lake fish community.

Fulton's condition factor (K) is a numerical value that indicates the health and wellbeing of fish, providing insights into its fat reserves and overall condition. Higher condition scores indicate that fish are in better condition with higher energy reserves, as a result of a good food supply, suitable water quality and environmental conditions. Lower values may indicate poor growth conditions, stress or that the fish is in a post spawning condition. Results in Table 15 include the baseline data and the results of each subsequent monitoring event so that fish condition can be compared over time.

The fish condition data scores and length weight analysis showed the following trends:

- Bass have a relatively restricted size range within Lake Macdonald, as they have not been stocked for a long period of time (stocking is required as bass cannot reproduce within the lake, due to life history requirements that include migration to the upper parts of the estuary for spawning). The condition of bass has remained relatively stable over time with lower condition recorded during the previous survey (January 2026). Visual observations indicate that the bass in the lake are healthy and in good condition.
- A relatively small sample size of saratoga has been available over time, therefore some caution is required in interpreting the data from this species. The condition of saratoga remained stable during this monitoring period. Large number of bony bream and small bodied fish are present in the dam providing abundant prey for this species.
- A large range of bony bream sizes were presented within the catch data. The condition of Bony bream remains stable and is better than that recorded during the baseline survey.
- The condition of banded grunter has remained relatively stable over time with a slight increase during the previous two events.

Version No:	Version Date:	Document title	Seqwater Document Number	Page:
1	16/06/2026	Quarterly Compliance and Monitoring Summary Report for the Coordinator-General	7225-JHG-REP-SQ-001[2]	52 of 84

Table 15: Mean, standard error (S.E.), minimum (min.) and maximum (max) length, weight and condition of fish captured from Lake Macdonald. Weight data on bony bream focussed on larger fish >100mm.

Species	Sample size	Length (mm)		Weight (g)		Fulton's condition factor (K)
		Mean (±S.E.)	Min. - Max.	Mean (±S.E.)	Min. - Max.	
<i>Baseline data (December 24)</i>						
Australian bass	35	375 (±5)	300-460	1,039 (± 41)	735-1112	1.91 (±0.14)
Saratoga	9	625 (±24)	400-725	2645 (±363)	1040-4648	0.98 (±0.1)
Bony bream	339	137 (±3)	32-390	72 (±7)	0.5-1055	1.67 (±0.33)
Banded grunter	79	115 (±2)	16-166	33 (±2)	8-100	1.96 (±0.31)
<i>Survey 1 (August 2025)</i>						
Australian bass	25	416 (±7)	340-494	1500 (±85)	786-2760	2.03 (±0.15)
Saratoga	0	-	-	-	-	-
Bony bream	180	143 (±4)	65-410	87 (±11)	6-1350	1.86 (0.33)
Banded grunter	20	128 (±5)	85-165	44 (±5)	10-85	1.92 (0.17)
<i>Survey 2 (November 2025)</i>						
Australian bass	12	427(±11)	352-494	1590 (±146)	770-2760	1.98 (±0.15)
Saratoga	19	634 (±15)	504-740	2820 (±285)	1210-4020	1.06 (±0.23)
Bony bream	266	107 (±3)	28-305	31 (±4)	0.5-440	1.59 (0.32)
Banded grunter	31	117 (±4)	71-151	31 (±3)	8-60	1.75 (±0.26)
<i>Survey 3 (January 2026)</i>						
Australian bass	25	400 (±5)	345-445	1200 (±48)	728-1705	1.48 (±0.02)
Saratoga	3	541 (±81)	419-696	1800 (±902)	657-3582	2.03 (±1.1)
Bony bream	197	98 (±3)	45-292	26 (±4)	3-354	1.74 (0.02)
Banded grunter	15	106 (±5)	72-140	25 (±3)	6.5-51	1.94 (±0.05)
<i>Survey 4 (April 2026)</i>						
Australian bass	13	402 (±7)	347-391	1230 (±70)	672-1065	1.81 (±0.05)
Saratoga	2	538 (±20)	519-558	1681 (±191)	1490-1872	1.07 (±0.01)
Bony bream	228	105 (±3)	47-310	36 (±5)	2-444	1.75 (±0.05)
Banded grunter	23	97 (±7)	43-158	24 (±4)	3-79	2.14 (±0.05)

3.3. Turtle monitoring

Project requirements for turtle monitoring are set out in Table 5.3 of the F&FDMP:

Bi-annual turtle monitoring of turtle condition in lake using length weight measurements compared to baseline and evaluation survey data.

No turtle monitoring was required to be conducted in this period and is scheduled for July 2026.

3.4. Platypus monitoring

The F&FDMP sets out the project requirements to undertake platypus surveys during the construction phase of the project.

The baseline platypus surveys determined the known and likely locations of platypus burrows and platypus activity within the lake and tributaries. The baseline surveys were undertaken to assist with management of this species, during the dewatering and construction phases of the project.

3.4.1. eDNA sampling and analysis

Environmental DNA (eDNA) methods are being used routinely to monitor aquatic animals including fish, amphibians and mammals across waterways, estuaries and wetlands throughout Australian catchments. eDNA surveys can be a highly sensitive and cost-effective technique for determining the presence of aquatic species (and those species around an aquatic environment) by detecting species-specific DNA in the water. eDNA surveys can be used to detect a variety of targeted species using a qPCR approach. This method has been repeatedly demonstrated to be more sensitive than traditional methods, particularly for sparse, elusive, or cryptic species, including platypuses (Lugg et al. 2018). EnviroDNA from Victoria have been chosen as a project partner for undertaking eDNA lab work for the project.

Water samples were collected in April 2026 following the sampling protocol provided by EnviroDNA. These results will be reported on in the next quarterly compliance report to align with the camera trapping data and review/compare any trends more accurately with both surveys.

3.4.2. Active platypus burrow searches

While no active searches were undertaken it is relevant to note that no confirmed platypus burrow sightings have been made during any of the eDNA or camera trapping activities

3.4.3. Camera trapping

As part of the baseline surveys, 10 camera traps (Browning DCL Pro Nano) were installed on the 11th of March 2025. Five were installed along Six Mile Creek upstream of Cooroy Noosa Road and the remaining five within Cooroy Creek downstream of the Cooroy Noosa Road. Due to ongoing tampering and theft of cameras, three new cameras were installed along Six Mile Creek in this last monitoring period.

- A review of 43-time lapse videos (100% of the total video captured was viewed)
- 20529 motion trigger images (100% of the motion trigger images captured).

These were analysed with a total of seven platypus were recorded during this period across all cameras. Given the number of minutes of analysed time lapse footage, the average number of platypus observations per minute of analysed footage is for:

- Six Mile Creek – 0.06 platypus per minute
- Cooroy Creek – 0.02 platypus per minute

Over the period of deployment, two camera traps across both systems detected platypus activity, with the most detections in Six Mile Creek. Overall, the number of platypus detections increased over last period. This is despite a significant number of faults or lost cameras during the period.

Total detections for Cooroy Creek during the period was three, an increase from the last period (1). A total of four detections were made in Six Mile Creek over the same period, again this is more than the last period (2)

Version No:	Version Date:	Document title	Seqwater Document Number	Page:
1	16/06/2026	Quarterly Compliance and Monitoring Summary Report for the Coordinator-General	7225-JHG-REP-SQ-001[2]	54 of 84

The monitoring results obtained by the cameras suggest platypus activity in both systems is still occurring within similar locations recorded to date with a slight increase in observations during this quarter.



Figure 12: Platypus detected on Camera 5 in Cooroy Creek

3.5. Fish salvage

Two fish salvage event occurred during this monitoring period:

- Fish salvage was undertaken within the stilling basin.
- Fish salvage was undertaken within the pool directly below the dam spillway.

3.5.1. Stilling Basin Fish Salvage

The stilling basin is not considered a suitable environment for aquatic fauna due to the constant construction activities and lack of connectivity to other waterbodies. A fish salvage was undertaken in the stilling basin area over a three-day period between 31-3-2026 and 2-4-2026 with the results shown in Table 16.

Three techniques were used for the capture of fish and turtles from the stilling basin. These included boat electrofishing, fyke netting (large mesh and small mesh) and turtle trapping. Boat electrofishing is a technique that uses pulsed direct current (DC) to stun and capture fish. Boat electrofishing is undertaken using a purpose-built vessel that contains a generator powered Grassl electrofishing unit (EL65 II).

During the salvage operation fyke nets and turtle traps were set and checked during the day and following overnight setting. Turtle traps were baited with pilchards. Nets contained polystyrene floats to assist any air breathing fauna captured. During the salvage operation all captured fish and turtles were immediately transferred to a live well, located on the electrofishing vessel. Every hour or when the live well reached capacity fish and turtles were transferred into a 1000 litre container and lifted via excavator to the coffer dam wall, counted and released upstream into Lake Macdonald.

Version No:	Version Date:	Document title	Seqwater Document Number	Page:
1	16/06/2026	Quarterly Compliance and Monitoring Summary Report for the Coordinator-General	7225-JHG-REP-SQ-001[2]	55 of 84

Table 16: Summary of fish salvage from stilling basin

FAMILY	Common name	Total
<i>Fish species</i>		
<i>Small-bodied fish species</i>		
AMBASSIDAE		
<i>Ambassis agassizii</i>	Olive perchlet	612
ATHERINIDAE		
<i>Craterochalus stercusmuscarum fulvus</i>	Flyspecked hardyhead	242
ELETRONIDAE		
<i>Hypseleotris sp.</i>	Carp gudgeon	1,159
<i>Large-bodied fish species</i>		
ANGUILLIDAE		
<i>Anguilla reinhardtii</i>	Long finned eel	9
CLUPEIDAE		
<i>Nematalosa erebi</i>	Boney bream	659
PLOTOSIDAE		
<i>Tandanus tandanus</i>	Freshwater catfish	41
TERAPONTIDAE		
<i>Amniataba percoides</i>	Banded grunter	545
Turtles		
<i>Emydura macquarii krefftii</i>	Kreft turtle	13
Total fish		3,265
Total turtles		13

3.5.2. Spillway fish salvage

A total of 2,388 fish were captured during the fish salvage operation below the spillway. This total included 1,492 small-bodied fish, 890 large-bodied fish and 6 pest fish (Refer to Table 17).

Two threatened fish species were captured during the operation; these included a single small Mary River cod (*Maccullochella mariensis*) and two large lungfish (*Neoceratodus forsteri*). All fish were released in good condition immediately after capture into Six Mile Creek. Pest fish were euthanised as per fisheries permit conditions and buried.

Table 17: Summary of fish salvage from spillway

FAMILY		Total
<i>Fish species</i>	Common name	
<i>Small-bodied fish species</i>		
AMBASSIDAE		
<i>Ambassis agassizii</i>	Olive perchlet	20
ATHERINIDAE		
<i>Craterochalus stercusmuscarum</i>	Flyspecked hardyhead	300
ELETRONIDAE		
<i>Hypseleotris sp.</i>	Carp gudgeon	1170
MELANOTAENIIDAE		
<i>Melanotaenia duboulayi</i>	Rainbowfish	2
<i>Large-bodied fish species relocatable</i>		
ANGUILLIDAE		
<i>Anguilla reinhardtii</i>	Long finned eel	17
CERATODONTIDAE		
<i>Neoceratodus forsteri</i>	Lungfish	2
CLUPEIDAE		
<i>Nematalosa erebi</i>	Boney bream	685
OSTEOGLOSSIDAE		
<i>Scleropages leichardti</i>	Southern Saratoga	2
PERCICHTHYIDAE		
<i>Maccullochella mariensis</i>	Mary River cod	1
<i>Macquaria novemaculeata</i>	Bass	25
<i>Maquaria ambigua</i>	Golden perch	3
PLOTOSIDAE		
<i>Tandanus tandanus</i>	Freshwater catfish	25
TERAPONTIDAE		
<i>Amniataba percoides</i>	Banded grunter	67
<i>Leiopotherapon unicolor</i>	Spangled perch	63
<i>Pest fish species</i>		
CHICHLIDAE		
<i>Oreochromis mossambicus</i>	Tilapia	
Total fish		2388

3.5.3. Fish salvage conclusion

Two fish salvage operations were undertaken during the current monitoring period. These occurred within the stilling basin and within the pool below the old spillway. Both operations were successfully implemented, and fish welfare was considered good during both operations. Additional fish salvage efforts in the stilling basin will be required after any future cofferdam overtopping events.

3.6. Aquatic plant cover

During the current monitoring period aquatic plants were recorded not recorded within any of the riverine sites. This is consistent with the baseline data and data collected during initial project surveys (FRC environmental, 2018), that also found low occurrence of submerged aquatic macrophytes found within the riverine survey sites.

Prior to lake drawdown Cabomba was highly abundant within Lake Macdonald. Cabomba is a category three restricted invasive plant under the Biosecurity Act 2014. Monitoring events conducted within the dam have found that Cabomba beds have mostly disappeared from the main basin and the middle arms of the dam after dam lowering. Some beds of Cabomba have been observed in the upper tributaries of the dam (in Six Mile Creek and Cooroy Creek)

Over the previous summer period the dam edges were rapidly colonised by native aquatic plants and terrestrial grasses. The native emergent plants were observed included *Persicaria* spp, *Cyperacia* spp, *frogsmouth (Philydrum lanuginosum)*, and water primrose (*Ludwidia peploides*). This vegetation was fully inundated during the March rain events resulting in some dieback, particularly the terrestrial grasses.

Mat rush (*Lomandra* sp.) was common within all creek habitat sites ranging from 23% bank coverage to 60% coverage. No change to the abundance of this plant was observed during monitoring. The mat rush is common emergent terrestrial riparian plant that forms a valuable component of the riparian zones of many rivers, stabilising soils and banks and preventing erosion.

3.7. Riffle habitats

A small riffle habitat is present within SMCD02 under the bridge. This habitat is not natural but occurs as a result of bed scour material added to the site during bridge construction. Small riffle habitats occur within both the upstream sites, SMCUS01 and CU02. The percent of these habitats varies with the different flows experienced in these sites.

3.8. Bank erosion

Bank erosion was observed during the baseline survey within two of the survey sites including SMCD01 and SMCD02. These locations continue to be closely monitoring during each monitoring event. As per previous reporting, erosion at these locations has worsened slightly but overall these embankments remain stable (despite recent high spilling flows). During this monitoring period no new areas of erosion were observed within any of the monitoring sites.

3.9. Instream woody habitat

To document instream wood habitat (IWH) the volume (m²) the length (m), diameter (m) and complexity of individual timber pieces were recorded. The results from the baseline and lake drawdown IWH calculations found that sites located within Six Mile Creek below lake Macdonald had the greatest timber loadings (SMCD04, SMCD02 and SMCD01), while less timber was found above the dam in the control sites (SMCUS01 and CU02).

The latest monitoring event documented no obvious changes to IWH habitats within the monitoring sites. As per previous events timber loads within the creek appear stable and highly imbedded within bed and banks of the creek.

Version No:	Version Date:	Document title	Seqwater Document Number	Page:
1	16/06/2026	Quarterly Compliance and Monitoring Summary Report for the Coordinator-General	7225-JHG-REP-SQ-001[2]	58 of 84

3.10. Bed substrata

Bed sediments were dominated by silt, sand, and gravel. Some coarser rock types were also found within SMCD01, SMCUS01 and CU02. No change was observed during the current monitoring period.

4. Flora & Fauna (terrestrial)

No vegetation clearing was completed in this monitoring period. No interactions with rare or threatened species were noted and no animal breeding places were tampered with or disturbed during this reporting period also. There was one incidental sighting of a koala in May in gum trees adjacent to the project outside the project boundary which was monitored and moved off on its own accord.

One day of weed treatment was undertaken by the project ecologist. No EVNT or Category 1 weeds were observed during these surveys.

There were no incidents with terrestrial fauna throughout the reporting period.

5. Traffic

5.1. Traffic count data

A traffic counter is set up on Lake Macdonald Drive, directly adjacent to the project site. The counter is designed to record class 3 and above vehicles only and does not include light/short vehicles or light/short vehicles towing boats, trailers or caravans, which are considered class 1 & 2 vehicles. The Austroads vehicle classification scheme categorises vehicles based on their axle count, length and configuration.

Traffic count data for the monitoring period recorded along Lake Macdonald Drive shows that a total of 4840 class 3 and above vehicles travelled over the counter, with 815 being directly attributed to the LMDIP project. This accounted to 16.8% of all recorded vehicles for the monitoring period.

Version No:	Version Date:	Document title	Seqwater Document Number	Page:
1	16/06/2026	Quarterly Compliance and Monitoring Summary Report for the Coordinator-General	7225-JHG-REP-SQ-001[2]	59 of 84

6. Noise & Vibration

6.1. Noise

6.1.1. Noise Objectives

The Project acoustic quality objectives are shown in Table 18 below and are derived directly from the Environmental Protection (Noise) Policy 2019 (Environmental Protection Act Qld 1994). As per the Environmental Protection (Noise) Policy 2019, noise data has been measured and assessed against the LA_{eq} objectives of: LA_{eq,adj,1hr}.

It is important to note that the Environmental Protection (Noise) Policy 2019 acoustic quality objectives are not representative of the surrounding environment and do not take into consideration any existing noise, such as traffic. The project daytime baseline of 55dB(A) was measured in 15-minute intervals in 2018 and is therefore a better metric to compare against rather than the objectives outlined in Table 18.

Table 18: Acoustic Quality Objectives

Sensitive Receptors	Time of Day	Acoustic Quality Objective (dB(A))			Environmental Value
		LA _{eq,adj,1hr}	LA _{10,adj,1hr}	LA _{1,adj,1hr}	
Residence (for outdoors)	Daytime and evening	50	55	65	Health and well-being
Residence (for indoors)	Daytime and evening	35	40	45	Health and well-being
	Night-time	30	35	40	Health and wellbeing, in relation to the ability to sleep

Note**LA_{eq} stands for A-weighted equivalent continuous sound level. It represents the constant noise level that would produce the same total sound energy as the fluctuation noise levels measured over a specified time period. In simpler terms, LA_{eq} provides an average noise level expressed in decibels (dB) that accounts for varying noise intensity over times.

6.1.2. Noise Monitoring Locations

During this reporting period, noise and vibration monitoring consisted of two main phases – standard construction works (6:30am-6:30pm Mon-Sat) and spillway demolition works (24/7 operations from 10 April - 24 April 2026).

During the standard construction works, noise monitoring was undertaken with two continuous noise loggers, one located inside a residence on Lake MacDonald Drive and another outside the facade of the residence adjacent to the Project.

Revised noise modelling was developed specific to the demolition works which indicated some potential increased impacts to residents along Highland Drive. For this reason, one of the continuous noise loggers was relocated from inside the property on Lake MacDonald Drive to outside a property along Highland Drive during the demolition period. An additional continuous noise logger (Site Hive) was deployed to assist in monitoring the noise impacts during the demolition phase. It was positioned on Lake MacDonald Drive adjacent to the closest sensitive receiver property boundary and monitored LA_{eq} noise levels and recorded noise events by taking a photo in the direction of the noise source, storing an audio recording of the event, and estimating the direction of noise source.

Version No:	Version Date:	Document title	Seqwater Document Number	Page:
1	16/06/2026	Quarterly Compliance and Monitoring Summary Report for the Coordinator-General	LMDIP-10000-GNL-ENV-REP-00004	60 of 84

Attended noise monitoring was also conducted throughout this reporting period to supplement the noise logger data and assess the construction noise influence in greater detail. Attended monitoring is measured in 15-minute intervals at representative sensitive receiver locations adjacent to the Project. A total of twenty-six attended noise monitoring events were conducted during this reporting period, including 4 events during standard construction works, and twenty-two events conducted during the demolition period. Attended noise monitoring locations are described in Appendix 1 and 2.

The noise and vibration monitoring locations are shown in Figure 13 below.



Figure 13: Noise and Vibration Monitoring Locations

Version No:	Version Date:	Document title	Seqwater Document Number	Page:
1	16/06/2026	Quarterly Compliance and Monitoring Summary Report for the Coordinator-General	LMDIP-10000-GNL-ENV-REP-00004	61 of 84

6.2. Noise Monitoring Results – Standard Construction Works

Data collected from the project noise loggers during the standard construction works continues to show slight exceedance of the acoustic quality objectives throughout the construction workdays (Mon-Sat 6:30am-6:30pm) as well as Sundays when no construction activities were occurring (Refer to Figure 13). In addition, the recorded noise levels were similar between workdays (average LA_{eq} 55.92) and non-workdays (average LA_{eq} 53.68) demonstrating minimal construction impact (Refer to Figures 14 and 15).

In the lead up to the demolition of the spillway, site activities were minimal, comprising mostly of general earthworks and the set up and commissioning of the mobile batch plant, as outlined in Table 2. These activities generated relatively low noise levels for the majority of this period, which was supported by the attended noise monitoring seen in Appendix B-1, which indicate that non-construction traffic accounted for over 70% of the noise recorded during the attended monitoring.

A similar pattern was observed following the completion of the demolition period, with non-construction traffic continuing to be the dominant noise source. During this time, construction-related activities, such as piling and activities on the working platform including rock placement, made up approximately 10-30% of the noise recorded during attended monitoring.

Recorded LA_{eq} (15mins) noise levels during the attended monitoring events ranged between 53-56dB(A). While piling using the vibration hammer did increase the LA_{eq} during the period when it occurred, these activities were typically short in duration, usually occurring for short intervals of 1-3 minutes at a time followed by 5-15 minutes of respite. Project-related truck movements occasionally resulted in elevated noise levels during attended noise monitoring however their contribution was less frequent than non-construction traffic, which incurred similar noise emissions from passing cars, particularly larger 4wd's or vehicles with trailers that were travelling at or above the 60km/h speed limit.

Importantly, it should be noted that no noise complaints were received during this reporting period.

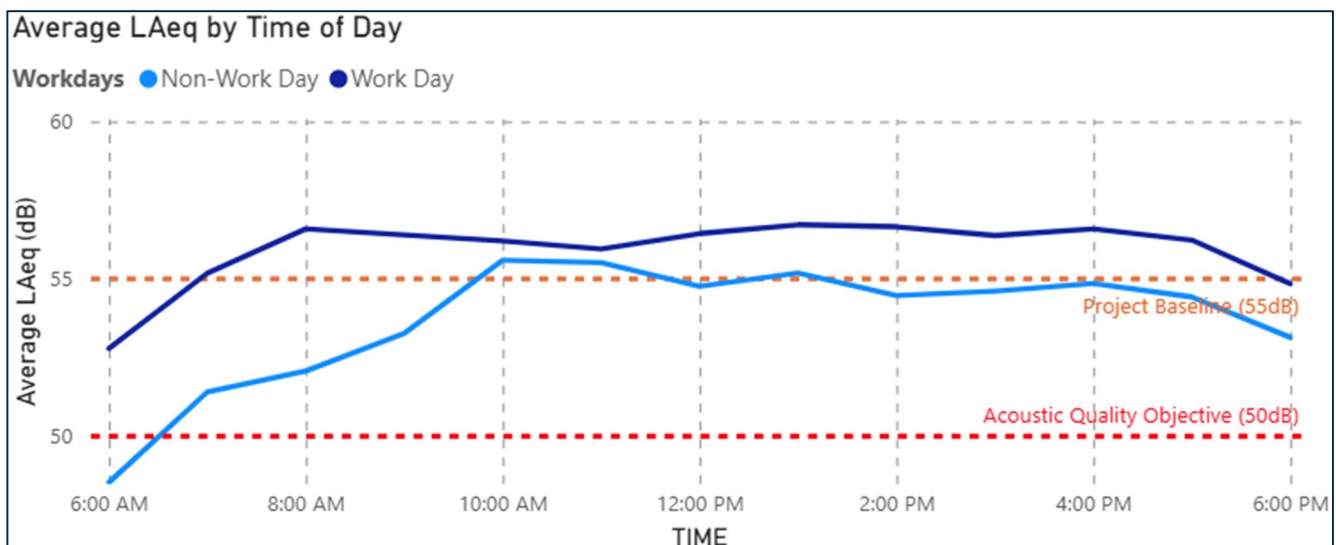


Figure 14: Average hourly LAeq by time of day during work hours (6:30am-6:30pm), during standard work-days (Monday to Saturday) and non-work days (Sunday).

Version No:	Version Date:	Document title	Seqwater Document Number	Page:
1	16/06/2026	Quarterly Compliance and Monitoring Summary Report for the Coordinator-General	LMDIP-10000-GNL-ENV-REP-00004	62 of 84

Work Day		Non-Work Day		Average LAeq	
Average LAeq 55.92		Average LAeq 53.68		Monday 56.25	Tuesday 56.51
				Wednesday 56.62	Thursday 56.35
				Friday 55.60	Saturday 54.18
				Sunday 53.68	
Work Day	Min LAeq 47.10	Work Day	Max LAeq 71.50		
Non-Work Day	Min LAeq 45.50	Non-Work Day	Max LAeq 66.00		

Figure 15: Average LAeq - 1hr between the hours 6:30am-6:30pm during standard work days (Monday to Saturday) and non-work days (Sunday).

6.3. Noise Monitoring Results – Spillway Demolition

Spillway demolition works involved 24/7 operations during the period 10 April to 24 April 2026. Extensive noise mitigation measures were implemented for these works which included temporary relocation offers for the most affected receivers, temporary noise screens, low noise construction methods and equipment, a noise shroud for concrete hammer and broadband reverse squawkers on all equipment. High impact noise activities were also planned for day works as much as possible with limited night-time rock hammering occurring.

Table 19 below, shows the average daytime and nighttime recorded noise levels during the demolition period at the various monitoring locations. At the closest receiver, the average LA_{eq} recorded during the daytime period was 69 dB(A) and the average LA_{eq} recorded during the nighttime period was 62 dB(A). While these noise levels were above the acoustic quality objectives, they were below the predicted noise levels of 74 dB(A), indicating that the mitigation measures in place were effective. Importantly, no noise complaints were received during the demolition works and the works were completed ahead of schedule.

Table 19: Average noise levels recorded during the spillway demolition

Location	Predicted Demolition dB(A)	Average Daytime LAeq (dBA) during the Demo Period	Average Nighttime LAeq (dBA) during the Demo Period
Acoustic Quality Objective	-	50	30*
Baseline	-	55	49
Site Hive (Lake Macdonald Dr)	74	69	62

Version No:	Version Date:	Document title	Seqwater Document Number	Page:
1	16/06/2026	Quarterly Compliance and Monitoring Summary Report for the Coordinator-General	LMDIP-10000-GNL-ENV-REP-00004	63 of 84

Noise Monitor 1 (Lake Macdonald Dr)	69	58	51
Noise Monitor 2 (Highland Dr)	55	51	46

*Note this is the indoor objective for residences. Monitoring was conducted outdoors and therefore noise levels would have been much lower indoors (approx. 10-35dB(A) depending on building). Alternatively, an outdoor nighttime objective of 45 dB(A) LA_{eq,1hr} is accepted as industry standard which is derived from the *DTMR Code of Practice Volume 2 - Construction Noise and Vibration – Table 3.2.1.1(a)*.

Figure 16 further displays the hourly LA_{eq} readings from the site hive over the demolition period. As can be seen, the noise levels stayed fairly consistent throughout the demolition period. No night works occurred on the 15-16th of April, hence the decrease in the night dB(A) to just below the target at 45dB(A). Periods of adverse weather are being shaded in blue on the telemetry graphs. Adverse weather is defined by defaults as 1mm or more of rain and/or 5 or more m/s wind speed. Noise monitoring is avoided during rain or strong winds as it generates false background noise – hence why there appears to be some gaps in the data presented.

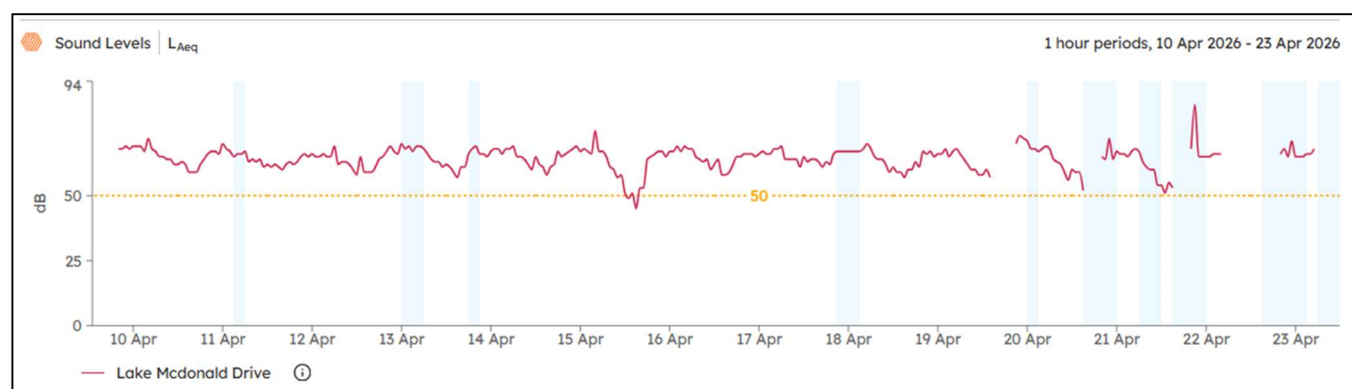


Figure 16: Site Hive LAeq Over the Demolition Period (1-Hour Intervals, daily averages)

On Highland Drive, noise levels recorded during the demolition period were generally similar to, or slightly lower than, those measured prior to the demolition period, with differences of 1-3dBA (Refer Figure 17). This indicates that the primary noise impacts were confined to Lake MacDonal Drive. Figure 17 also clearly shows the effectiveness of scheduling high-impact demolition works during the day and lower-impact activities at night.

Version No:	Version Date:	Document title	Seqwater Document Number	Page:
1	16/06/2026	Quarterly Compliance and Monitoring Summary Report for the Coordinator-General	LMDIP-10000-GNL-ENV-REP-00004	64 of 84

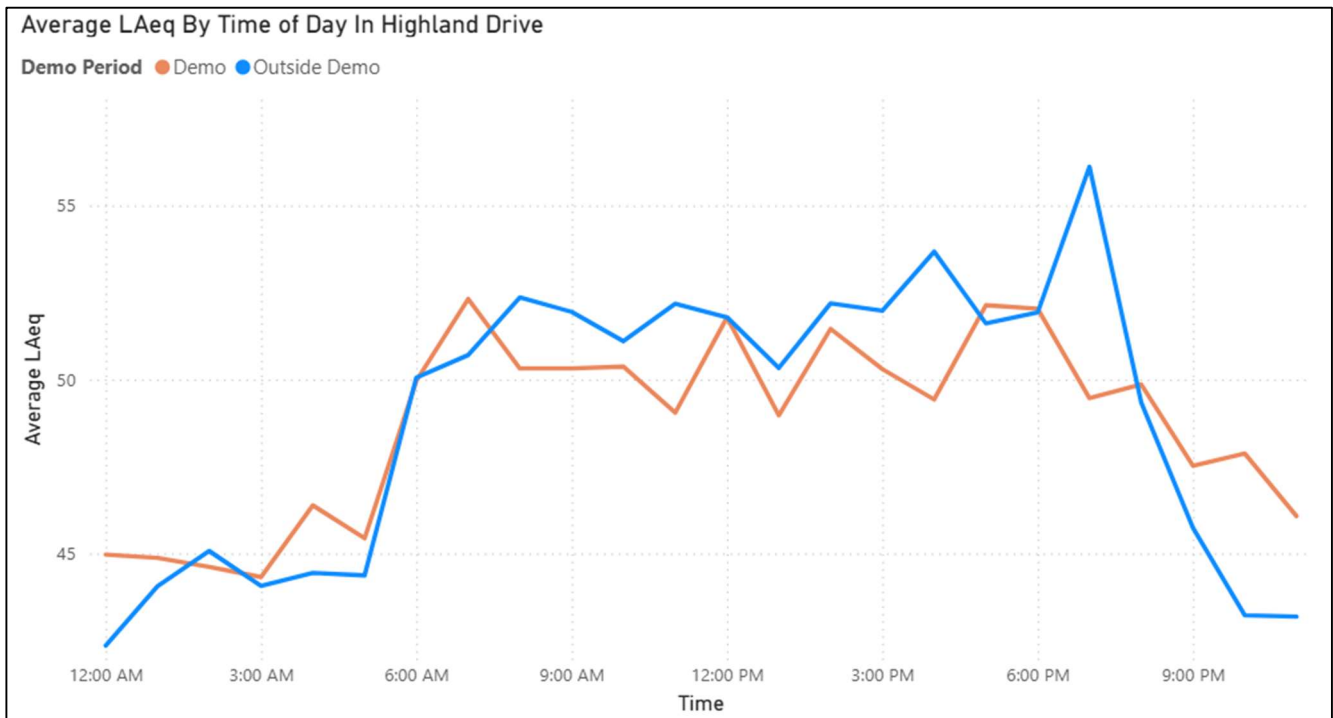


Figure 17: Comparison of the LA_{eq} average (1-Hour intervals) during the demolition period and outside the demolition period

Appendix B-2 summarises the attended monitoring conducted during the demolition period. Attended monitoring at nearby sensitive receivers found demolition activities to be intermittent and not an overly dominant or consistent noise source. Residential traffic was frequently louder than the construction activities, with passing light vehicles often exceeding the construction noise levels by approximately 5 dB(A). Daytime noise levels were frequently influenced more by external factors such as traffic, local residential activities (e.g. residential traffic, lawn mowing and power tools), and natural background. Demolition works were generally audible during the night or evening periods when surrounding residential and environmental noise levels decreased. As shown in Appendix 2, recorded LA_{eq} (15mins) noise levels during the demolition attended monitoring events ranged between 36 dB(A) and 67 dB(A).

6.4. Vibration

Vibration monitoring occurred at two locations during this reporting period (Refer to Figure 13).

Location 1: Monitoring was initially conducted at a residential property on Lake Macdonald Drive, where it was set up on a concrete pad which forms part of the home’s slab. Monitoring occurred at this location until the 7th of May, including the demolition period.

Location 2: The vibration monitor was relocated on the 7th of May to a nearby residential property on Lake Macdonald Drive. The purpose of the relocation was to allow the vibration monitor to be closer to the piling activities, as well as to reduce potential influences from non-construction activities.

Vibration is measured in terms of millimetres per second or mm/s. For human comfort a target of 2mm/s is set and for structural damage of structures or dwellings 5mm/s is the target.

Version No:	Version Date:	Document title	Seqwater Document Number	Page:
1	16/06/2026	Quarterly Compliance and Monitoring Summary Report for the Coordinator-General	LMDIP-10000-GNL-ENV-REP-00004	65 of 84

High-impact vibration activities occurred during the monitoring period. More specifically the demolition period from the 10th of April until the 24th of April, which included use of a hydraulic hammer, excavators and moxy truck movements. Vibratory piling also began on the working platform from the 27th of April.

No vibration exceedances were recorded during the demolition period. The maximum vibration level recorded during the demolition period was 1.84mm/s on the 15/04/2026 at 10:32am; however site logs indicate that this occurred during a scheduled break period. The next highest recorded vibration level was 0.89mm/s on 16 April 2026 at 9:59am.

There were no vibration exceedances caused by sheet piling or other construction activities during this monitoring quarter.

One non-construction exceedance was recorded during work hours; however site logs indicate that there was no sheet piling or any other high-impact construction activities occurring at that time. This result is shown in Table 20 below.

Table 20: Vibration results above human comfort level

Day	Date	Record End Time	Measured Vibration Level (PPV mm/s)	Comments	Human Comfort Target for Vibration (PPV mm/s)
Tuesday	05/05/2026	10:00:42	3.25	No sheet piling occurred at this time	2

Version No:	Version Date:	Document title	Seqwater Document Number	Page:
1	16/06/2026	Quarterly Compliance and Monitoring Summary Report for the Coordinator-General	LMDIP-10000-GNL-ENV-REP-00004	66 of 84

7. Dust and Air Quality

Air quality has been monitored throughout the period via dust deposition gauges and a real-time PM₁₀ monitor at the locations shown in Figure 17.

During the spillway demolition period (10 April - 24 April 2026), an additional Site Hive dust monitor was installed on Lake MacDonal Drive opposite the Project site's entrance and the other PM₁₀ monitor was temporarily relocated to the corner of Lake MacDonal Drive and Liane Drive to ensure broader monitoring of the potential dust impacts from the demolition.



Version No:	Version Date:	Document title	Seqwater Document Number	Page:
1	16/06/2026	Quarterly Compliance and Monitoring Summary Report for the Coordinator-General	LMDIP-10000-GNL-ENV-REP-00004	67 of 84

Figure 18: Air Quality Monitoring Locations (including PM₁₀ Monitor)

7.1. PM₁₀ Monitoring

PM₁₀ monitoring was undertaken using a Cube360 real-time analyser. The displayed data gaps throughout March 2026 within the PM₁₀ data were due to an error with OS card, resulting in the device being unable to record the data. Following the repair of the dust monitor it was returned to the field on the 21st of March. There have been no gaps recorded in the data since.

The data collected as seen in Figure 18, demonstrates no exceedances in this reporting period with all data captured well below the 50µg/m³ 24-hour criteria.

Version No:	Version Date:	Document title	Seqwater Document Number	Page:
1	16/06/2026	Quarterly Compliance and Monitoring Summary Report for the Coordinator-General	LMDIP-10000-GNL-ENV-REP-00004	68 of 84

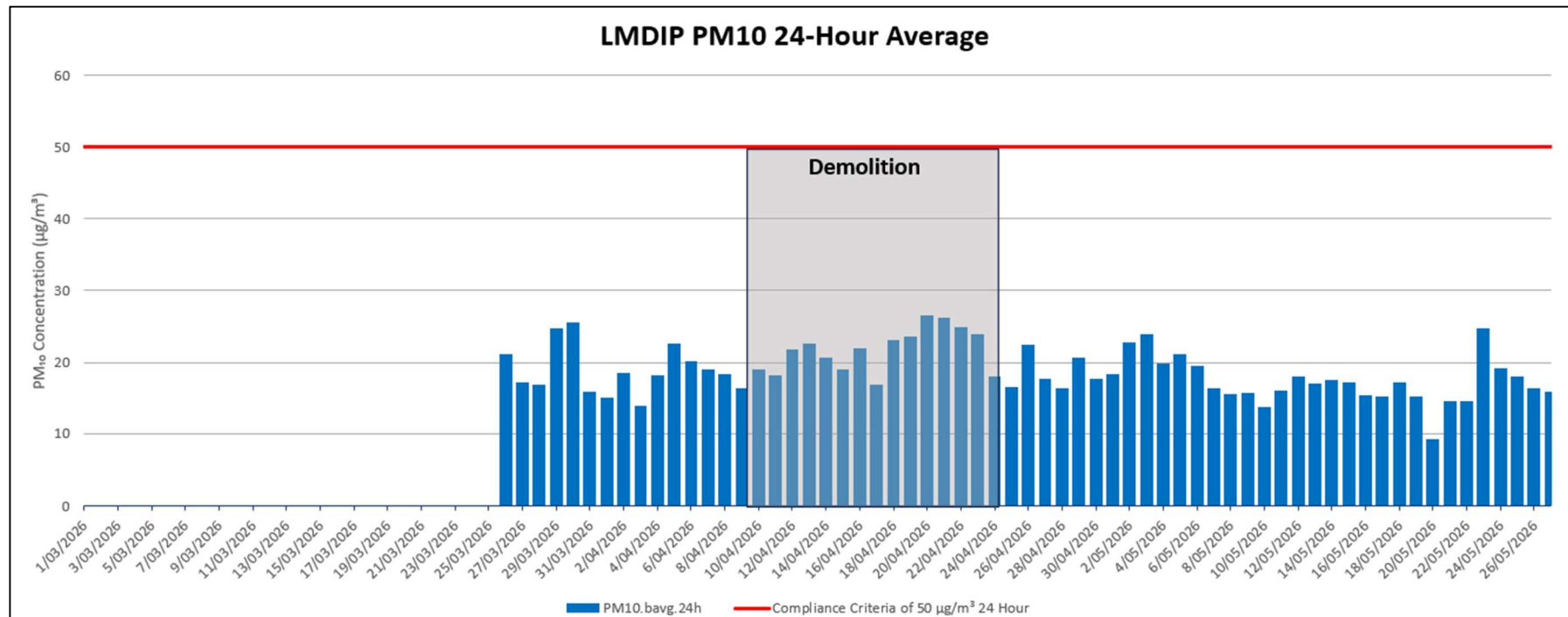


Figure 19: LMDIP PM10 24-Hour Average

7.2. Site Hive Dust Monitor

The Site Hive included a dust monitoring unit measuring PM₁₀, located at the site entrance. Figure 19 shows that there was no exceedance of the PM₁₀ 50µg/m³ 24-hour criteria during the demolition period indicating that the dust mitigation measures in place were effective.

Version No:	Version Date:	Document title	Seqwater Document Number	Page:
1	16/06/2026	Quarterly Compliance and Monitoring Summary Report for the Coordinator-General	LMDIP-10000-GNL-ENV-REP-00004	69 of 84

Lake Macdonald Dam Improvement Project
Quarterly Compliance and Monitoring Summary Report for the Coordinator-General

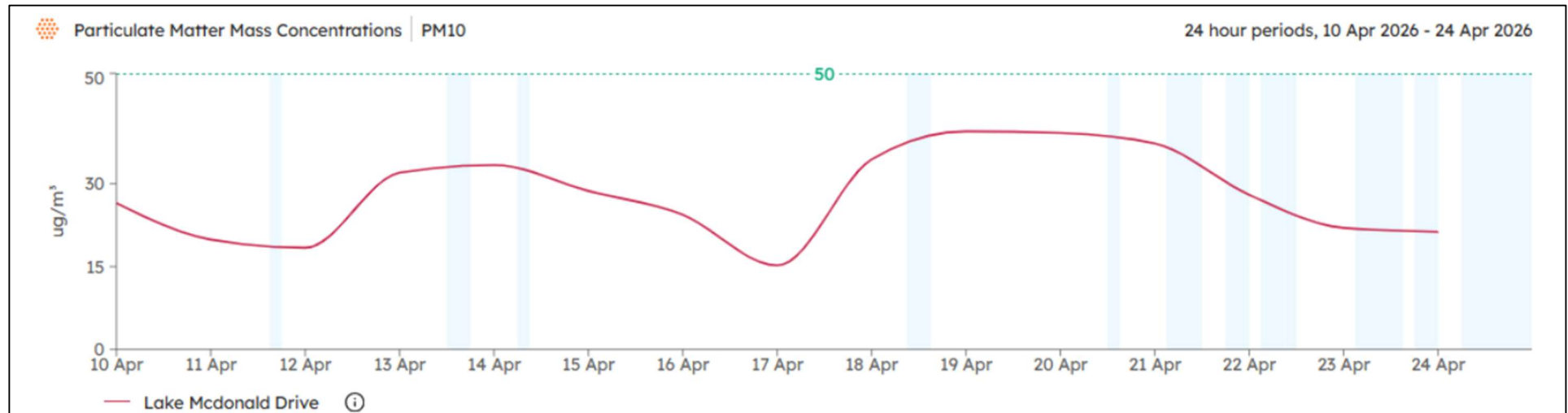


Figure 20: LMDIP Site Hive PM₁₀ Levels (24-Hour Average)

Version No:	Version Date:	Document title	Seqwater Document Number	Page:
1	16/06/2026	Quarterly Compliance and Monitoring Summary Report for the Coordinator-General	LMDIP-10000-GNL-ENV-REP-00004	70 of 84

7.3. Dust Deposition Gauge

Table 21 presents the dust deposition gauge (DDG) results for the monitoring period. Three exceedances of the target criteria of 120mg/m²/day were recorded across April and May at DDG2 and DDG4.

Two of these exceedances were recorded between the 9th of April and 7th of May at DDG2 and DDG4, with monthly averages of 133.3mg/m²/day and 136.7mg/m²/day respectively. These exceedances were marginal and did not correspond with the compliant PM₁₀ data recorded by both the Dust Cube Monitor and Site Hive Monitor. It was noted that extensive tree trimming associated with nearby powerline works, occurred in the vicinity of DDG2 which may have contributed to increased levels of insoluble solids in the gauge. Additionally, there was widespread smoke in the area due to multiple planned burns in the Sunshine Coast region.

One exceedance was recorded in the month of May (07/05/2026 – 27/05/2026), at DDG4, with a monthly average of 266.7mg/m²/day. This exceedance is unlikely to be associated with site-generated dust as DDG4 is located 300m east of the site, separated by dense vegetation. Additionally, the predominant wind direction recorded during the monitoring period was north-westerly. Observations in the vicinity of DDG4 identified potential local sources including landscaping activities, fire pit use and natural deposition sources from surrounding vegetation.

Importantly, no dust complaints were received during this reporting period.

Table 21: Dust Deposition Gauge Results

Month / Year	Gauge ID	Insoluble solids (mg/m ² /day)
March 2026 (10/03/2026 – 09/04/2026)	DDG1	16.7
	DDG2	33.3
	DDG3	13.3
	DDG4	30.0
April 2026 (09/04/2026 – 07/05/2026)	DDG1	20.0
	DDG2	133.3
	DDG3	10.0
	DDG4	136.7
May 2026 (07/05/2026 – 27/05/2026)	DDG1	6.7
	DDG2	60.0
	DDG3	3.3
	DDG4	266.7

Version No:	Version Date:	Document title	Seqwater Document Number	Page:
1	16/06/2026	Quarterly Compliance and Monitoring Summary Report for the Coordinator-General	LMDIP-10000-GNL-ENV-REP-00004	71 of 84

8. Waste Resource Use

The majority of construction waste generated on-site is managed by a waste subcontractor who comingle and sort waste at an offsite facility. Steel offcuts and any waste from the sheet piles are also separated and recycled offsite by a subcontractor waste supplier. A summary of waste quantities and materials and outcomes are listed below in Table 22.


In summary, 16.14 tonnes of waste was generated by the project during this monitoring period.

- For the monitoring period an average of 91.02% of waste was diverted from landfill.
- 93.67 tonnes of steel waste recycled during the monitoring period.

Version No:	Version Date:	Document title	Seqwater Document Number	Page:
1	16/06/2026	Quarterly Compliance and Monitoring Summary Report for the Coordinator-General	7225-JHG-REP-SQ-001[2]	72 of 84

Lake Macdonald Dam Improvement Project
Quarterly Compliance and Monitoring Summary Report for the Coordinator-General

Table 22: Construction and Demolition Waste Summary Report

 AKM EARTH T/A RAW SKIPS ABN 49 166 597 637 29 Main Beach Road, Pinkenba		CONSTRUCTION & DEMOLITION WASTE REPORT John Holland Qld – Lake Macdonald Dam Improvement Project 110 COLLWOOD ROAD, LAKE MACDONALD NOOSA WASTE WATER TREATMENT PLANT											
Reporting period from 21st to 20th of each month	Jan-26	Feb-26	Mar-26	Apr-26	May-26	Jun-26	Jul-26	Aug-26	Sep-26	Oct-26	Nov-26	Dec-26	Annual Totals to Date
Waste Diverted from Landfill Breakdown (tonnes) - Based on Material Received from Project													
Masonry - including asphalt, bricks, concrete, tiles and ceramics	0.00	3.26	0.37	0.00	0.00								3.63
Plasterboard	0.00	0.00	0.00	0.00	0.00								0.00
Metals - ferrous and non-ferrous	0.86	0.00	0.25	0.12	0.00								1.23
Organics - including soils, fines and green waste	0.00	1.44	0.29	1.01	1.43								4.17
Timber - including offcuts, pallets, formwork	0.86	0.82	4.92	1.62	2.02								10.23
Cardboard and Paper	1.43	0.21	0.52	0.24	1.04								3.44
Plastics (Recyclable)	0.11	0.30	0.11	0.13	0.61								1.26
Glass	0.00	0.00	0.00	0.00	0.00								0.00
Waste To Landfill (tonnes) - Based on Material Received from Project													
General Waste (Landfill) - May include soft plastics, polystyrene, packaging, textiles and general wastes.	0.35	0.61	0.71	0.33	0.42								2.42
Summary of Reportable Waste From Project													
Total Waste Received from Project (tonnes)	3.60	6.64	7.17	3.46	5.51	0.00	0.00	0.00	0.00	0.00	0.00	0.00	26.37
Total Waste Diverted from Landfill (tonnes)	3.25	6.03	6.46	3.13	5.09	0.00	0.00	0.00	0.00	0.00	0.00	0.00	23.96
Total Waste to Landfill (tonnes)	0.35	0.61	0.71	0.33	0.42								2.42
Total Waste Received from Project (cubic metre)	15.5	30.6	24.0	12.0	24.0	0.0	0.0	0.0	0.0	0.0	0.0	0.0	106.10
Density (tonnes/cubic metre)	0.232	0.217	0.299	0.288	0.230								0.25
Total Waste Diverted from Landfill (Percentage)	90.23%	90.81%	90.07%	90.55%	92.46%								90.84%
Report Issued: 25/05/2026	Notes: 1. Special wastes are excluded from this report. This includes but is not limited to: asbestos waste, asbestos containing material or other hazardous wastes, restricted solid wastes, regulated wastes, contaminated soil, medical or liquid wastes. 2. Waste collected from Projects is taken to an AKM Earth owned and operated facility located at either Caboolture, Kunda Park or Pinkenba. Each of these facilities is accredited to Greenstar Reporting Standards as a Waste Processing Facility. Material which cannot be recycled is disposed of at an appropriately licensed landfill facility.												
First Bin Collected: 20/12/2024													
Final Bin Collected: Ongoing													

This document is the property of Seqwater. It must not be copied or reproduced in any way whatsoever without the authority of Seqwater. This document is uncontrolled when printed. An electronic database manages and stores the controlled version.

Version No:	Version Date:	Document title	Seqwater Document Number	Page:
1	16/06/2026	Quarterly Compliance and Monitoring Summary Report for the Coordinator-General	LMDIP-10000-GNL-ENV-REP-00004	73 of 84

Appendix B - Attended Noise Monitoring Results

Appendix B-1: Attended Monitoring Results Outside of Demolition

Date	Location	Noise Events	Main Noise Sources	% of time active	LAeq (15 minutes)	Comments	No. of Vehicles (Residential Traffic)
1/04/2026 15:24pm	419 Lake Macdonald Drive	Residential Traffic (15m), Site LV Traffic (15-30m), Water Cart (20m) Lawn Mower (100m)	Site LV traffic	5	53	Minimal site activities were occurring at the time of attended monitoring. A water cart passed on road once and occasional LVs leaving and entering site. A residential lawnmower was slightly audible.	
			Water cart (on site)	5			
			Residential Traffic	70			
			Lawn mower	100			
28/04/2026 16:17pm	419 Lake Macdonald Drive	Geotechnical investigation - drilling (100m), Concreting (100m), Lake Macdonald Drive Residential Traffic (20m)	Drilling	30%	55	Drilling was barely audible and occurred at short intervals. Dropping and moving of rock on the working platform as well as concreting was occasionally audible during the attended noise monitoring. Residential traffic was the main audible noise source.	Non-project vehicles: LV x 34
			Wet concrete drop	3%			
			Residential Traffic	70%			
			Rock Drop	5%			
1/05/2026 12:26pm	48 Highland Drive	Piling with vibration hammer (400m), Sprinkler (20m), Excavator moving rock (350m), Geotechnical	Excavator bucket moving rock	30%	54	Piling occurred for almost half of the attended monitoring period, ranging from 53-69dBA generally around 60dBA. Excavator could be heard placing rock on the working platform and drilling and concreting occurred throughout the	
			Reverse squeaker	5%			
			Piling	40%			
			Concreting on working platform	NA			

This document is the property of Seqwater. It must not be copied or reproduced in any way whatsoever without the authority of Seqwater. This document is uncontrolled when printed. An electronic database manages and stores the controlled version.

Version No:	Version Date:	Document title	Seqwater Document Number	Page:
1	16/06/2026	Quarterly Compliance and Monitoring Summary Report for the Coordinator-General	LMDIP-10000-GNL-ENV-REP-00004	74 of 84

Lake Macdonald Dam Improvement Project
Quarterly Compliance and Monitoring Summary Report for the Coordinator-General

		investigation - drilling (350m)	Bird calls	NA		monitoring period but was not audible from Highland Drive	
14/05/2026 14:05pm	419 Lake Macdonald Drive	Residential Traffic (20m), Piling - Vibration Hammer (100m), Geotechnical investigation - drilling (70m)	Piling using vibe hammer on working platform	10%	56	Piling only occurred for short intervals and made up 10% of the attended monitoring period. It ranged from 57-64dB. When traffic was passing, the piling could not be heard overtop the vehicles which were louder	Non-project vehicles: LV x 27
			Drilling/Machinery	1%			Project Vehicles: 1 x truck, 1 x LV
			Squeaker	5%			
			Residential Traffic	70			

This document is the property of Seqwater. It must not be copied or reproduced in any way whatsoever without the authority of Seqwater. This document is uncontrolled when printed. An electronic database manages and stores the controlled version.

Version No: 1	Version Date: 16/06/2026	Document title Quarterly Compliance and Monitoring Summary Report for the Coordinator-General	Seqwater Document Number LMDIP-10000-GNL-ENV-REP-00004	Page: 75 of 84
-------------------------	------------------------------------	---	--	--------------------------

Appendix B-2: Attended Monitoring Results During Demolition

Date	Location	Noise Events	Main Noise Sources	% of time active	LAeq (15 minutes)	Comments	No. of Vehicles (Residential Traffic)
10/04/2026 13:24pm	419 Lake Macdonald drive	Spillway Demolition (70m) 2x Excavators excavating the LHE embankment (20m) 4x Excavators demolishing the spillway (70m) 2x moxy trucks moving soil (100m) Residential Traffic (5m)	2 excavators on the left-hand embankment	90	67	Excavators on the left-hand embankment operated throughout the attended monitoring period. Activities included topsoil stripping and embankment excavation. A watercart was used both on Lake MacDonald Drive and onsite. Traffic from Lake MacDonald Drive was approximately 5db louder than the noise generated by the excavator. Concrete cutting was not audible.	Project vehicles: 1 x watercart, 1 x truck, 28 x LV
			Water truck exiting the site	10			
			4 excavators on spillway	90			
			Reverse beepers	5			
			Residential Traffic	70			
10/04/2026 15:28pm	Cul-de-sac of Highland Drive	Spillway demolition (300m) Excavators excavating fill/spoil (300m) Excavators loading moxy trucks up with concrete and spoil (300m) Lake MacDonald residential traffic (150m)	Excavators excavating spoil fill	100	50	Excavators were audible for a majority of the attended monitoring including reversing alarms. Moxies were occasionally audible, but the noise was not as loud as expected for the demolition phase. Concrete cutting could not be heard.	
			Excavators breaking concrete	20			
			Excavators loading moxys with concrete and spoil	40			
			Moxy trucks transporting spoil	70			
			Reverse beepers	15			
			Residential Traffic	20			
			Lawn Mower	10			
			Squeaker	30			

Version No:	Version Date:	Document title	Seqwater Document Number	Page:
1	16/06/2026	Quarterly Compliance and Monitoring Summary Report for the Coordinator-General	LMDIP-10000-GNL-ENV-REP-00004	76 of 84

Lake Macdonald Dam Improvement Project
Quarterly Compliance and Monitoring Summary Report for the Coordinator-General

Date	Location	Noise Events	Main Noise Sources	% of time active	LAeq (15 minutes)	Comments	No. of Vehicles (Residential Traffic)
10/04/2026 19:45pm	Cul-de-sac of Highland Drive	Demolition of dam spillway (300m) Reverse Beepers (300m) Excavation of spillway and loading moxys (300m) Moxy trucks movements	Moxie Moving	40		Demolition noise was audible at night from Highland Drive, but it was not overly disruptive. Horn beeps and squeakers were the most noticeable.	
			Horn beeping	10			
			Excavator	60			
			Excavator dropping concrete	30			
			Dog barking	10			
			People Talking	5			
10/04/2026 16:19pm	371 Lake Macdonald Drive	Demolition + Excavation of spillway (300m), Lake Macdonald Residential Traffic (300m), Concrete put in Moxy trucks (300m), Excavators (300m),	Excavators excavating spillway	100	67	Construction noise from the demolition of the spillway was noticeable, but passing residential traffic was far louder and continually spiked the sound metre and was more disruptive than the noise generated by construction work	Non-project vehicles: 39 x LV
			Concrete put in Moxy trucks	40			
			Moxie and excavator	90			
			Reverse Alarms	40			
			Residential Traffic	70			
10/04/2026 20:18pm	Lake Macdonald Park Boat Ramp	Spillway demolition (100m) Concrete breaking and dirt excavation (500m) Moxys travelling around site (500m) Residential Traffic (50m)	Breaking of concrete	30	49	Demolition of the spillway could be heard including moxy trucks, excavators and their squeakers and occasional horn beeps. Moxies could be heard transporting embankment fill from spillway.	
			Fill Excavation	90			
			Loading moxys with concrete and dirt	60			
			Moxy movements	100			
			Reverse Squeakers	20			

Version No:	Version Date:	Document title	Seqwater Document Number	Page:
1	16/06/2026	Quarterly Compliance and Monitoring Summary Report for the Coordinator-General	LMDIP-10000-GNL-ENV-REP-00004	77 of 84

Lake Macdonald Dam Improvement Project
Quarterly Compliance and Monitoring Summary Report for the Coordinator-General

Date	Location	Noise Events	Main Noise Sources	% of time active	LAeq (15 minutes)	Comments	No. of Vehicles (Residential Traffic)
			Horn beeping	10			
			Residential Traffic	30			
			Frog/toad/cicada calls	NA			
11/04/2026 19:25pm	Collwood Rd near site gate	Dozer in Hardstand 3 pushing material (100m)	Dozer pushing material in Hardstand 3	50%	41	Dominant noise was D6 bulldozer pushing material on hardstand 3, accelerating up stockpile and reversing squeaker and tracks.	
			Dozer reversing	35%			
			Hammering	5%			
			Crickets	10%			
11/04/2026 19:50pm	Highland Drive at cul-de-sac end closest to site	Night demolition works, 5 excavators and moxy trucks running, 1 bulldozer, Hammering spillway concrete	Excavators	40%	42	Concrete hammering on spillway occurring with noise shroud.	
			People talking	10%			
			Dog barking	5%			
			Excavator tracking	5%			
			Machine horns	20%			
			Hammering	10%			
			Rock being loaded into moxy	10%			
12/04/2026 19:27pm	48 Highland Drive	5 excavators and moxy trucks running, 1 bulldozer working in hardstand 3	Heavy Machinery Noise	20%	49	Most audible noise was D6 dozer, night was cooler in temperature and clear sound was travelling further, Dozer was higher on stockpile as material is being filled.	
			Residents talking over the road	10%			
			Residential Traffic	5%			
			Car reversing opposite driveway	2%			

Version No: 1	Version Date: 16/06/2026	Document title Quarterly Compliance and Monitoring Summary Report for the Coordinator-General	Seqwater Document Number LMDIP-10000-GNL-ENV-REP-00004	Page: 78 of 84
-------------------------	------------------------------------	---	--	--------------------------

Lake Macdonald Dam Improvement Project
Quarterly Compliance and Monitoring Summary Report for the Coordinator-General

Date	Location	Noise Events	Main Noise Sources	% of time active	LAeq (15 minutes)	Comments	No. of Vehicles (Residential Traffic)
			Dog barking	5%			
			Reverse squeaker and horns	10%			
			Dozer exhaust noise	35%			
			Rock tipping	5%			
12/04/2026 19:53pm	Botanical Garden boat ramp	6 excavators and 5 moxy trucks hauling spoil and rock, D6 dozer working in hardstand 3	Dozer	20%	50	Main noise source was machine noise, excavators loading moxy trucks, moxy trucks on haul road and dozer and material being tipped in borrow pit	
			Heavy Machine noise	40%			
			Rock tipping in borrow pit	5%			
			Digger bucket rattling	5%			
			Moxy trucks on haul rd	15%			
13/04/2026 14:08pm	18 Clearview Drive	Spillway demolition (1km), Residential background noise (100m)	No audible construction noises	NA	36	No construction noise heard. Background noise was also very quiet.	Non-project vehicles: 1 x LV
			People talking in nearby residence	15			
			Residential chainsaw use	10			
			Insects buzzing	60%			
			Car in driveway	10			
			Reverse squeaker	30%	63		

Version No:	Version Date:	Document title	Seqwater Document Number	Page:
1	16/06/2026	Quarterly Compliance and Monitoring Summary Report for the Coordinator-General	LMDIP-10000-GNL-ENV-REP-00004	79 of 84

Lake Macdonald Dam Improvement Project
Quarterly Compliance and Monitoring Summary Report for the Coordinator-General

Date	Location	Noise Events	Main Noise Sources	% of time active	LAeq (15 minutes)	Comments	No. of Vehicles (Residential Traffic)
13/04/2026 19:27pm	Corner of Liane Drive and Lake Macdonald Drive	Rock fill being pushed (200m), Spillway demolition (200m), Excavators (200m), Lake Mac Residential Traffic	Rock fill being pushed	40%		Construction noise was consistent, with nothing spiking the LAeq. Excavators and moxy trucks were moving constantly.	Non-project vehicles: LV x 4
			Watercart driving past	2%			
			Concrete loaded in moxy	40%			
			Horn Beeping	30%			
			Rock being dropped	30%			
			Lake Mac Residential Traffic	20%			
13/04/2026 19:49pm	Borrow pit	Hualing material into the Borrow Pit (50m) Excavator on stockpile (100m) Hauling material into Hardstand 3 (100m) Dozer in Hardstand 3 pushing material (100m)	Moxie entering borrow pit	2%	63	Construction activities were occurring at the back of site with no close sensitive receivers (>300m). Dozer was considerably loud throughout the monitoring period. Concrete and rock drops were significantly loud but were not happening constantly.	
			Moxie unloading rubble into the Borrow Pit	5%			
			Dozer on stockpile	90%			
			Excavator in the Borrow Pit	60%			
			Reverse Squeakers	30%			
14/04/2026 18:30pm	18 Clearview drive	Hardstand 3 and Borrow Pit Stockpile (1km) Spillway demolition (1.5km) Residential noise (50-500m)	Dozer	90%	36	Noise was very quiet. Dozer was faintly heard throughout in the background due to very low background noise. No other construction noise was heard	
			Household noise	40%			
			Cicadas	60%			
			Traffic on Collwood road	20%			

Version No: 1	Version Date: 16/06/2026	Document title Quarterly Compliance and Monitoring Summary Report for the Coordinator-General	Seqwater Document Number LMDIP-10000-GNL-ENV-REP-00004	Page: 80 of 84
-------------------------	------------------------------------	---	--	--------------------------

Lake Macdonald Dam Improvement Project
Quarterly Compliance and Monitoring Summary Report for the Coordinator-General

Date	Location	Noise Events	Main Noise Sources	% of time active	LAeq (15 minutes)	Comments	No. of Vehicles (Residential Traffic)
14/04/2026 19:05pm	9 Highland Drive	Spillway Demolition (400m) Borrow Pit and Hardstand 3 (1km) Lake Mac Residential Traffic (10m)	Excavator	90%	53	Dominant construction noises included excavation, concrete/rubble drop and D6 dozer. However, it did not significantly contribute to noise levels. Residential traffic was a significant noise source during the attended monitoring period.	Non-project vehicles: LV X 25
			Concrete/Rubble Drop	40%			
			Dozer	70%			
			Rock Push	20%			
			Horn Beep	10%			
			Squeaker	20%			
			Residential Traffic	50%			
14/04/2026 16:13pm	9 Highland Drive	Spillway Demolition (400m) Dozer and moxys moving spoil at back of site (1km) Residential Traffic (10m)	Dozer	40%	55	Noise from demolition activities, including moxys and excavators were noted, but it was not a dominant noise source, particularly during periods of passing residential traffic at the monitoring location. Noise from the dozer was observed to carry over other noise sources despite its distance from the monitoring location.	Non-project vehicles: LV X 30
			Horn beep	20%			
			Concrete/rubble dropping	15%			
			Moxie running	50%			
			Excavator filling moxie with embankment fill	60%			
			Residential Traffic	60%			
			Dog Bark	10%			
17/04/2026 14:15pm	Hamilton Drive	Spillway Demolition (400m) Residential Traffic (50m) Nearby Residence (20m)	Rock and rubble dropping	10%	51	Construction noise was minimal, with only occasional rock and concrete drops audible. Work paused during attended monitoring due to a scheduled break. Background noise included bird calls, nearby conversations, and	Non-project vehicles: LV x 37
			Residential Traffic	50%			
			Nearby conversation	30%			

Version No:	Version Date:	Document title	Seqwater Document Number	Page:
1	16/06/2026	Quarterly Compliance and Monitoring Summary Report for the Coordinator-General	LMDIP-10000-GNL-ENV-REP-00004	81 of 84

Lake Macdonald Dam Improvement Project
 Quarterly Compliance and Monitoring Summary Report for the Coordinator-General

Date	Location	Noise Events	Main Noise Sources	% of time active	LAeq (15 minutes)	Comments	No. of Vehicles (Residential Traffic)
			Bird Calls	80%		passing traffic, which was the dominant noise source throughout the monitoring period.	
20/04/2026 11:16am	Hamilton Road	Dam Spillway (400m), Lawn Mowing (100m), Lake Mac Drive Traffic (10m)	Dozer	95%	52	Construction noise was not overly noticeable, with the dozer being the main source of construction noise being a constant hum in the background. There was lots of residential noise contribution during the attended monitoring period including traffic, lawn mowing and the use of power tools	Non-project vehicles: LV x 27
			Rock/rubble dropping	2%			
			Saw Grinder (residential use)	10%			
			Lawn mowing	90%			
			Residential Traffic	50%			
20/04/2026 11:00am	Hamilton Road	Dam Spillway Demolition (400m), Tree cutting (300m), Lake Macdonald traffic (50m)	Dozer	20%	51	Construction noise was hard to note above the other residential backyard noise, including traffic. The only construction noise noted was a dozer, and occasionally an excavator or rock/rubble dropping.	Non-project vehicles: LV x 25, 2 x trucks. 1 x bus
			Excavator	10%			
			Rock drop/push	5%			
			Tree trimming on Lake Mac Drive	NA			
			Residential Traffic	60%			
			Bird Calls	70%			
			Machine Saw	10%			
20/04/2026 16:02pm	Hamilton Road	Dam Spillway Demolition (400m), Lake Mac Drive Residential Traffic (10m) Excavator LHE (300m)	Excavator excavating LHE	90%	59	Excavators were operating near the site entrance, with moxy truck movement audible in the background. Residential traffic remained a dominant noise source during the attended monitoring.	Non-project vehicles: LV x 35
			Moxie moving	20%			
			Construction - Item drop	5%			
			Residential Traffic	50%			

Version No:	Version Date:	Document title	Seqwater Document Number	Page:
1	16/06/2026	Quarterly Compliance and Monitoring Summary Report for the Coordinator-General	LMDIP-10000-GNL-ENV-REP-00004	82 of 84

Lake Macdonald Dam Improvement Project
Quarterly Compliance and Monitoring Summary Report for the Coordinator-General

Date	Location	Noise Events	Main Noise Sources	% of time active	LAeq (15 minutes)	Comments	No. of Vehicles (Residential Traffic)
20/04/2026 16:21pm	419 Lake Macdonald Drive	Dam Spillway Excavation (100m), LHE excavation (30m), Lake Macdonald Drive Residential Traffic (20m)	Excavation of LHE	100%	60	Attended monitoring location was across the road from the site and construction source (30m). Activities included excavating soil and loading moxys, and they were a dominant noise source. Residential traffic was a secondary noise source during the attended monitoring.	Non-project vehicles: LV x 41
			Filling moxy trucks with soil/spoil	30%			
			Squeakers/Horn Beep	10%			
			Residential Traffic	60%			
21/04/2026 15:23pm	60 Highland Drive	Excavators on spillway (300m), Moxie/dozer exhaust (1000m), Truck movement on site (300m), rock drop/movement (300m)	Excavators on spillway	60%	47	Construction noise while audible was low, and mainly from excavators and rock drop near the spillway demolition intermittently. Bird calls were often louder than construction work	
			trucks moving on site	30%			
			Rock drop/movement	30%			
			truck tailgate slamming	5%			
			Bird calls	50%			
21/04/2026 15:48pm	9 Highland Drive	Moxie/Dozer (500m), Lake Macdonald Drive traffic (15m), Excavator (300m)	Rock tip	15%	52	Dam wall demolition works audible, including moxy trucks and dozer moving in hardstand 3, and rock tups and excavators on the spillway. However, it was not a significant source of noise, and the residential traffic was more frequent and louder.	Non-project vehicles: LV x 32
			Excavator shaking bucket	10%			
			Dozer exhaust	50%			
			Excavator	40%			
			Residential use of power tools	20%			
			Residential Traffic	10%			

Version No:	Version Date:	Document title	Seqwater Document Number	Page:
1	16/06/2026	Quarterly Compliance and Monitoring Summary Report for the Coordinator-General	LMDIP-10000-GNL-ENV-REP-00004	83 of 84

Lake Macdonald Dam Improvement Project
Quarterly Compliance and Monitoring Summary Report for the Coordinator-General

Date	Location	Noise Events	Main Noise Sources	% of time active	LAeq (15 minutes)	Comments	No. of Vehicles (Residential Traffic)
			Helicopter	20%			
28/04/2026 16:17pm	419 Lake Macdonald Drive	Geotechnical investigation - drilling (100m), Concreting (100m), Lake Macdonald Drive Residential Traffic (20m)	Drilling	30%	55	Drilling was barely audible and occurred at short intervals. Dropping and moving of rock on the working platform as well as concreting was occasionally audible during the attended noise monitoring. Residential traffic was the main audible noise source.	Non-project vehicles: LV x 34
			Wet concrete drop	3%			
			Lake MacDonald Drive Traffic	70%			
			Rock Drop	5%			
1/05/2026 12:26pm	48 Highland Drive	Piling with vibration hammer (400m), Sprinkler (20m), Excavator moving rock (350m), Geotechnical investigation - drilling (350m)	Excavator bucket moving rock	30%	54	Piling occurred for almost half of the attended monitoring period, ranging from 53-69dBA generally around 60dBA. Excavator could be heard placing rock on the working platform and drilling and concreting occurred throughout the monitoring period but was not audible from Highland Drive	
			Reverse squeaker	5%			
			Piling	40%			
			Drilling rig	NA			
			Concreting on working platform	NA			
			Bird calls	NA			
14/05/2026 14:05pm	419 Lake Macdonald Drive	Residential Traffic (20m), Piling - Vibration Hammer (100m), Geotechnical investigation - drilling (70m)	Piling using vibe hammer on working platform	10%	56	Piling only occurred for short intervals and made up 10% of the attended monitoring period. It ranged from 57-64dB. When traffic was passing, the piling could not be heard overtop the vehicles which were louder	Non-project vehicles: LV x 27
			Drilling/Machinery	1%			
			Squeaker	5%			Project Vehicles: 1 x truck, 1 x LV
			Lake MacDonald Residential Traffic	70%			

Version No:	Version Date:	Document title	Seqwater Document Number	Page:
1	16/06/2026	Quarterly Compliance and Monitoring Summary Report for the Coordinator-General	LMDIP-10000-GNL-ENV-REP-00004	84 of 84