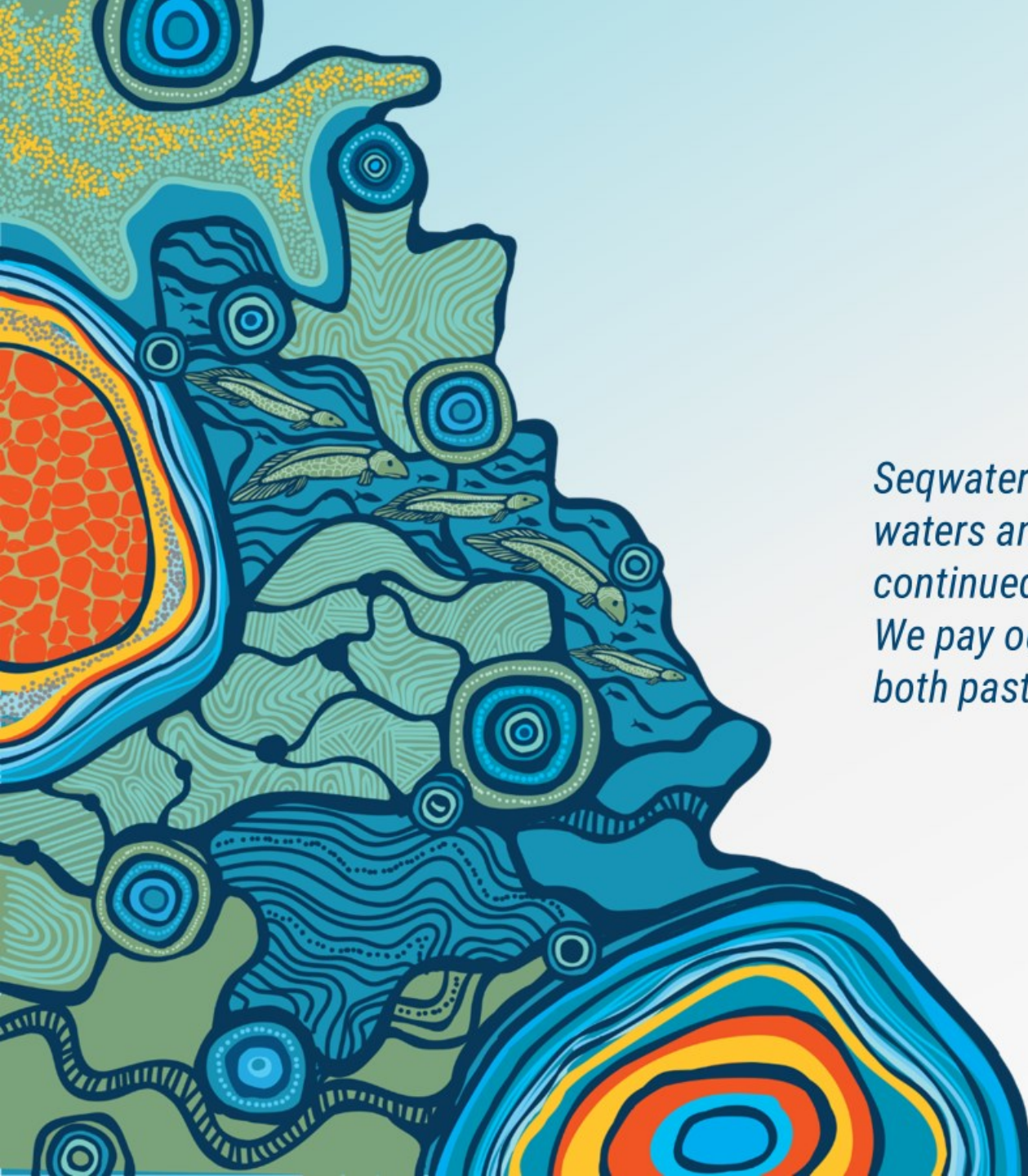


Lake Macdonald Dam Improvement Project

Community Reference Group
Meeting 5

19 November 2025





Seqwater acknowledges the Traditional Owners of these waters and surrounding lands and recognises their continued connection to the land, waters and community. We pay our respects to them and their cultures and to elders both past and present.

Admin and updates

Agenda

1. Welcome
2. Site tour
3. Project update (included on site tour)
4. Outstanding actions
5. Communications update
6. Demolition
7. Lake Macdonald Dr / Elm St Intersection upgrade
8. Wet weather readiness
9. Additional questions
10. Meeting conclusion

Administration

- Outstanding actions from last meeting

Item	Action	Assigned to
1.	Follow up on mulch availability and Mulch distribution point confirmation	Cameron/Daniela
2.	Confirm Wildlife Society meeting location	Kristy/Sharon
3.	Confirm status of removed TMR report to enable closure at next CRG.	Kristy
4.	Review water allocation licence holder queries	Kristy/Sharon
5.	Provide update on Elm Street/TMR design	Richard
6.	Demolition timing cannot be flexible, however is highly sensitive to weather conditions being suitable to proceed. Seqwater will identify, communicate and provide appropriate resident support.	Kristy/Richard

Communication updates

Stakeholder engagement

- Resident meetings
- November newsletter distributed
- LDMG meeting
- Noosa Council and Noosa EO meeting
- Coffee in the park at Lake Macdonald Park – 15 November
- Ongoing engagement with the Rowing Club
- Additional truck movements due to other construction projects in the area.

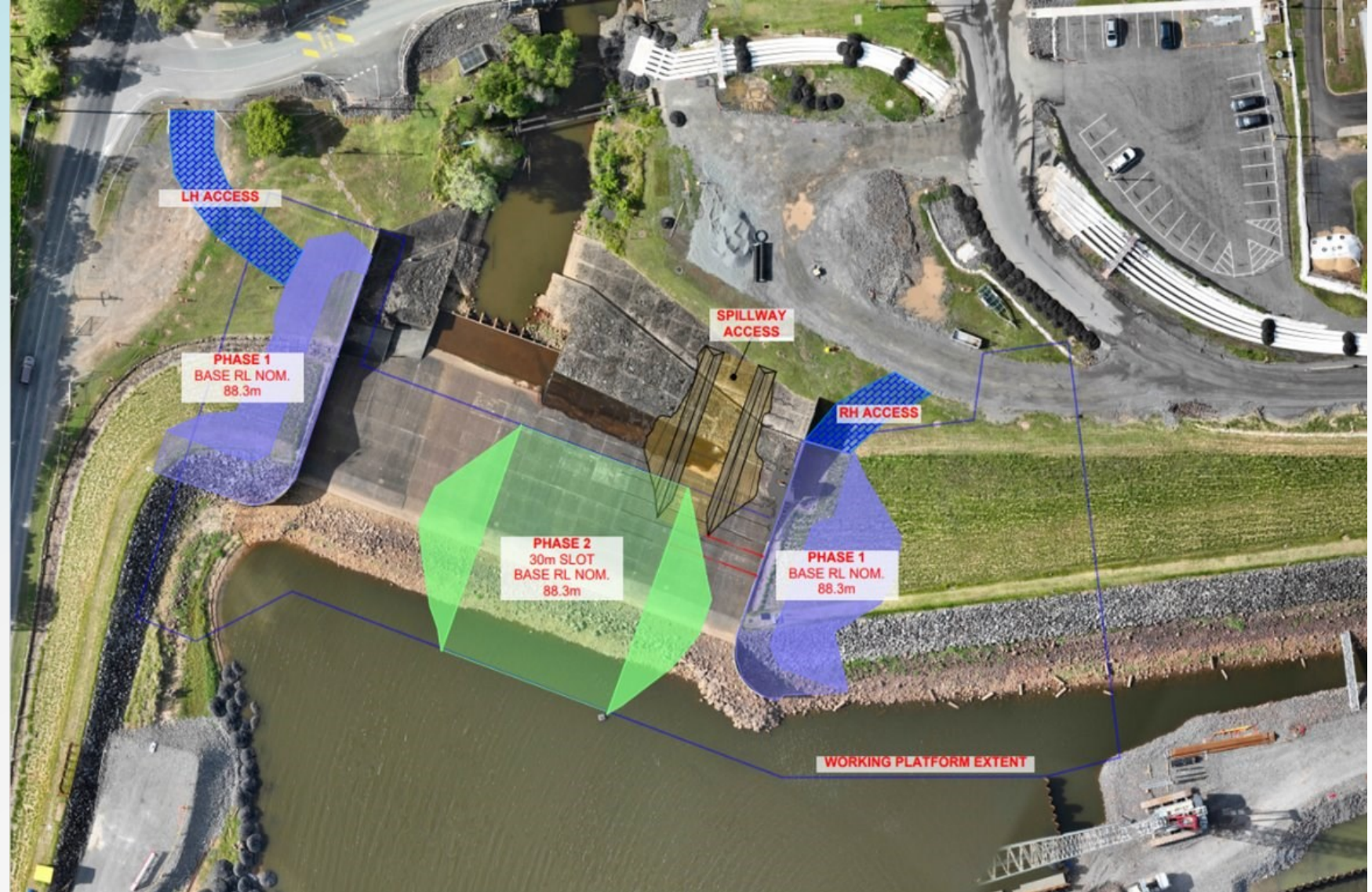


Demolition

Demolition

Demolition is broken into four phases:

- **Phase 1:** Material is excavated behind the existing training walls
- **Phase 2:** A 30m slot is excavated through the existing spillway structure
- Phase 1 & 2 occur simultaneously



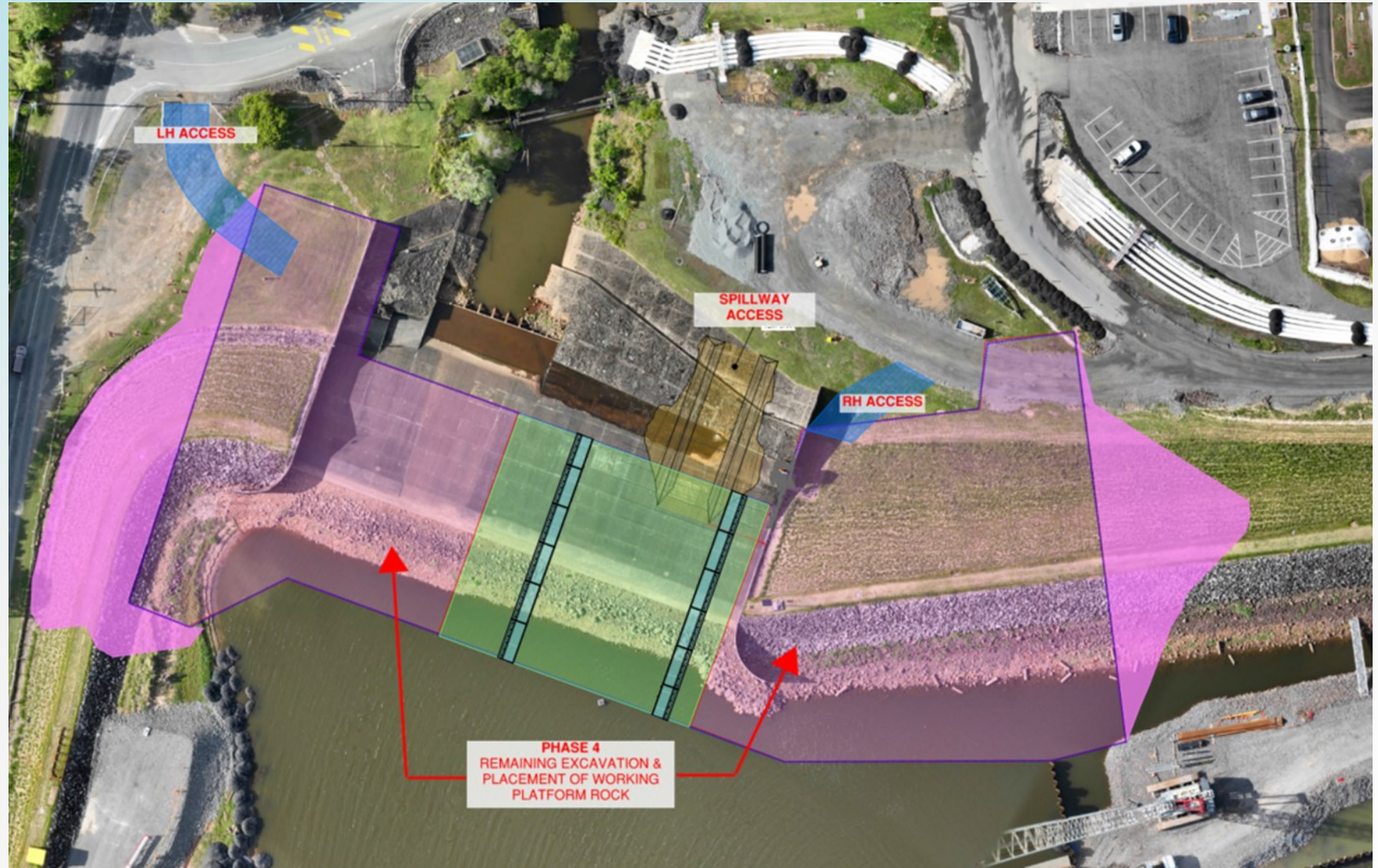
Demolition

- **Phase 3:** Existing spillway walls and concrete slabs are demolished
- Works progress in the 30m slot to construct a 'low-flow channel'



Demolition

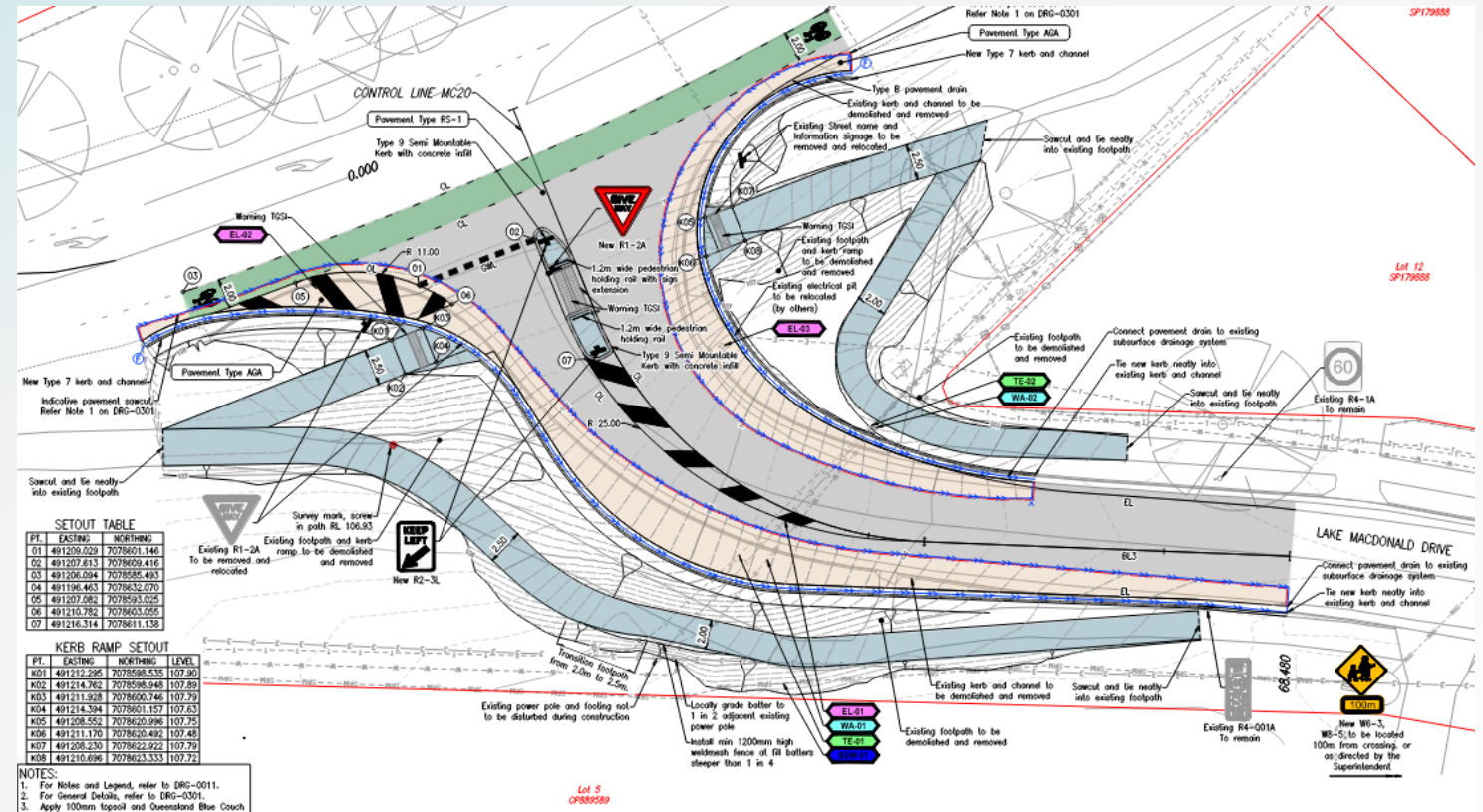
- **Phase 4:** Excavation continues out to the left and right hand embankments
- Granular material is placed on the excavated surface to construct the working platform



Lake Macdonald Drive and Elm Street intersection upgrade

Elm Street and Lake Macdonald Drive Intersection

- Construction drawings finalised
- Working through approvals
- Works will commence in early 2026 to avoid starting construction that cannot be completed before the two-week Christmas shutdown.



Wet season readiness

Wet season readiness

- Wet season in between November and March
- Regular meetings with Local Disaster Management Groups
- Emergency exercises, planning scenarios and staff training
- Maintenance undertaken during winter to optimise performance
- Stay prepared by:
 - Visit [Get Ready Queensland webpage](#)
 - Opt-in to [Council updates](#)
 - Sign up to [free dam release notifications](#) or follow Seqwater social media pages
 - Download the [Seqwater app](#)



Future meeting discussions

Future meetings

Other future meeting discussions

- Legacy projects
- Gympie Weir upgrade
- Future construction phase breakdowns

Questions

Conclusion

Next meeting

Thank you