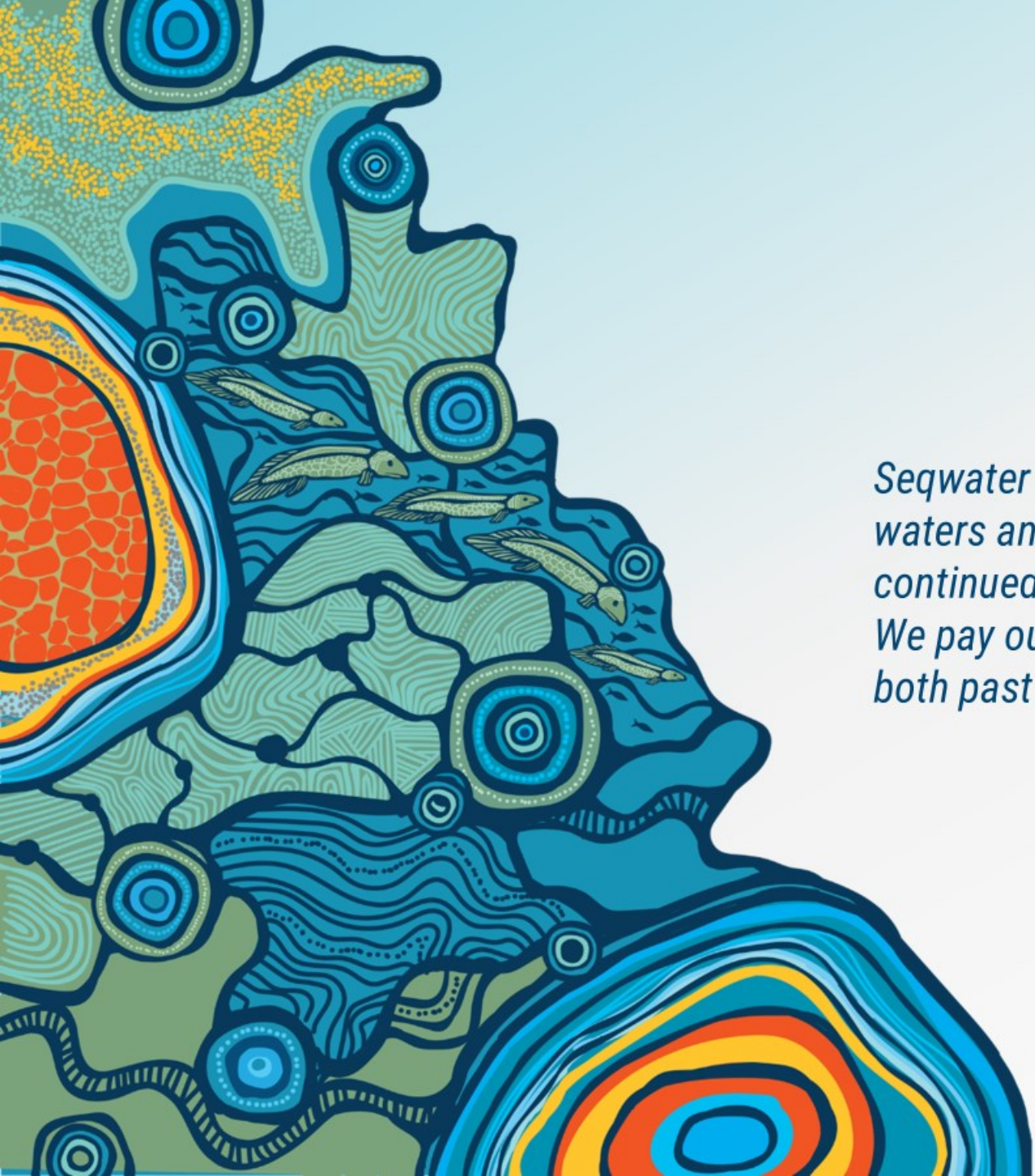


Lake Macdonald Dam Improvement Project

Community Reference Group
Meeting 3

Wednesday 21 May 2025





Seqwater acknowledges the Traditional Owners of these waters and surrounding lands and recognises their continued connection to the land, waters and community. We pay our respects to them and their cultures and to elders both past and present.

Admin and updates

Agenda

1. Welcome, Apologies, Actions
2. Communication and stakeholder engagement
3. Approvals
4. Project update and cofferdam construction
5. Construction impacts
6. Environment
7. Rowing Club Development Application
8. General business
9. Next meeting

Administration

- Outstanding actions from last meeting

Signed consent forms	Park overgrowth	Speed Limits Lake Macdonald Drive	TMR: Pomona Kin Kin Road
<ul style="list-style-type: none"> Most returned. Confirm outstanding. 	<ul style="list-style-type: none"> Raised with Noosa Shire Council 	<ul style="list-style-type: none"> Raised with Noosa Shire Council Liaising with QPS for police presence 	<ul style="list-style-type: none"> Raised with TMR https://www.tmr.qld.gov.au/projects/kin-kin-road-widening-upgrade-at-kin-kin-range

Design and construction to rehabilitate and widen priority sections of Kin Kin Road (locally known as Pomona Kin Kin Road) is underway. This will improve safety, reduce maintenance costs and improve ride quality on Kin Kin Road.

The Kin Kin Road widening project is being delivered in 3 stages:

Stage 1 – between Turnbull Road and Williams Road was completed in July 2023

Stage 2 – between Williams Road and Western Branch Road, design is underway

Stage 3 – between Sallwood Court and Turnbull Road. design is underway

These improvements will complement a section of Kin Kin Road upgraded in 2012.

Contact us



Email:
northcoast@tmr.qld.gov.au

Phone:
[07 5451 7055](tel:0754517055)

Post:
Department of Transport and Main Roads
PO Box 1600
MAROOCHYDORE QLD 4558

Communication updates

Works notices

Main construction notice:

- Sent Wednesday 16 April
- Delivered to approx. 6000 letterboxes
- Approx 700 emails on distribution list

Traffic impacts notice for early works:

- Sent Wednesday 16 April
- Distributed to approximately 700 letterboxes



Figure: Artist's impression of new dam

Upcoming engagement

- Resident meetings
- Media opportunity
- CRG meetings
- Environment study presentation offered to community groups and CSS P&C
- Coffee in the park at Lake Macdonald Park – date TBC



Approvals

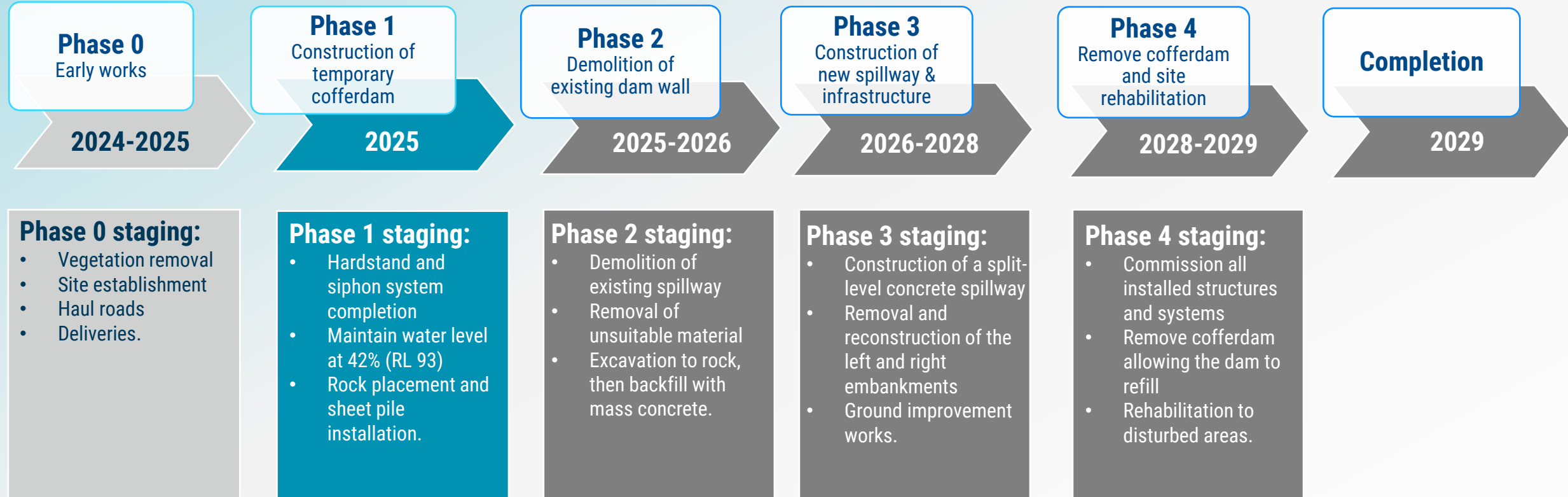
Approvals and agreements

- Coordinator-General's Change Report (Construction) – approved on 1 May 2025.
- State Assessment Referral Agency (SARA) waterway barrier works – approved on 8 May 2025.
- Site Environmental Management Plan (SEMP) inclusive of all sub plans – approved by OCG on 12 May 2025.
- Adaptive Management Plan (AMP) – approval received from the Department of Climate Change, Energy, the Environment and Water (DCCEEW) on 8 May 2025.
- Cultural Heritage Management Agreement (CHMA) – Friday 16 May 2025.
- Main construction has commenced.



Project update and temporary cofferdam

Program overview



Construction update

Pontoon for siphon installation



Mitchell Marine installing the site curtain



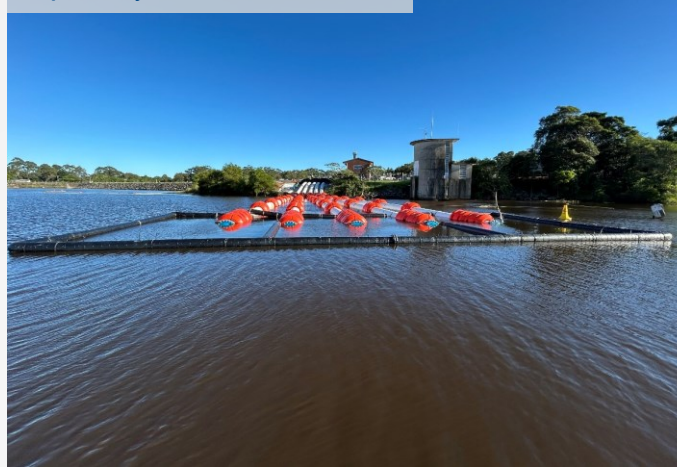
Hardstand 3 ready for crane installation



Siphon system installed



Siphon system installed



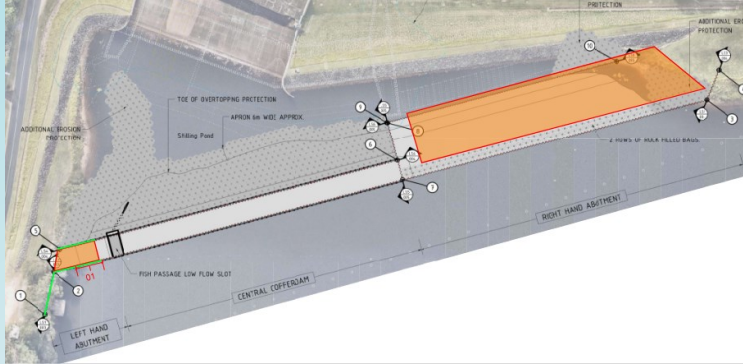
Siphon intake system



Cofferdam staging

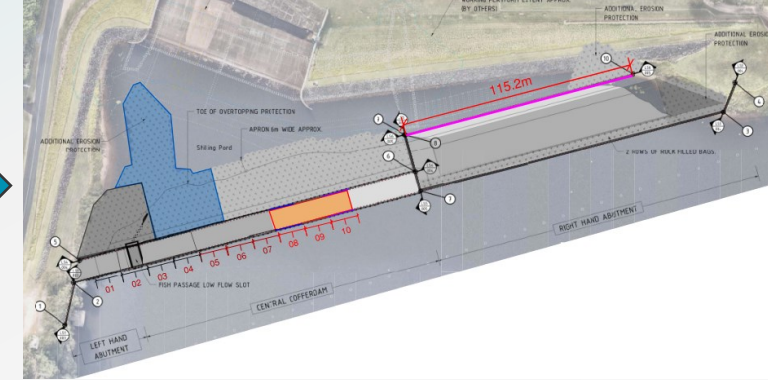
Month 1

Rock push, mobilise 250t crane, land and lake sheet piles on LHA



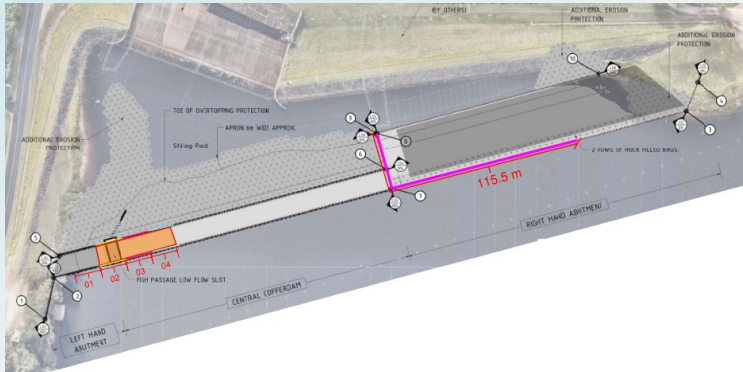
Month 4

Cont. central cofferdam, RHA and rock bags



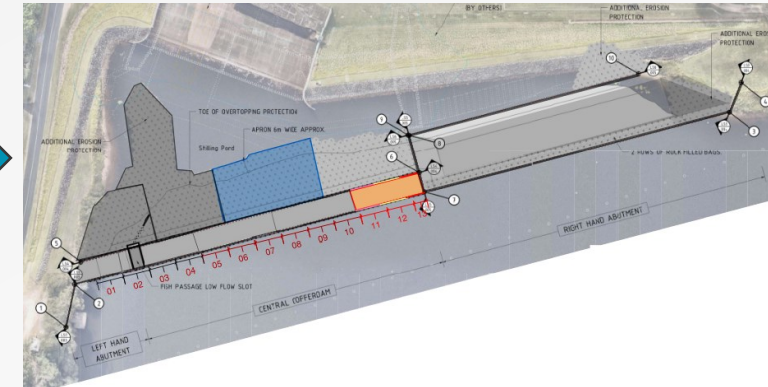
Month 2

Sheet piling central cofferdam and RHA



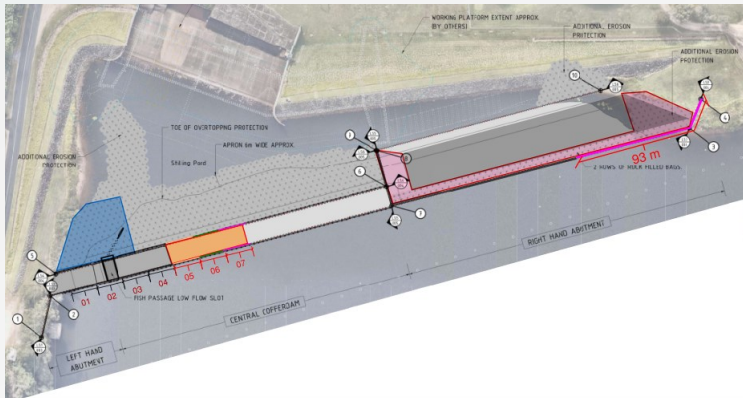
Month 5

Cont. central cofferdam, RHA and rock bags



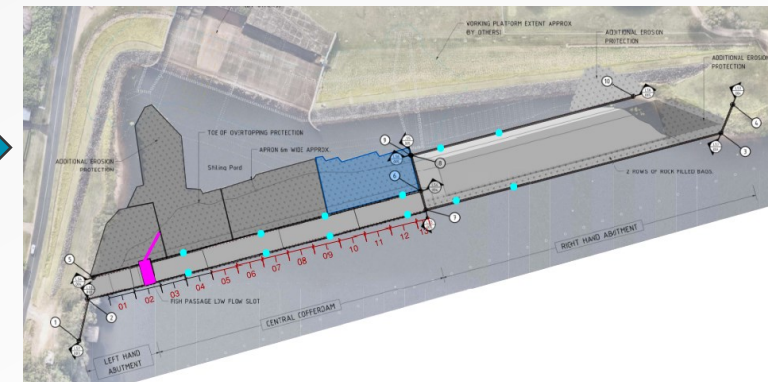
Month 3

Cont. central cofferdam, RHA and begin rock bag installation



Month 6

Finalise rock bags, instrumentation drilling, low flow and fish passage



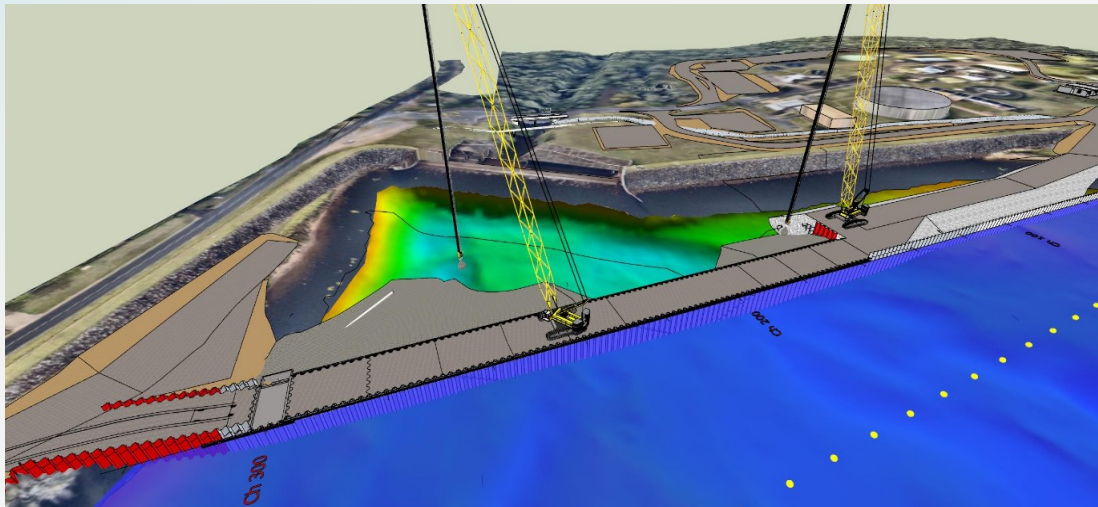
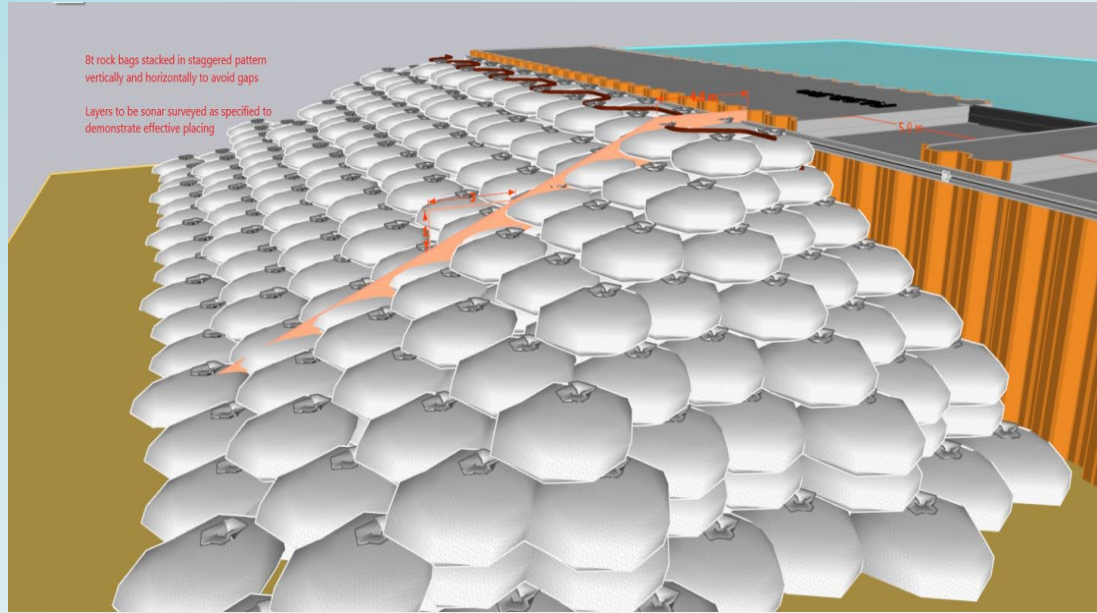
Rock fill placement



Sheet piling installation



Rock bags



Cofferdam stats & facts

Why do we need the cofferdam	The cofferdam is designed to hold back 3387 ML of water to create a dry working platform for construction of the new spillway. Catchment area is 49 square KMs.
Rockfill	80,000 tonnes of rockfill going into the cofferdam.
Steel	There will be 1,530 tonnes of steel in the form of sheet piles, walers and tie rods.
Rock bags	A total of 3,000 rock bags will be used to construct the downstream berm. Rock bags will be filled with approximately 5m ³ of rock and weigh 8 tonne each. Rock bags will be placed in a gradient to help with dissipation in spill events and support the cofferdam structure.
Sheet piles	The sheet piles range from 6m to 17m long and will be driven to various depths depending on the geological profile of the lakebed.
Local suppliers	Using local quarries and rock bag supplier to provide the required materials for the cofferdam.
Innovation	Constructing the downstream berm out of rock bags will be a first. The application of rock bags is an innovative solution compared to the standard RIP RAP scour protection that is usually specified.
May: Machinery mobilisation to site, siphons commissioned and commencement of sheet piling	

Construction impacts

Key topics

- Heavy vehicle movements and haulage routes
- Noise, dust and vibration
- Recreation

Haulage routes

Corbets, Traveston

Anticipated use throughout project:

- Rockfill supply

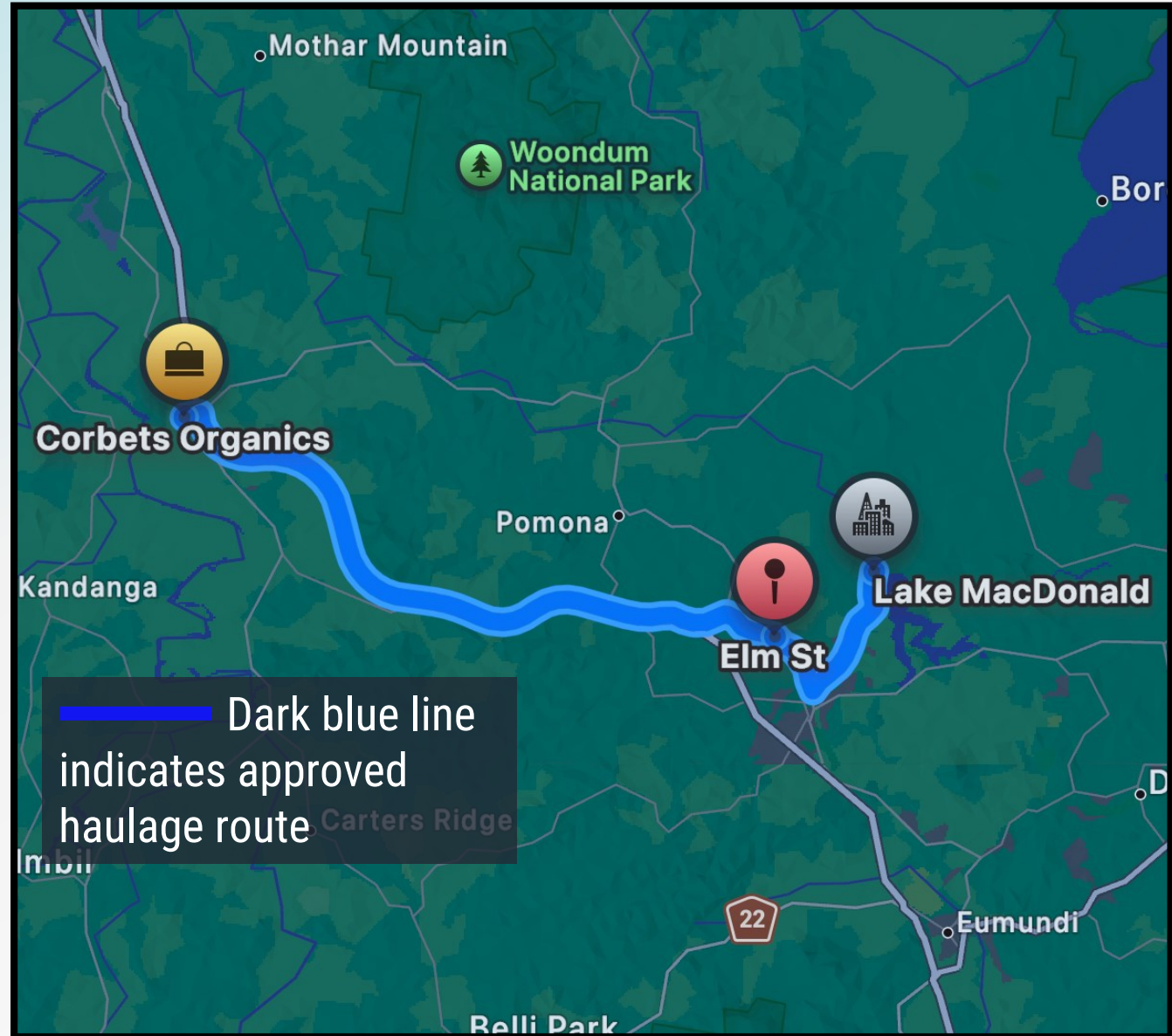
Project requirement:

- Rockfill required for cofferdam construction and temporary working platforms

Date/year estimate:

- May 2025 – Dec 2025

***Note:** details are subject to change depending on quarry supply and availability



Haulage routes

Boral, Moy Pocket

Anticipated use throughout project:

- Rockfill and gravel import for haul roads
- Possible aggregate supply for the batch plant

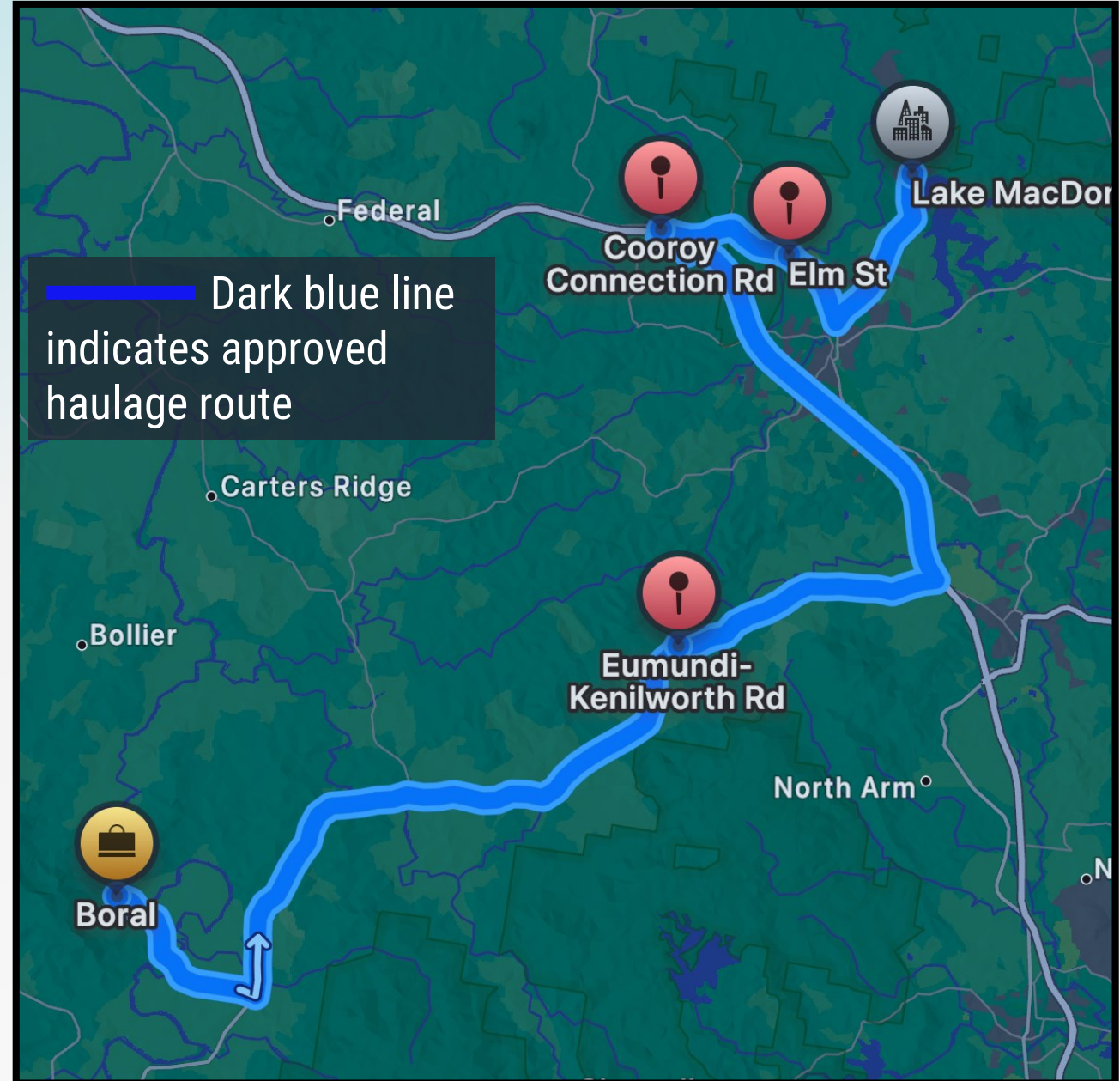
Project requirement:

- Site establishment and haul roads
- If required: Rockfill for cofferdam activities
- Aggregate supply for concrete production
– *Pending contract award*

Date/year estimate:

- May 2025 – Nov 2027

***Note:** details are subject to change depending on quarry supply and availability



Haulage routes

Cordwells, Kin Kin

Anticipated use throughout project:

- Anticipated that import of specialised fill will come from Cordwell's Chevallum Quarry
- Supplement rock from other quarries as needed

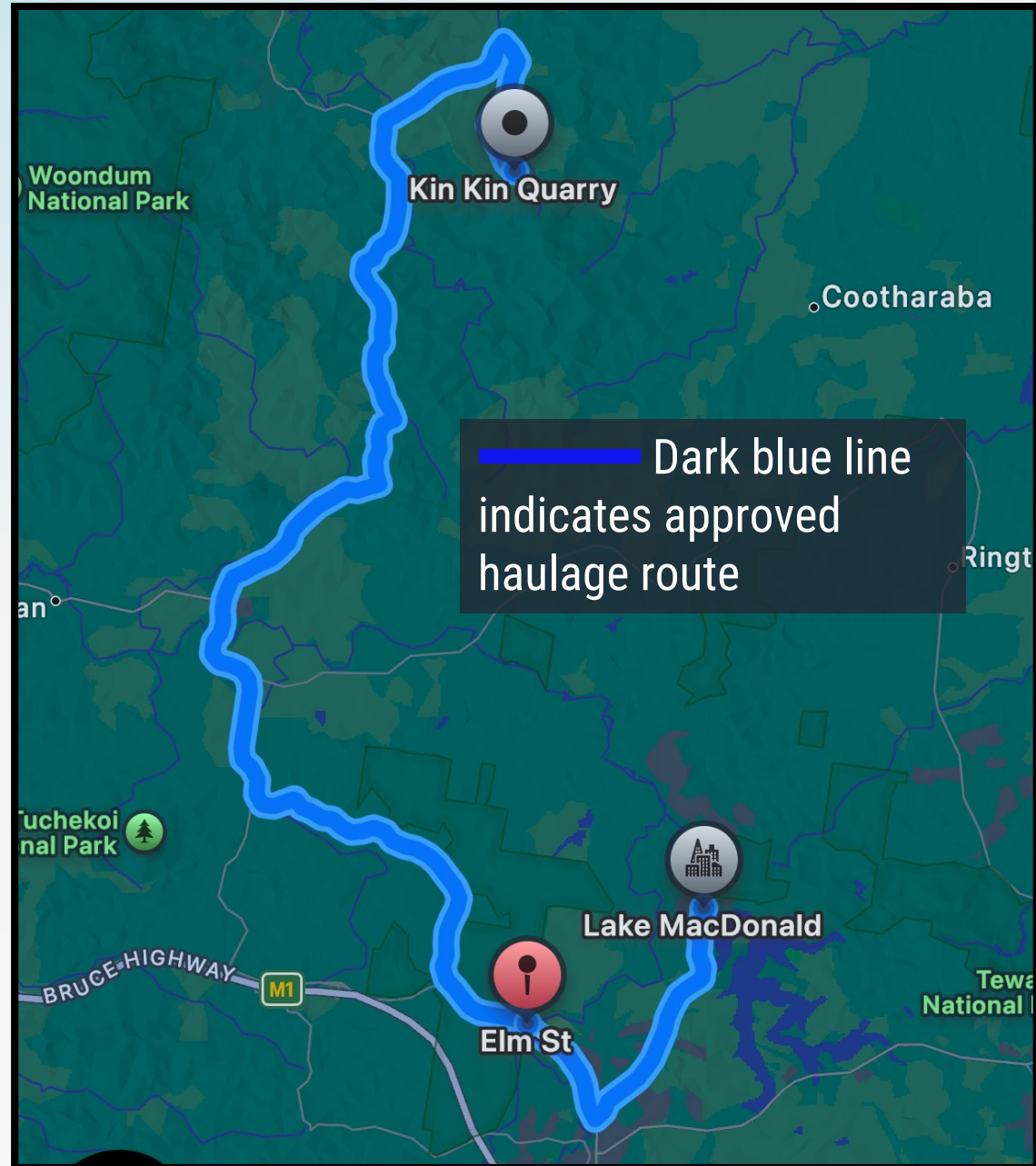
Project requirement:

- Embankment fill material

Date/year estimate:

- Q2 2025 supplement rock as needed
- Q1 2027 specialised fill

***Note:** details are subject to change depending on quarry supply and availability



Haulage routes

Cordwells, Chevallum

Anticipated use throughout project:

- Import of specialised fill will come from Cordwell's Chevallum Quarry

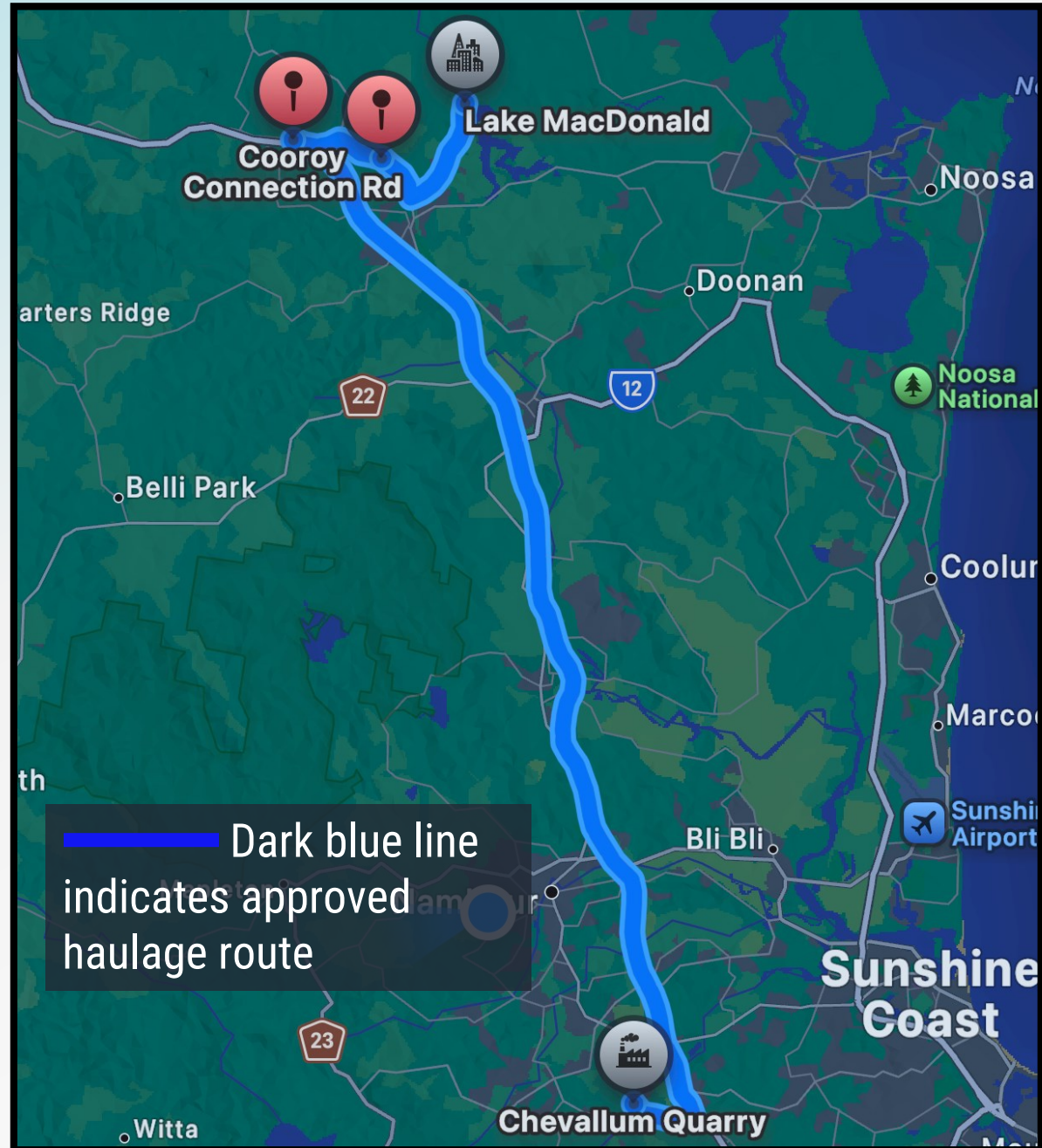
Project requirement:

- Embankment fill material

Date/year estimate:

- Q1 2027

*Note: details are subject to change depending on quarry supply and availability



Noise, dust and vibration

- Mitigations first implemented at the source then reassessed
- Monitoring undertaken to collect baseline data before main construction
 - Completed for dust and noise
- Monitoring and locations



Resident mitigation

- The project team is planning to implement mitigation measures for adjacent residents affected by construction.
- The team has commenced engagement with directly affected residents to deliver tailored mitigation measures aimed at reducing construction impacts.
- Mitigation measures are being guided by noise and vibration assessments for nearby properties and customised to the needs of affected residents, on a case-by-case basis.
- The project team remains committed to minimising disruptions for affected residents where possible.

Noosa Trails Network

- Wayfinding signage has been developed and installed
- Recreation change signage has been updated to ensure clear messaging
- Trail signs have been updated
- Web and social posts for this will go live end of week

Noosa Biosphere Trails

ATTENTION

During the Lake Macdonald Dam Improvement Project:

- Parking for Noosa Trails will no longer be available from Kookaburra Park.
- Parking for access to the Noosa Trail network will be available from Lake Macdonald Park.
- Pedestrian access to the Noosa Trail Network will be available from Lake Macdonald Park to Kookaburra Park instead.



For more information

E projectinfo@seqwater.com.au

P 07 5472 1565 (24/7)

Dam Improvement Program

Lake Macdonald

Recreation changes – Trail 4 - Noosa Trail network

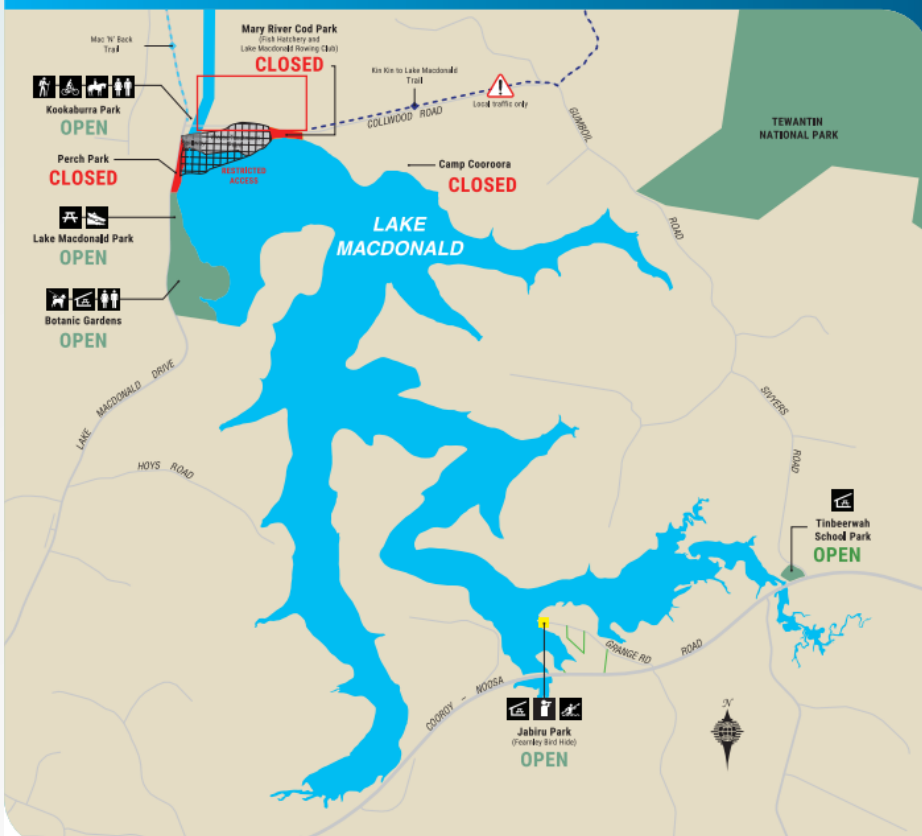



Mary River Cod Park and boat ramp closure

- Park is now closed for the duration of the project.
- Recreation information has been updated.



Temporary Recreation Changes





Dam Improvement Program

Lake Macdonald Dam Safety Upgrade

Facilities

Open	Closed
Jabiru Park (paddle craft access only)	Boat ramps (Mary River Cod Park)
Kookaburra Park (Council)	Camp Cooroora
Lake Macdonald Park (Council)	Fishing jetty at Perch Park off Lake Macdonald Drive
Noosa Botanic Gardens (Council)	Lake Macdonald Rowing Club
Tinbeerwah School Park (Council)	Mary River Cod Park
	Perch Park (Council)

Permitted (at open facilities only)	Not Permitted
Barbecues	Camping
Boating (electric)	Fish stocking
Bird watching	
Dogs on leash	
Fishing	
Horse riding	
Mountain biking	
Paddling, kayaking, rowing, sailing and canoeing	
Picnicking	
Trail walking	

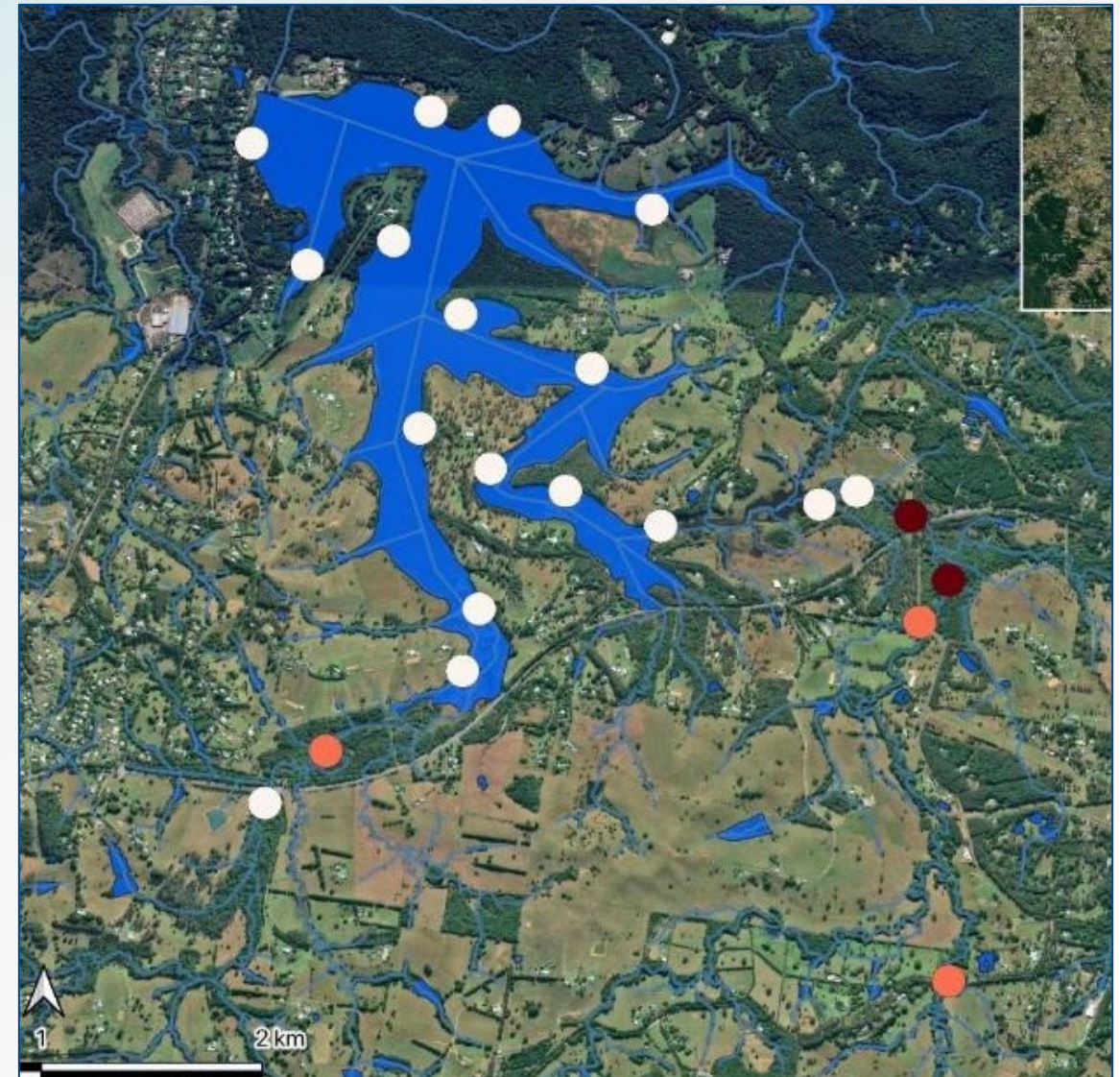
P: 1800 902 294
 E: lakemacdonald@seqwater.com.au
 W: yourseqwater.com.au

Environment

Enviro Study Findings

Platypus

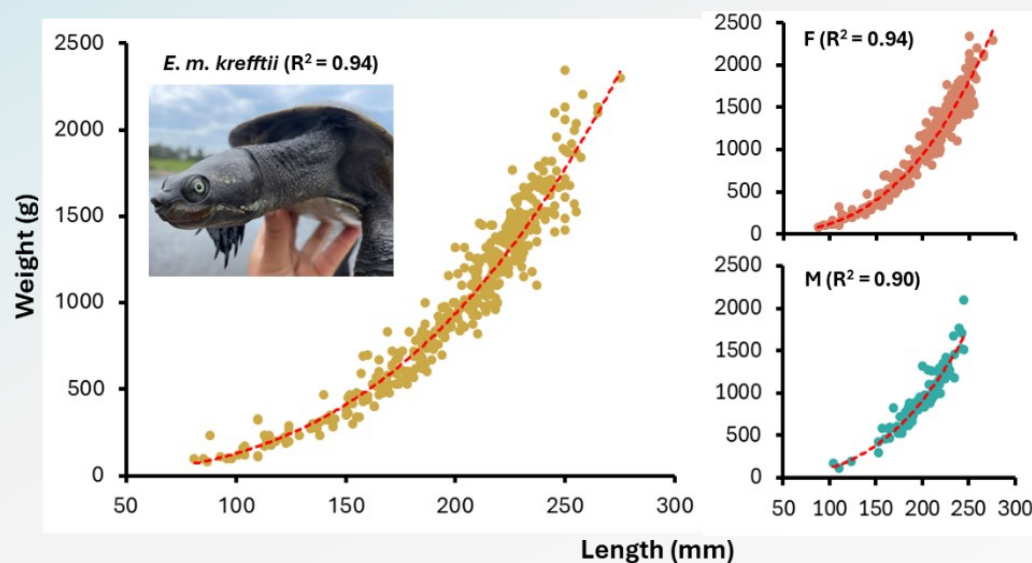
- eDNA samples from 22 sites (66 samples)
- Bank searches for burrows at dawn and dusk
- Continuous monitoring and camera trapping
- 3 low level detections – orange (refer to map)
- 2 significant detections – red (refer to map)
- 1 possible visual observation
- Camera traps set in 10 sites
- Four burrow sites in upper lake not active
- Burrow site in upper Six Mile Creek looks active
- Quarterly monitoring during construction with eDNA and ongoing camera trapping



Enviro Study Findings

Turtles

- Large mesh fykes and cathedral traps in 15 sites
- 490 turtles captured - kreft, broad shell and saw shell turtles
- Low diversity
- No threatened turtles
- On-going monitoring using a body condition index
- Quarterly monitoring during construction



Enviro Study Findings

Fish

- 12,339 fish captured across 14 species
- 6 small bodied species
- 6 large bodied species
- 2 pest species
- No tilapia and no threatened species recorded
- Fish salvage requirements being reviewed in light of fish survey results

Small bodied fish	Large bodied fish
High abundances of small bodied fish (6,431)	Six species – 5,042 large bodied fish Bony bream (81.6%) (21% mature fish)
Mostly olive perchlet, hardyhead and carp gudgeon	
Mean of 433 fish per overnight fyke net	Low numbers of stocked species Australian bass (0.7%) (300mm-460mm) Saratoga (0.3%) (500mm -725mm) No golden or silver perch. No cod or lungfish
Highest in lake arms (Six Mile Creek main arm, high in Cooroy Creek and main dam east)	Populations of self-sustaining native fish Banded grunter (8.5%) Freshwater catfish (5.2%) Long finned eels (3.7%)
Low in Upper Six Mile Creek, main basin, and mid lake.	

Rain event – 29-30 March 2025

Sediment loss and siphons

- Downstream of spillway flooded resulting in temporary siphons 'floating' and impacting existing access road barrier
- Sediment run off into existing lagoon from construction gravel hardstand



Rain event – 29-30 March 2025

Timelapse



Rain event – 29-30 March 2025

Sediment loss and siphons – clean up



Rowing Club Development Application

Rowing Club

- DA approved for relocation to Hoy Road on 17 April 2025.
- Submitted a notice to Noosa Shire Council (NSC) suspending the appeal period for the DA. This is a suspension of the appeal period, not a stop. The purpose of that suspension is to now allow the change representations to be made.
- Ongoing period by which the change representation can be lodged with NSC, period now ending 5 June 2025.
- Initial changes requested by the Lake Macdonald Rowing Club have been provided to NSC. The change request is drafted and is being distributed.

Future meeting discussions

Future meetings

Meeting 4 11 August

- Demolition
- Fish passage and salvage

Meeting 5 19 November

- Wet season
- Gympie Weir upgrade

Other future meeting discussions

- Legacy projects
- Future construction phase breakdowns

Questions

Conclusion

Next meeting Monday 11 August 2025

Thank you