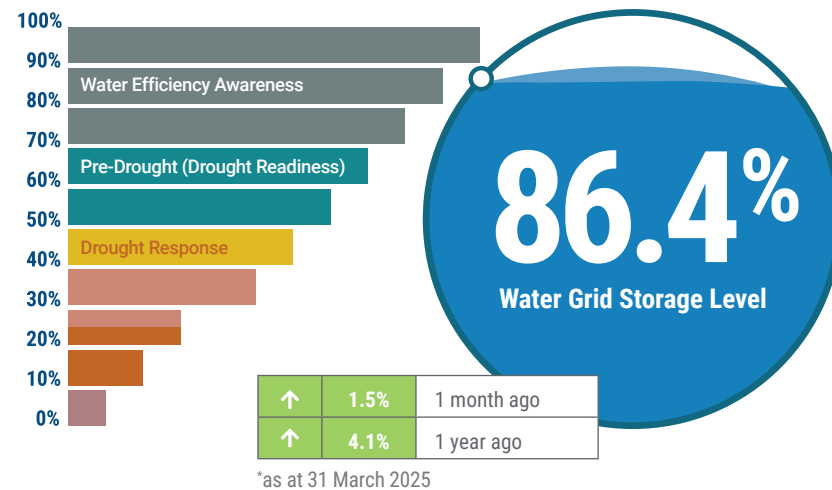


WATER SECURITY STATUS REPORT

March 2025

Overall water security position



In March, rainfall was very much above average across the region and maximum temperatures were average to above average. Water Grid Storage (WGS) level increased by 1.5% in March 2025.

The El Niño–Southern Oscillation (ENSO) remains neutral. Sea surface temperatures (SSTs) in the Australian region were the second warmest on record during March 2025.

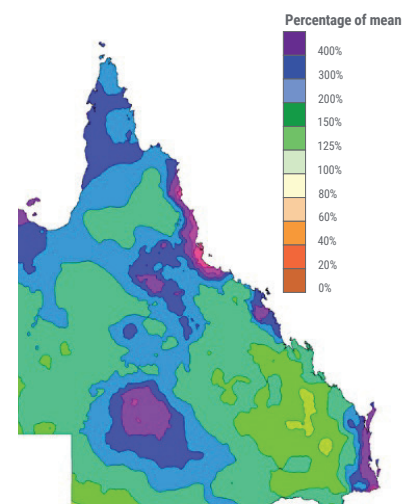
Storage levels are now sitting at 86.4% (at 31 March 2025) meaning the region is in the Water Efficiency Awareness phase of the SEQ Drought Response Plan. BOM advises there is a 50-60% chance of above median rainfall in May to June, and a strong expectation of hot conditions (>80% chance of above median maximum temperatures).

The source is meeting demand in all off-grid communities.

Queensland rainfall percentages

01 March 2025 to 31 March 2025

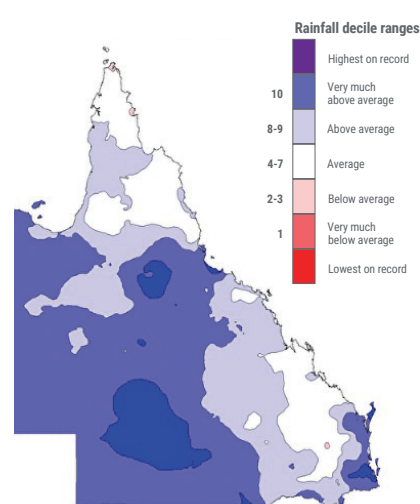
Australian Gridded Climate Data



Queensland rainfall deciles

01 March 2025 to 31 March 2025

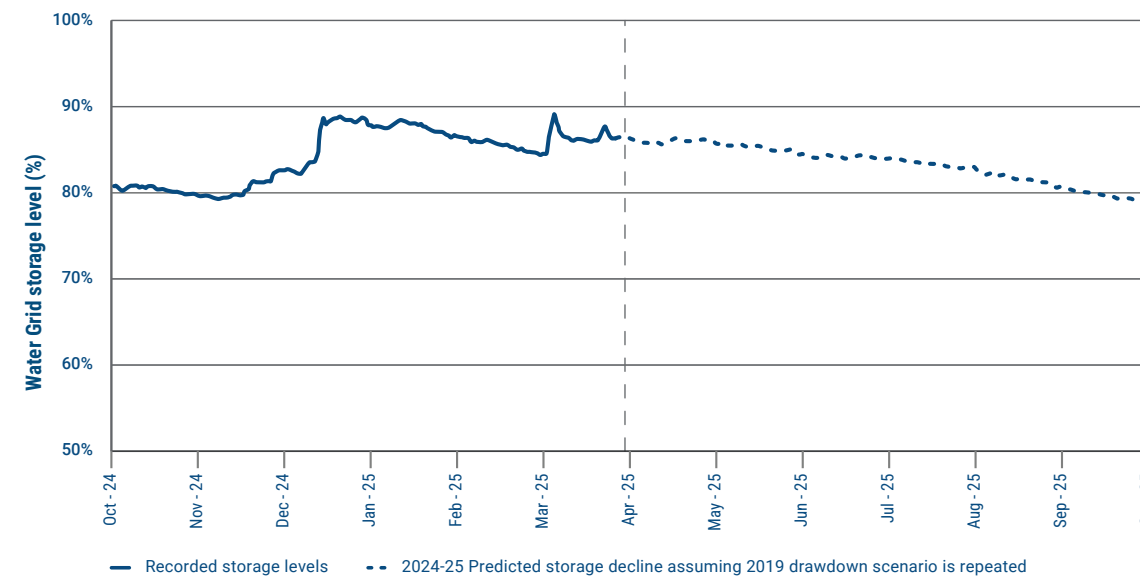
Australian Gridded Climate Data



Water Grid storage

Global SSTs (sea surface temperatures) remain substantially above average. SSTs in March 2025 were the second warmest on record for March.

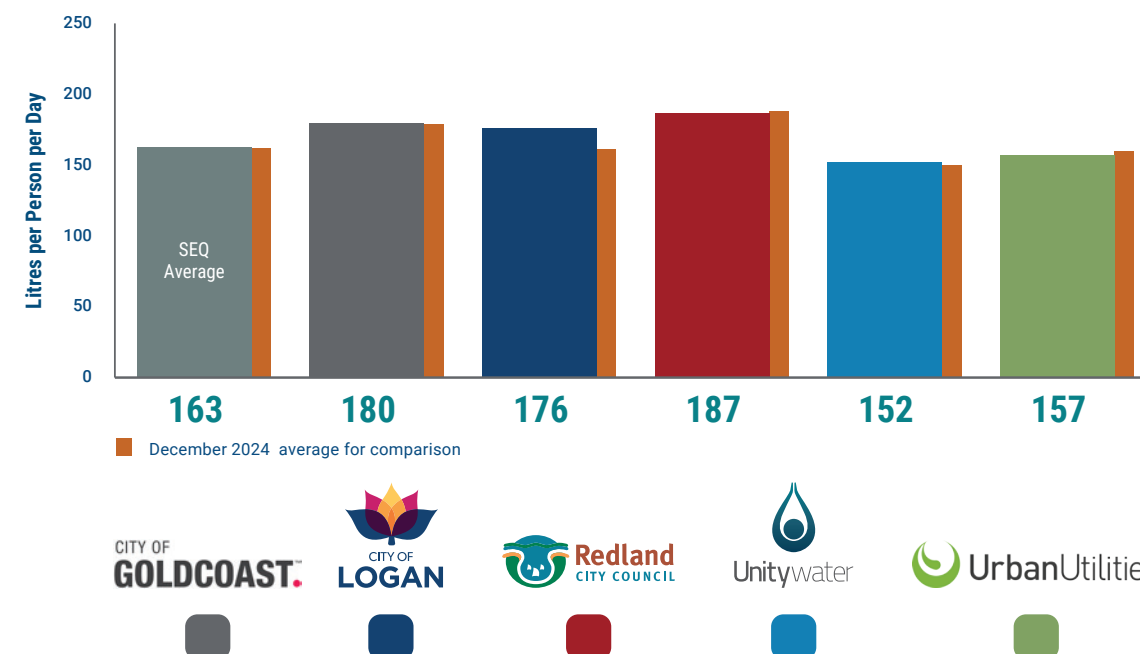
If very dry conditions return (similar to the very dry year of 2019) storages could return to 70% by January 2026, and to a level of 60% by September 2026.



Average daily residential consumption

Average residential consumption in March was 163 litres per person per day (LPD). This represents an increase in consumption compared to the 162 LPD recorded in the same month last year.

*Date range is 27/02/2025 - 26/03/2025 and 29/02/2024 - 27/03/2024



Water Grid operation

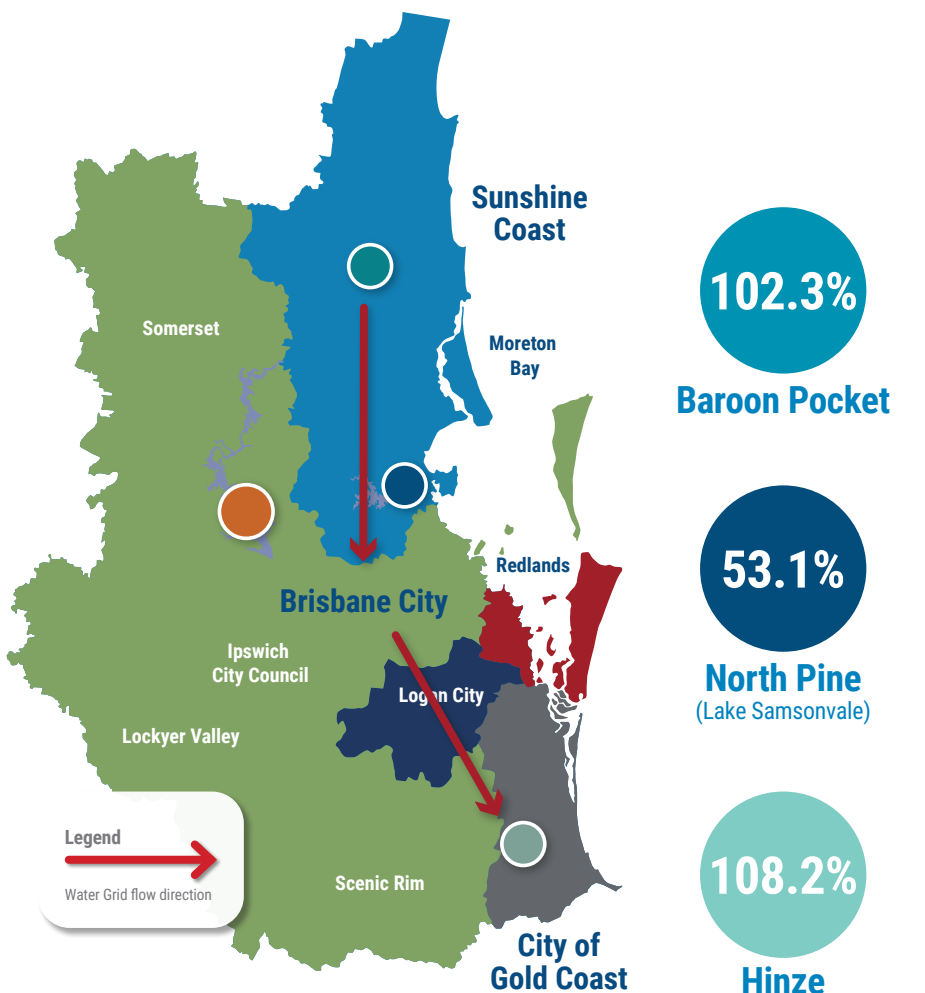
The Northern Pipeline Interconnector has been operated in a southerly flow direction. The Southern Regional Water Pipeline has been operated in a predominantly southerly flow direction, however it was operated in a northerly flow direction to support the network during Tropical Cyclone Alfred.

Purified Recycled Water

The Western Corridor Recycled Water Scheme continues to provide some PRW to industrial customers.

Desalinated water production

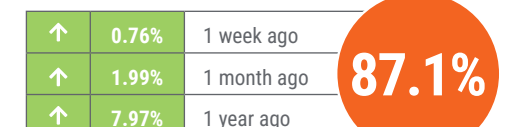
Gold Coast Desalination Plant (GCDP) continues to operate at minimal levels, with Water Grid Storage levels above 70%, supporting planned works across the grid as required.



Wivenhoe/ Somerset (Combined)

Full supply capacity 1,545,089 ML Current capacity 1,346,466 ML

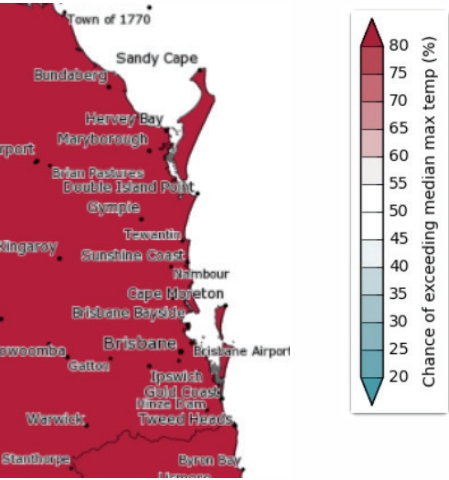
Wivenhoe and Somerset Dams are SEQ's largest storages, and combined make up about 70% of the region's water supply (dams).



Weather outlook

Temperature

The Bureau of Meteorology (BOM) outlook is that there is a greater than 80% chance of exceeding median maximum temperature from May to June.

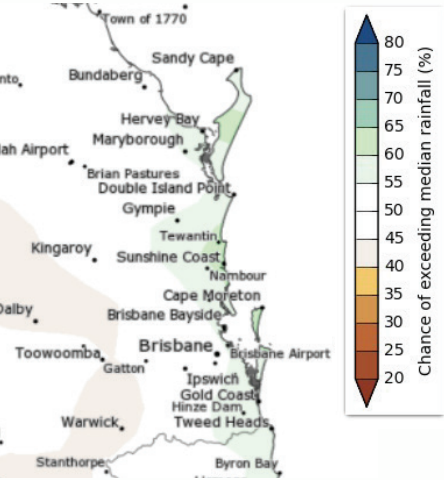


http://www.bom.gov.au/climate/outlooks/#/temperature/maximum/median/seasonal/0

*as at 31 March 2025

Rainfall

The BOM outlook is that there is a 50-60% chance of receiving above average rainfall from May to June across the SEQ region.



http://www.bom.gov.au/climate/outlooks/#/rainfall/median/seasonal/0

Off-grid community drought status

The SEQ Water Grid allows us to move treated drinking water around the region. Off-grid communities are not connected to the SEQ Water Grid.

*This data has been updated as at 31 March 2025

Sunshine Coast Regional Council

1	Kenilworth	Mary River at Bellbird Creek flow: 813.1 ML/day	●	●
---	------------	---	---	---

Moreton Bay Regional Council

2	Dayboro	Groundwater Well No 1 standing water level: River is in flood	●	●
---	---------	---	---	---

Somerset Regional Council

3	Jimna	Yabba Creek flow - Big Hole Weir is flowing.	●	●
---	-------	--	---	---

4	Linville	Brisbane River at Linville 447.6 ML/day	●	●
---	----------	---	---	---

Redland City Council

5	Amity Point			
---	-------------	--	--	--

6	Point Lookout	North Stradbroke Island Groundwater standing water level (primary bore): 19.467 m AHD	●	●
---	---------------	---	---	---

7	Dunwich			
---	---------	--	--	--

Scenic Rim Regional Council

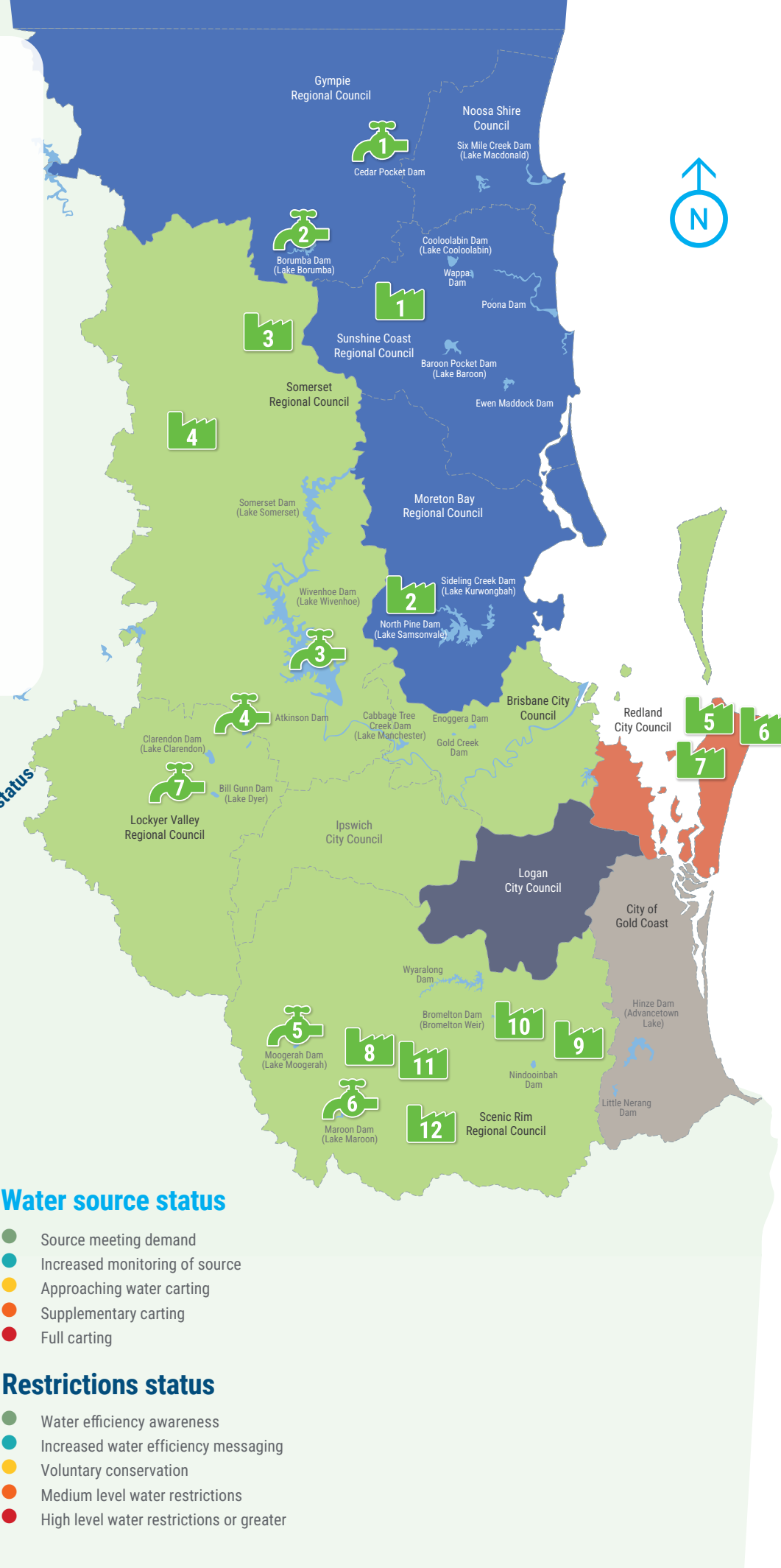
8	Kalbar (Boonah, Aratula and Mount Alford)	Moogerah Dam storage level: 106.5%	●	●
---	---	------------------------------------	---	---

9	Canungra	Canungra Creek flow: 587.4 ML/day	●	●
---	----------	-----------------------------------	---	---

10	Beaudesert			
----	------------	--	--	--

11	Kooralbyn	Maroon Dam storage level: 106.5%	●	●
----	-----------	----------------------------------	---	---

12	Rathdowney			
----	------------	--	--	--



Water supply scheme status

Seqwater supplies water to rural landholders and businesses that are licensed to take water from dams and waterways via water supply schemes. The amount of water that can be extracted by licensed irrigators varies according to local water conditions. In times of drought or low flows, irrigation entitlements may be restricted or suspended.

*as at 31 March 2025



Full allocation



Restricted



Suspended



Cedar Pocket Water Supply Scheme

Cedar Pocket Dam currently 104.4% (Down 4.2% from last month)
Announced Allocations Medium Priority 100%



Mary Valley Water Supply Scheme

Borumba Dam currently 101.4% (Up 1.5% from last month)
Announced Allocations Medium Priority 100% (also supplies high priority)



Central Brisbane Water Supply Scheme

Wivenhoe Dam/Somerset Dam currently 87.1% (Up 2% from last month)
Announced Allocations Medium Priority 100% (also supplies high priority)



Lower Lockyer Water Supply Scheme

Atkinson Dam currently 101.4% (Up 12.1% from last month)
Announced Allocations Medium Priority 100%



Warrill Valley Water Supply Scheme

Moogerah Dam currently 106.4% (Up 6.6% from last month)
Announced Allocations Medium Priority 100% (also supplies high priority)



Logan River Water Supply Scheme

Maroon Dam currently 106.5% (Up 6.9% from last month)
Announced Allocations Medium Priority 100% (also supplies high priority)



Central Lockyer Water Supply Scheme

Clarendon Dam & Bill Gunn Dam currently 99.3% (Up 17.5% from last month)
Announced allocation (surface water) Morton Vale 100%, Medium Priority Zones 100%
Announced allocation (groundwater) Medium Priority 100%, Low Priority 100%