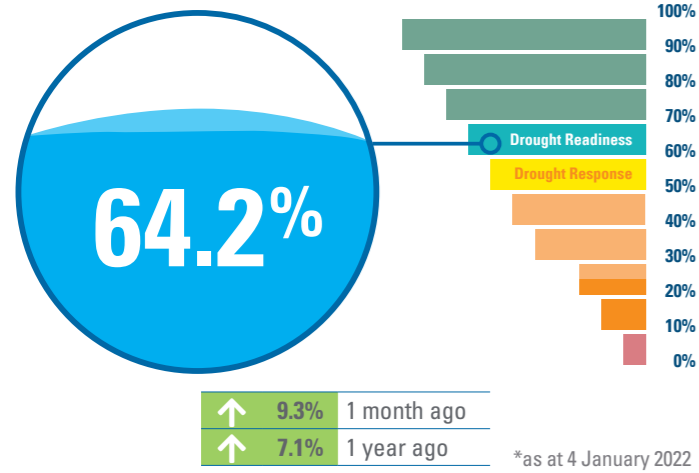
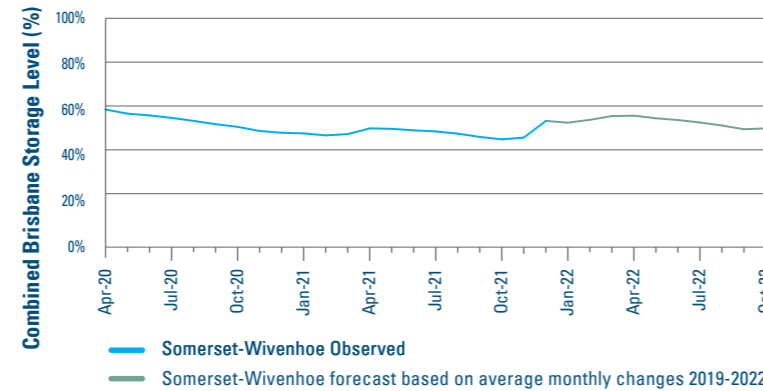


Overall water security position



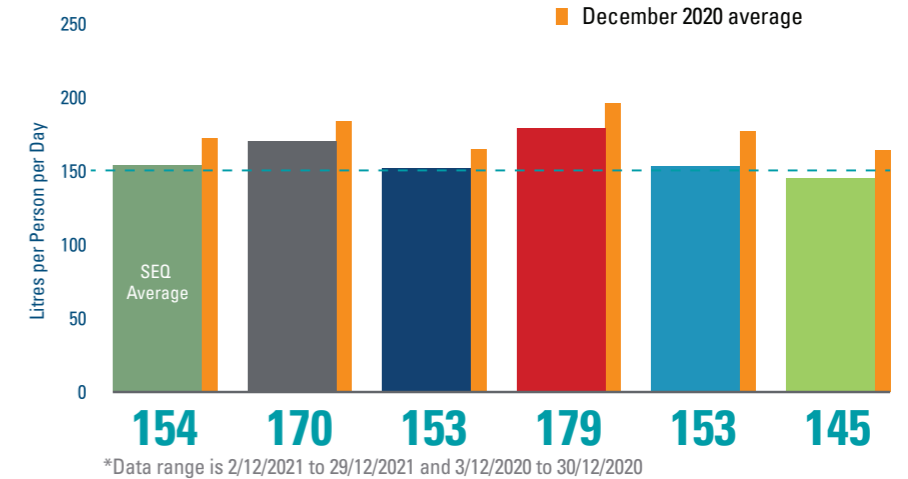
The South East Queensland (SEQ) Water Grid storage level has continued to increase this month and the region has moved in to Drought Readiness. Many of the region's smaller storages are at or near full. SEQ's largest storages, Wivenhoe and Somerset Dams - which combined make up about 70% of the region's water supply (dams) - continue to be an area of interest, with a combined storage level of 53.9%.

Wivenhoe and Somerset future levels should recent conditions repeat



Average daily residential consumption

Average daily consumption has increased slightly in December up to 154 litres per person per day (LPD) this month compared with last month (November average was 150 LPD). It is recognised that recent increases in the Water Grid storage level means that the likelihood of the Grid reaching 50% (which is the level at which water restrictions are imposed) in the near future is unlikely.

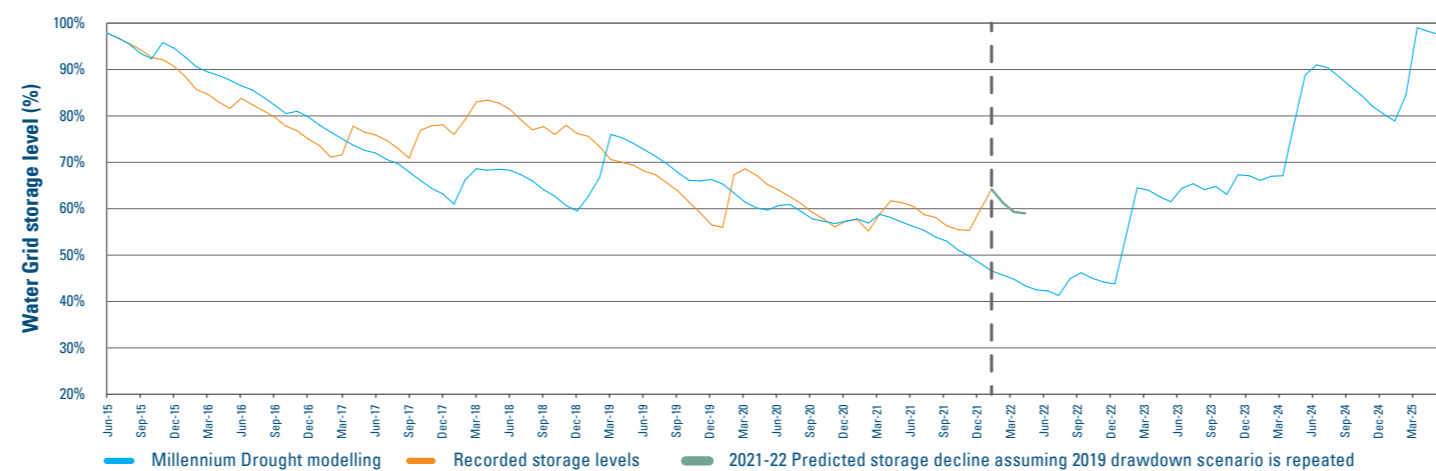


Water Grid storage

Water Grid storage actual drawdown to the start of January 2022 with projected drawdown to April 2022

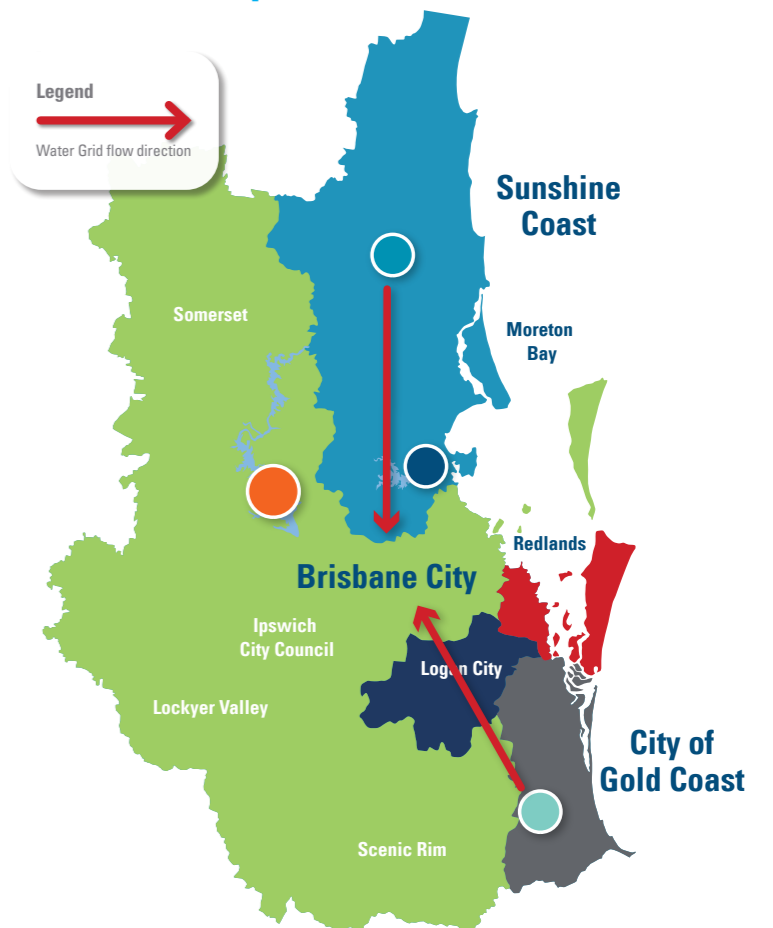
The SEQ Water Grid drawdown graph below shows historical storage data and a projected four month drawdown if the rate observed during the dry calendar year of 2019 was repeated. Due to recent rainfall, drawdown projections have continued to improve and Grid levels are unlikely to drop below 60% (Drought Response) before Autumn. The 2019 data is used because it was a particularly dry year, however it is noted that a repeat of these conditions is considered unlikely at this stage based on current forecasts. The Millennium Drought is also shown on the following graph, adjusted with today's demand, current Grid and drought response plan to compare drawdowns over an extended drought period.

1. This projected drawdown does not account for adjustments to demand and supply conditions due to operation of the Gold Coast Desalination Plant



End of month storage decline assuming a repeat of the particularly dry 2019 year (2020 data not used):
 Jan 22 - 64.2% | Feb 22 - 61.3% | Mar 22 - 59.3% | Apr 22 - 59.0%

Water Grid operation



Wivenhoe/Somerset¹

Full supply capacity **1,545,089 ML**
Current capacity **832,981 ML**

↑ 0.5%	1 week ago
↑ 3.0%	1 month ago
↑ 6.3%	1 year ago

¹combined dam levels

92.6%

Baroon Pocket

67.9%

North Pine
(Lake Samsonvale)

99.9%

Hinze

Purified Recycled Water

Seqwater is working with stakeholders to investigate reducing production of Purified Recycled Water, as Grid storage levels have risen above 60% and the region has returned to Drought Readiness.

Work has continued to progress on the recommissioning of two additional trains at Luggage Point Advanced Water Treatment Plant.

Desalinated water production

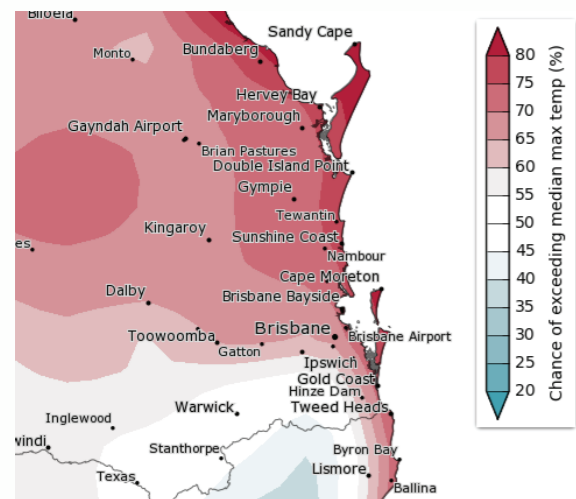
The Southern Regional Water Pipeline has operated in the northern direction and the Northern Pipeline Interconnector has operated in the southern direction for this month.

The Gold Coast Desalination production has been reduced in response to increased Grid levels.

Weather outlook

Temperature

The Bureau of Meteorology (BOM) outlook is that there is a 55-80% chance of exceeding median maximum temperature January to March 2022.

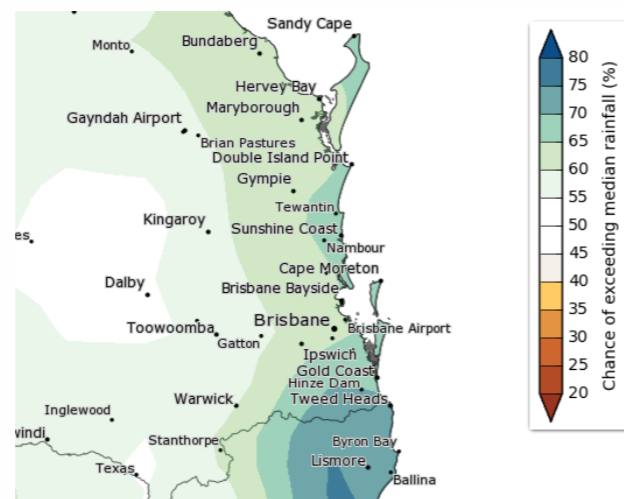


<http://www.bom.gov.au/climate/outlooks/#/temperature/maximum/median/seasonal/0>

*as at 6 January 2022

Rainfall

The BOM outlook is that there is a 55-70% chance of exceeding median rainfall January to March 2022.



<http://www.bom.gov.au/climate/outlooks/#/rainfall/median/seasonal/0>

Off-grid community drought status

The SEQ Water Grid allows us to move treated drinking water around the region. Off-grid communities are not connected to the SEQ Water Grid. This data has been updated as at 4 January 2022

Sunshine Coast Regional Council

1 Kenilworth Mary River at Bellbird Creek flow: ~ 261 ML/day ● ●

Moreton Bay Regional Council

2 Dayboro Groundwater Well No 1 standing water level: 41.6 m AHD ● ●

Somerset Regional Council

3 Jimna Yabba Creek flow: water flowing over the Big Hole Weir ● ●

4 Linville Brisbane River at Linville: ~ 173.3 ML/day ● ●

Redland City Council

5 Amity Point ● ●

6 Point Lookout North Stradbroke Island Groundwater standing water level (primary bore): 17.5 m AHD* ● ●

7 Dunwich ● ●

Scenic Rim Regional Council

8 Kalbar (Boonah, Aratula and Mount Alford) Moogerah Dam storage level: 76.9% ● ●

9 Canungra Canungra Creek flow: ~ 129.1 ML/day ● ●

10 Beaudesert ● ●

11 Kooralbyn Maroon Dam storage level: 100% ● ●

12 Rathdowney ● ●

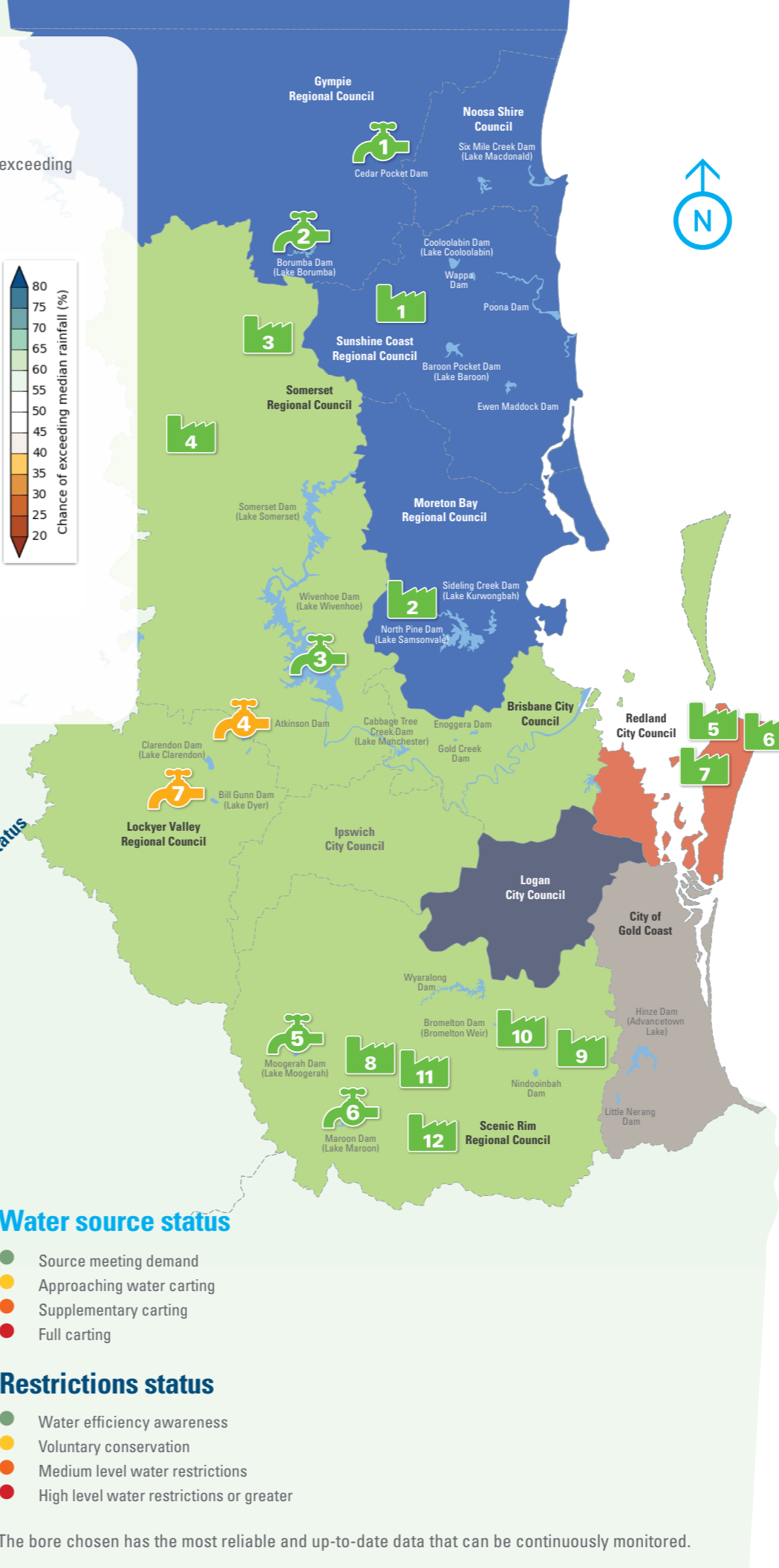
Water source status

- Source meeting demand
- Approaching water carting
- Supplementary carting
- Full carting

Restrictions status

- Water efficiency awareness
- Voluntary conservation
- Medium level water restrictions
- High level water restrictions or greater

*The bore chosen has the most reliable and up-to-date data that can be continuously monitored.



Water supply scheme status

Seqwater supplies water to rural landholders and businesses that are licensed to take water from dams and waterways via water supply schemes. The amount of water that can be extracted by licensed irrigators varies according to local water conditions. In times of drought or low flows, irrigation entitlements may be restricted or suspended.

This data has been updated as at 4 January 2022



Full allocation



Restricted



Suspended



Cedar Pocket Water Supply Scheme

Cedar Pocket Dam currently 102.5% (up 0.7% from last month)
Announced allocations Medium Priority 100%



Mary Valley Water Supply Scheme

Borumba Dam currently 99.8% (down 1.1% from last month)
Announced allocations Medium Priority 96% (also supplies high priority)



Central Brisbane Water Supply Scheme

Wivenhoe Dam/Somerset Dam currently 53.9% (up 3.0% from last month)
Announced allocations Medium Priority 100% (also supplies high priority)



Lower Lockyer Water Supply Scheme

Atkinson Dam currently 26.2% (up 9.4% from last month)
Announced allocations Medium Priority 36%



Warrill Valley Water Supply Scheme

Moogerah Dam currently 76.9% (up 7.2% from last month)
Announced allocations Medium Priority 100% (also supplies high priority)



Logan River Water Supply Scheme

Maroon Dam currently 100% (down 1.8% from last month)
Announced allocations Medium Priority 100% (also supplies high priority)



Central Lockyer Water Supply Scheme

Clarendon Dam & Bill Gunn Dam currently 26.9% (up 9.1% from last month)
Announced allocation (surface water) Morton Vale 86%, Medium Priority 29% (all zones)
Announced allocation (groundwater) Medium Priority 80%, Low Priority 60%