

Lake Clarendon

RECREATION GUIDE



seqwater.com.au





OUR VISION

To manage access to recreation opportunities while protecting natural resources and water quality.

About Lake Clarendon

Lake Clarendon is an off-stream storage completed in 1992. The lake is 10km north-east of Gatton, has a catchment area of 3.4 km² and holds 24,276 megalitres of water at full supply.

Lake Clarendon provides water to the Central Lockyer Valley irrigation scheme. The water level in the lake varies depending on rainfall and demand from irrigation customers.

RECREATION REVIEW UPDATE

Seqwater is committed to providing quality recreation facilities that everyone can enjoy. We wanted to know what the community thought of current facilities and what suggestions you had for the future, so in 2013 we started a full Recreation Review across our assets. We appreciate the efforts of everyone who took the time to participate in our workshops and online surveys.

While we want to implement as many ideas as possible, Seqwater must remain committed to protecting our natural environment and minimising the risks to water quality.

Changes will be implemented once funding has been secured and an environmental impact analysis has been completed. Progress updates, along with details of the feedback received is available at seqwater.com.au/recreview.

We value the unique status of the Jagera People as the original owners and custodians of the land and water around Lake Clarendon.

Protecting our waterways & the environment

We all need to do our part to ensure we keep our waterways healthy. It's not just our bushland areas that are threatened by weeds, it is also our wetlands, waterways and lakes that are suffering.

Serious aquatic weeds like Water Hyacinth, Salvinia and Cabomba are very invasive and out-compete local species, seriously affecting the local ecology and water quality. Weeds are able to reproduce from even the smallest of fragments or seeds, and trying to control these weeds is time consuming and costly.

You can help protect our waterways from weeds by:

- removing all visible mud and plants from your equipment, boats, trailers, boots, crab pots etc. before leaving
- eliminating water from all equipment before transporting it anywhere, as the water may contain plant fragments or seeds

- cleaning and drying anything that came into contact with the water
- cleaning boats, motors, trailers, floats, anchors etc before leaving. If possible allow the equipment to dry for about five days before entering new waters
- not releasing or putting plants, fish or other animals into a body of water they did not come from. This is an important step to prevent the spread of introduced species of plants and animals into our waterways.

To protect our water supply please:

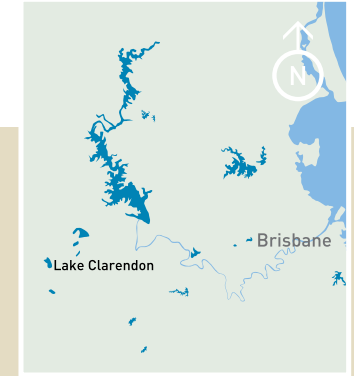
- leave the facilities as you found them. Do not cause damage to any property, flora or fauna
- place litter in the bins provided
- leave your pets at home. Dogs and other domestic animals can disturb the wildlife that lives in our natural areas.

DOMESTIC PETS

The areas around Lake Clarendon are home to an abundance of native wildlife. To protect this wildlife, and for public safety, domestic pets and other animals cannot be brought into any of the catchment, lake or recreation areas at Lake Clarendon.



Recreation location map



Picnics and Playgrounds



Picnicking and BBQs

There is a small picnic area provided by the Lockyer Valley Regional Council located off Main Green Swamp Road. The site has basic facilities including picnic tables and toilets. No BBQ facilities are available at Lake Clarendon.

Playgrounds are not available at Lake Clarendon. The Lockyer Valley Regional Council has a number of parks in the council area with playgrounds for visitors to enjoy.



Boats, Bait and Bathers



Boating

Motorised watercraft are not permitted on Lake Clarendon.

Paddle craft will be permitted on Lake Clarendon once a suitable launch point is established.

Please be aware that Lake Clarendon is an irrigation dam and provides water for agricultural purposes. Lake levels will fluctuate frequently. Always exercise care when launching and retrieving paddle craft.

RECREATION REVIEW UPDATE

Lake Clarendon will be opened to paddle craft once a suitable launch point is established. Progress updates will be available at seqwater.com.au/recreview.



Fishing

Fishing will be allowed on Lake Clarendon from paddle craft and from the shoreline at the designated paddle craft launch point.

The lake is not currently stocked with fish and no fishing permit is required.

RECREATION REVIEW UPDATE

Fishing will be permitted at Lake Clarendon once the paddle craft launch point is established. Progress updates will be available at seqwater.com.au/recreview.



Swimming

Swimming is not permitted at Lake Clarendon.

There are aquatic centres provided by the local council in Gatton and Laidley for visitors to enjoy.

Tracks and Trails

There are no trails located at Lake Clarendon.



RECREATION REVIEW UPDATE

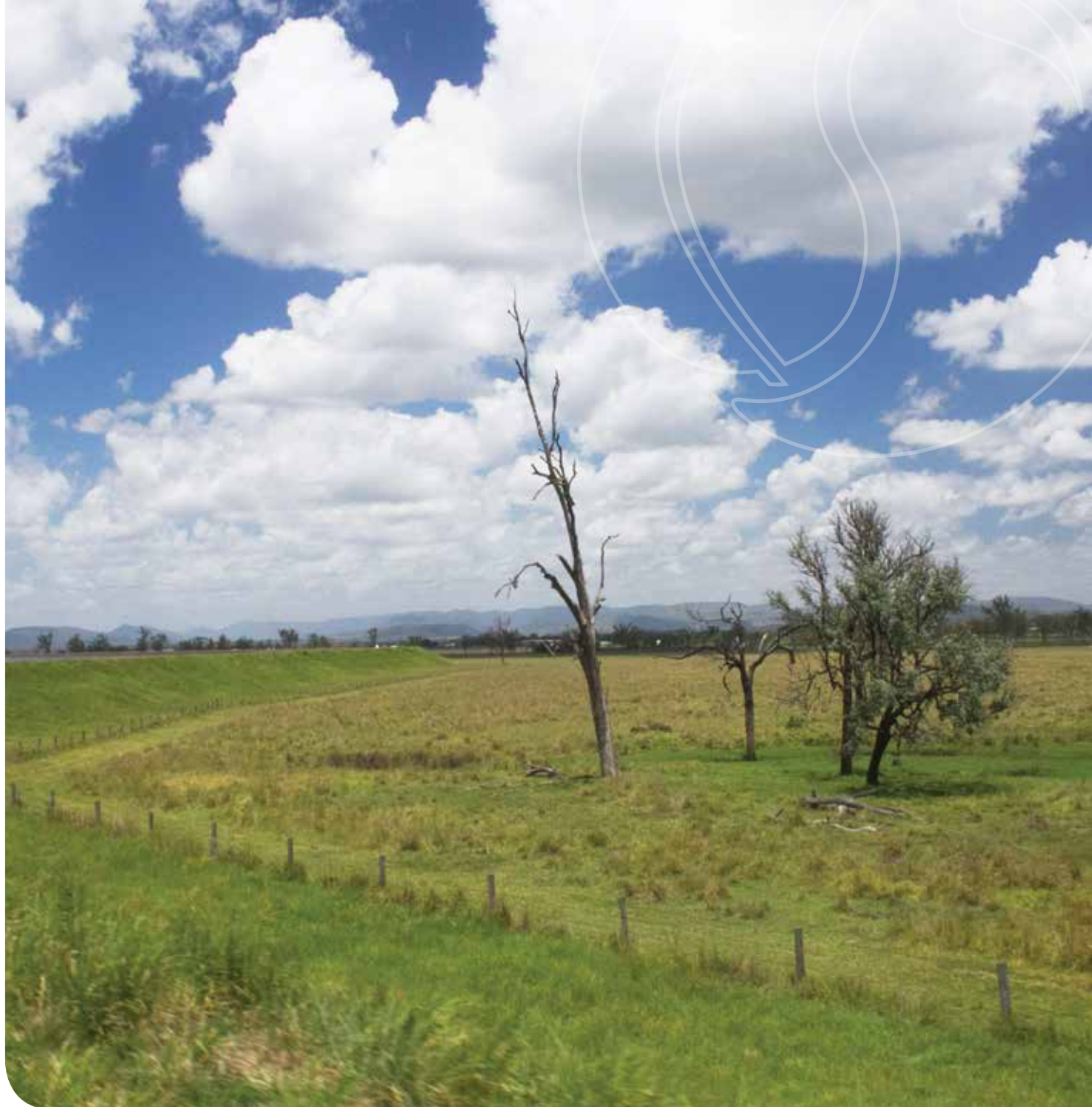
Seqwater will investigate a new walking trail adjacent to the dam wall which will allow community members to observe birdlife. Progress updates will be available at seqwater.com.au/recreview.

Rest and Relaxation



Camping

There are no camping areas at Lake Clarendon.



Events and Other Activities

Events

Before you hold an event at any Seqwater site, you will need to apply for a permit through our website. Please submit applications at least four weeks prior to your event to allow sufficient time for your application to be processed.

Commercial Activities

Seqwater is dedicated to providing quality facilities to the public.

We work in conjunction with commercial operators, where suitable, to enhance the public's enjoyment and appreciation of our natural areas. You can find further details about commercial activities, the submission process and our Commercial Activities Policy, on our website.

Site Tours

Seqwater's educational tours are an opportunity to learn about our operations and the link between catchments, storage and treatment as part of the broader water cycle.

Tours are available to primary and secondary schools, TAFE and universities, community groups and professional delegations, across a number of sites.

For bookings or for more information, visit our website and complete the site tour booking form or email education@seqwater.com.au.

Do's and Don'ts

YES

- ✓ bird watching
- ✓ canoeing
- ✓ kayaking
- ✓ fishing

NO

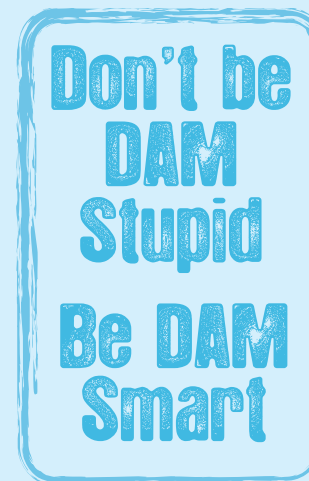
- ✗ dogs
 - ✗ 4wd driving and motorbike riding
 - ✗ dumping rubbish or littering
 - ✗ hunting (of any form)
 - ✗ camping
 - ✗ motorised boating, skiing or jet skiing
 - ✗ swimming, scuba diving or snorkelling
 - ✗ taking off or landing of aircraft (including amphibious aircraft)
- visiting outside of 6am-6pm

In an emergency call 000 or 112 in poor reception areas



RECREATION REVIEW UPDATE

A change to opening hours is being considered for all Seqwater lakes. Any changes will be announced towards the end of 2014. Progress updates are available at seqwater.com.au/recreview.



Always be DAM smart when you're visiting Lake Clarendon to ensure that everyone has a fun and safe day.

- Follow instructions around fire safety - if you see a fire call 000 or 112
- Be aware of local fauna, such as snakes, and carry a first aid kit
- Lock your vehicle and don't leave valuables unattended
- Respect other visitors and be mindful of noise and other nuisances
- Exercise caution as water levels are subject to change

Please respect our neighbours

Some of the land close to the lake is private property. If a Seqwater sign is not displayed, that means the area is not a designated recreation area and you must not enter.



Lake Clarendon Opening Hours

Access to all Seqwater sites, including on-water access, is only permitted between 6am – 6pm. The only exception is camping at a designated campground or if a permit expressly provides permission.

Before you visit

Check the public notices section on our website for the latest information on access, closures and conditions before you visit any of our recreational areas.

For any other enquiries contact us at **recreation@seqwater.com.au** or **seqwater.com.au**